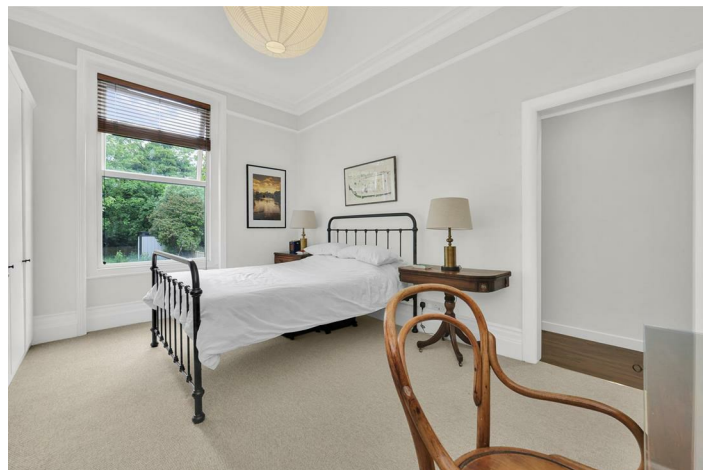




Winchester Avenue, NW6 TO LET - £2,500 Per Month

Available to let is this bright and airy one bedroom Ground Floor Flat, set within a Victorian conversion, situated on a pretty tree-lined street, Winchester Avenue.

- A charming 1 bedroom, 1 bathroom Ground Floor Flat
- Bright bay fronted reception with feature fireplace
- Separate modern fitted kitchen
- Spacious bedroom with plenty of storage space
- High ceilings & plenty of natural light
- Transport: Brondesbury Park (Overground-Zone 2)
- Council: Brent (C)
- Deposit: £2,884
- Viewing is highly recommended

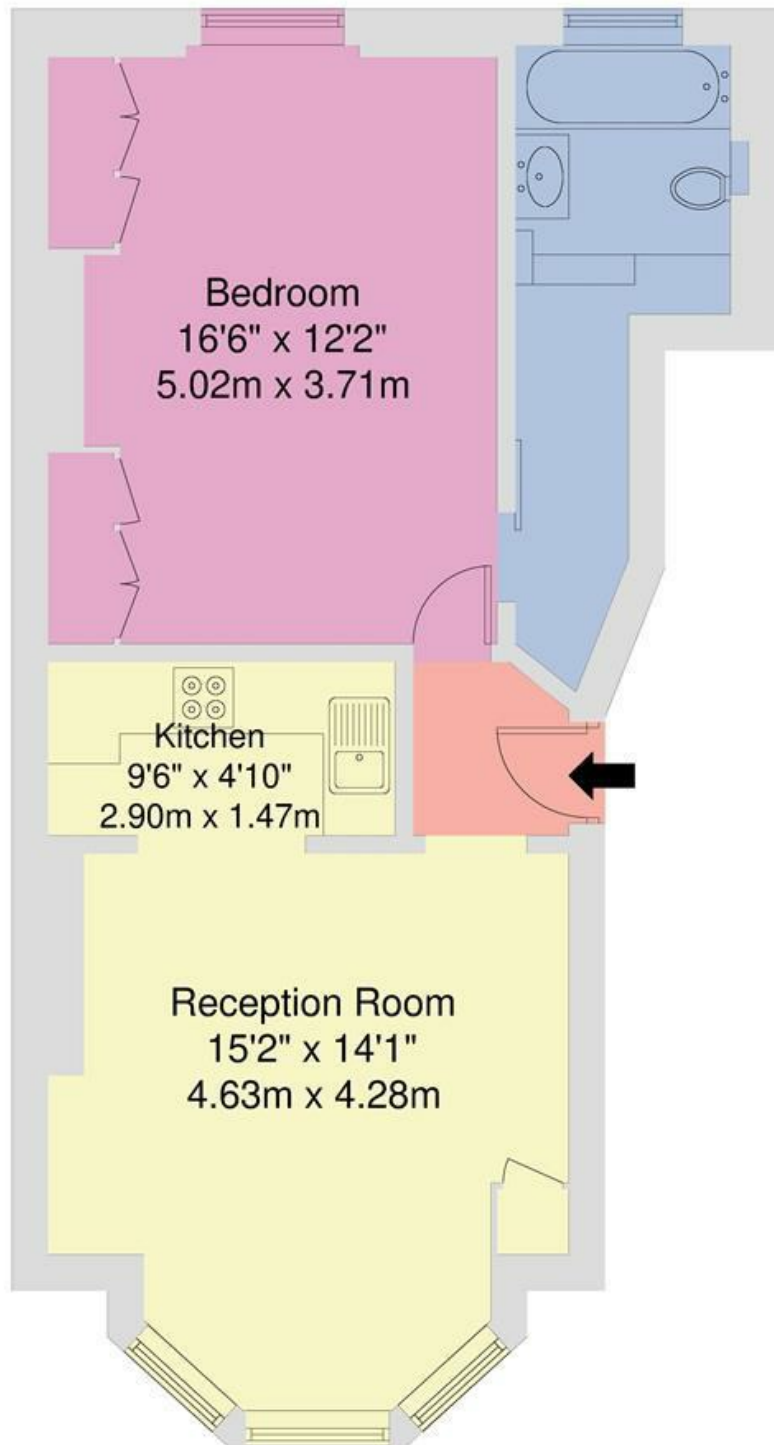


020 8450 9377
rentals@cameronsstiff.co.uk
cameronsstiff.co.uk

Winchester Avenue, NW6

Approximate Area = 51.8 sq m / 557 sq ft

For Identification only - Not to Scale



RAISED GROUND FLOOR

Disclaimer: Floorplan produced in accordance with RICS guidelines. While we do not doubt the floorplan accuracy and completeness, you or your advisors should conduct a careful, independent investigation of the property in respect of monetary valuation. Produced for Camerons Stiff & Co.

EPC: C

Ref: 18536107

