



6 The Forge, Braidpark Drive, Giffnock, G46 6LB
www.nicolestateagents.co.uk



Nicol Estate Agents





Nicol Estate Agents

Situation

The Forge, just off Braidpark Drive, is conveniently located for access to Lidl, Morrison's and Sainsbury's on Fenwick Road as well as The Avenue Shopping Centre and Waitrose at Greenlaw Village Retail Park.

Giffnock is acknowledged for its standard of local amenities and provides a selection of local shops, supermarkets, restaurants, regular bus and rail services to Glasgow City Centre, banks, library and health care facilities. Local sports and recreational facilities include Parklands Country Club, Cathcart, Williamwood and Whitecraigs Golf Clubs, several private bowling and tennis clubs, Rouken Glen Park, as well as East Renfrewshire Council's own excellent sports and leisure facilities at Eastwood Toll.

This popular suburb is located approximately 8 miles to the South of Glasgow's City Centre and is conveniently situated for commuter access to nearby M77/M8 & Glasgow Southern Orbital. Giffnock is considered one of the primary residential suburbs on the south side of Glasgow. The Sunday Times newspaper has voted Giffnock in the top 100 places to live within the UK.









Nicol Estate Agents

Property Description

Well presented ground floor retirement flat, set within this popular and convenient small retirement development, just a short distance from public transport, local shops, post office and health surgeries on Fenwick Road.

The accommodation comprises:

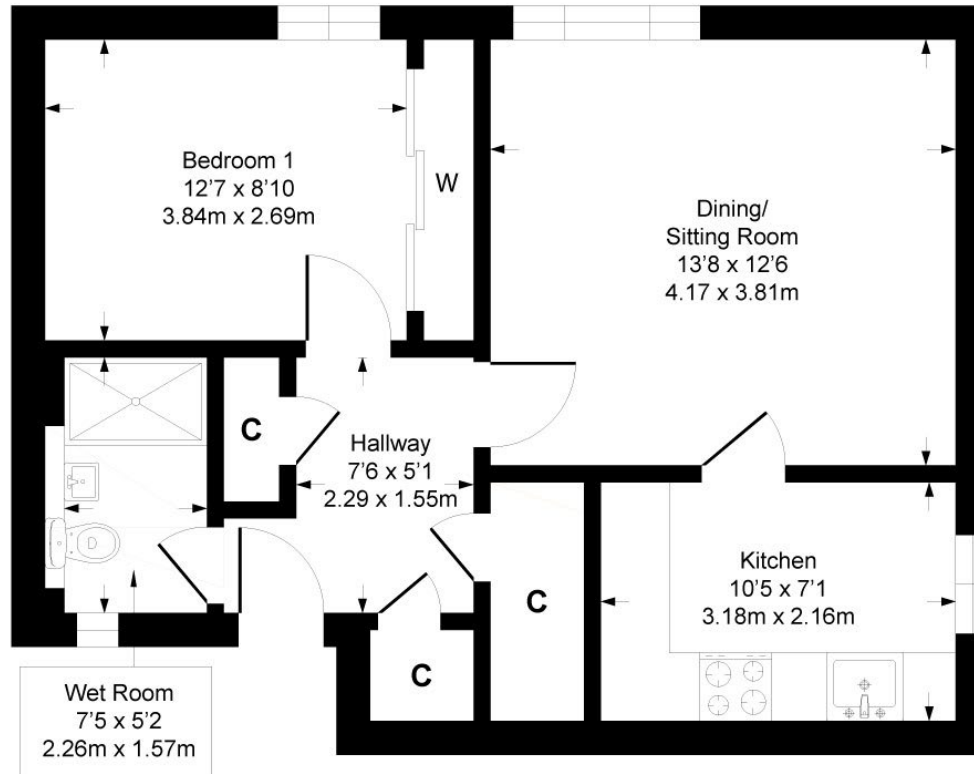
Controlled door entry security system to well maintained communal hall. Reception hall with ample storage. Spacious sitting room overlooking the garden grounds. Modern kitchen, fitted with a range of wall mounted and floor standing units. Double bedroom with fitted wardrobes. A wet room, completes the accommodation.

The property benefits from gas central heating, newly installed double glazing, a secure entry system, well kept landscaped communal garden grounds and private resident's parking facilities. There is also a communal residents' lounge located within development.



6 The Forge Giffnock, Braidpark Drive, Giffnock

Approximate Gross Internal Area = 505 sq ft - 46.8 sq m



SKETCH PLAN FOR ILLUSTRATIVE PURPOSES ONLY All measurements, walls, doors, windows, fitting and appliances, their sizes and locations are approximate only. They cannot be regarded as being a representation by the seller, nor their agent. We believe these details to be accurate however it is not guaranteed and they do not form any part of a contract. Fixtures and fittings are not included unless specified in the enclosed. Photographs are for general information and it must not be inferred that any item is included for sale with the property.



Nicol Estate Agents

Viewing

By appointment through
Nicol Estate Agents
Newton Mearns

Outgoings

East Renfrewshire Council
Band D

Fixtures & Fittings

Only items specifically mentioned in the sale particulars are included in the sale price.

Energy Efficiency Rating

Band tbc

Services

The property will be supplied by mains water, gas and electricity. Gas central heating.

Local Authority

East Renfrewshire Council
Council headquarters
Eastwood Park
Rouken Glen Road
Giffnock G46 6UG
Tel: (0141) 577 3000

Property Reference

CLA977

46 Ayr Road, Newton Mearns, Glasgow G46 6SA | 0141 616 3960 | fax 0141 258 2761 | mail@nicolestateagents.co.uk

1 Helena Place, Busby Road, Clarkston, G78 7RB | 0141 638 4541 | fax 0141 258 2761 | clarkston@nicolestateagents.co.uk



www.nicolestateagents.co.uk