





Kirkcroft Close, Thorpe Hesley, Rotherham, S61 2UH  
£320,000

3 2 2



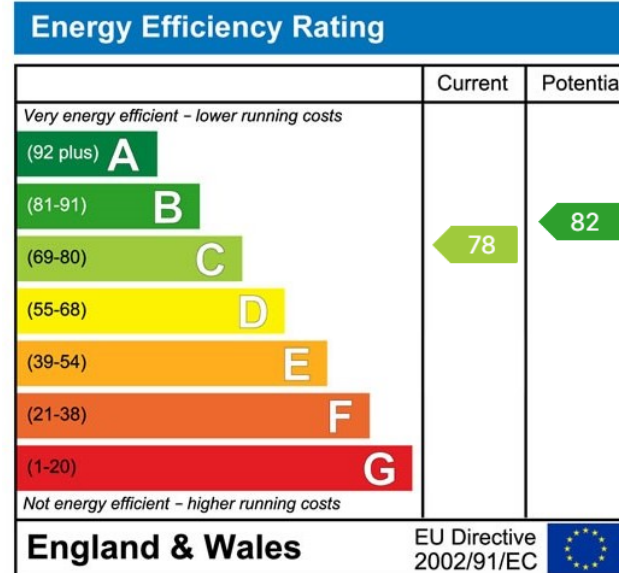
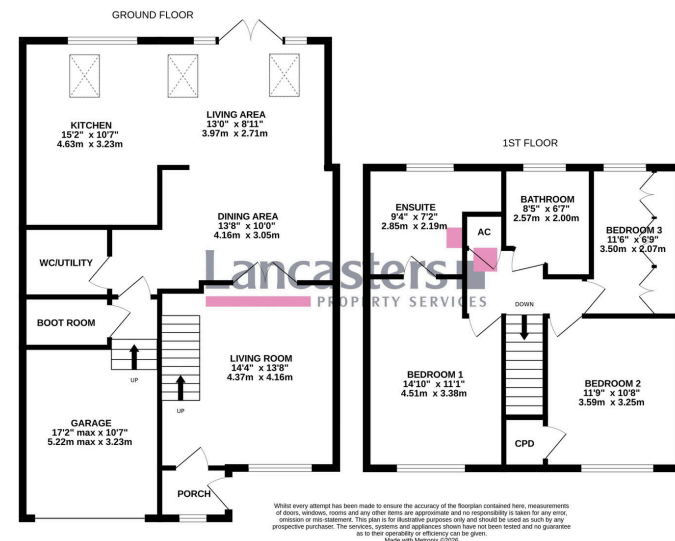


- AMAZING
- Spacious Accommodation
- Open Plan Living Kitchen
- Parking & Garage
- Local Services & Amenities
- Exceptional Throughout - Recently Modernised & Extended
- Southwest Facing Rear Gardens
- 3 Bedrooms & 2 Bathrooms
- Open Countryside on the Doorstep
- M1 access





Enjoying a delightful village location, a recently modernised, and extended home, presented to an exceptional standard throughout, offering accommodation on a much greater scale than its first appearance might suggest, incorporating an open pan living kitchen and enjoying southwest facing gardens.



**Lancasters Property Services**  
**Property Professionals For Over 230 Years**  
 Independent Estate Agents, Surveyors & Property Management  
**Email:** mail@lancasters-property.co.uk  
 In association with Lancasters Property Management Ltd.

Lancaster House, 20 Market St.  
**Penistone** S36 6BZ  
**Tel:** (01226) 763307