



**Connells**

Haynes Road  
Bedford



## Property Description

\*\*\*POPULAR SOUTH BEDFORD LOCATION\*\*\*

\*\*\*ATTENTION FIRST TIME BUYERS & INVESTORS!\*\*\*

Exclusively available to Connells is this 3 bedroom mid terraced town-house located on the popular south side of Bedford that is spread across 3 floors. Internally the property comprises of entrance hall, cloakroom, lounge, kitchen/diner, 3 bedrooms, ensuite to master bedroom, family bathroom and access to the internal garage.

Externally the property benefits a lovely enclosed rear garden, garage and off road parking.

### Location:

South Bedford provides the perfect balance for family living. Set a short distance from the A421 and only minutes away from the M1 Motorway and other key transport links including the A1. Other benefits include a short distance to shops, superstore and other local amenities including community centre & schooling.

## Ground Floor

### Entrance Hall

### Cloakroom

### Kitchen/Diner

14' 11" x 9' 1" ( 4.55m x 2.77m )

## First Floor

### Lounge

15' x 10' ( 4.57m x 3.05m )

### Bedroom Two

10' x 6' 6" plus door recess ( 3.05m x 1.98m plus door recess )

### Bedroom Three/Study

8' 2" x 6' 8" ( 2.49m x 2.03m )

## Bathroom

## Second Floor

### Master Bedroom

15' 4" x 11' 11" Max, plus wardrobes ( 4.67m x 3.63m Max, plus wardrobes )

### Shower Room

## External

### Rear Garden

### Garage

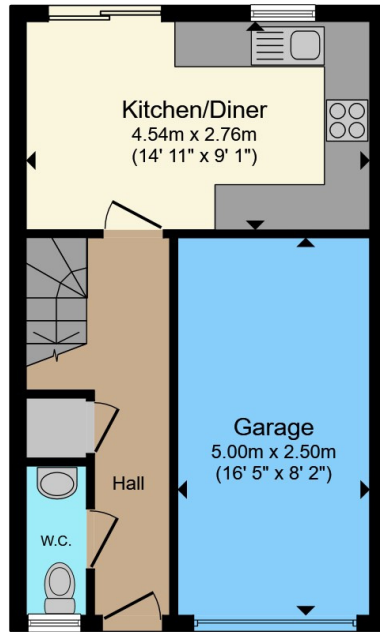
16' 5" x 8' 2" ( 5.00m x 2.49m )

### Parking

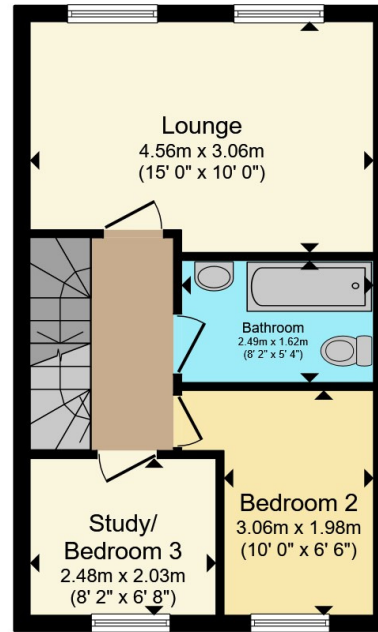




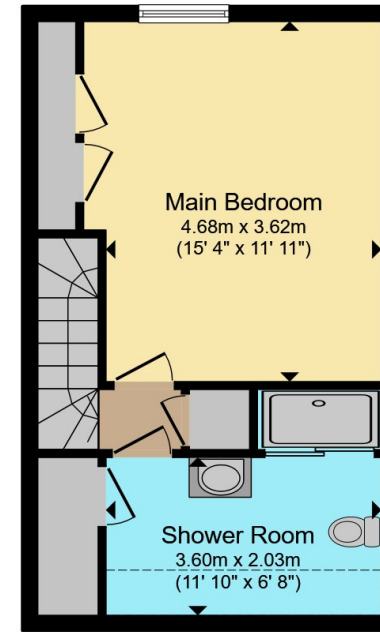




**Ground Floor**



**First Floor**



**Second Floor**

Total floor area 107.1 m<sup>2</sup> (1,152 sq.ft.) approx

This floor plan is for illustrative purposes only. It is not drawn to scale. Any measurements, floor areas (including any total floor area), openings and orientation are approximate. No details are guaranteed, they cannot be relied upon for any purpose and they do not form part of any agreement. No liability is taken for any error, omission or misstatement. A party must rely upon its own inspection(s). Powered by [www.propertybox.io](http://www.propertybox.io)

**Connells**

To view this property please contact Connells on

**T 01234 345 303**  
**E [bedford@connells.co.uk](mailto:bedford@connells.co.uk)**

42 Allhallows  
BEDFORD MK40 1LN

EPC Rating: C Council Tax  
Band: C

Tenure: Freehold

**view this property online [connells.co.uk/Property/BED312877](http://connells.co.uk/Property/BED312877)**



1. MONEY LAUNDERING REGULATIONS Intending purchasers will be asked to produce identification documentation at a later stage and we would ask for your co-operation in order that there will be no delay in agreeing the sale. 2. These particulars do not constitute part or all of an offer or contract. 3. The measurements indicated are supplied for guidance only and as such must be considered incorrect. Potential buyers are advised to recheck measurements before committing to any expense. 4. We have not tested any apparatus, equipment, fixtures, fittings or services and it is in the buyers interest to check the working condition of any appliances.

Connells Residential is registered in England and Wales under company number 1489613, Registered Office is Cumbria House, 16-20 Hockliffe Street, Leighton Buzzard, Bedfordshire, LU7 1GN. VAT Registration Number is 500 2481 05.

**See all our properties at [www.connells.co.uk](http://www.connells.co.uk) | [www.rightmove.co.uk](http://www.rightmove.co.uk) | [www.zoopla.co.uk](http://www.zoopla.co.uk)**

Property Ref: BED312877 - 0004