



## Shakespeare Crescent, £325,000

- Renovated throughout
- Spacious annex
- 3 Bedrooms
- Corner Plot
- Council tax C
- EPC Rating: D



 3  2  2



## About the property

This beautifully presented three-bedroom semi-detached home occupies a generous corner plot and has been comprehensively renovated throughout to an exceptional standard. Set back from the road, the property offers a wonderful sense of space both internally and externally, making it ideal for modern family living.

The standout feature is the extensive, fully landscaped garden, which is exceptionally large and thoughtfully designed to provide a mix of lawn, patio and entertaining areas. To the rear sits a substantial annex, offering excellent versatility—perfect for multi-generational living, a home office, guest accommodation or holiday let potential, subject to requirements.

Internally, the main residence is finished to a high specification throughout, with modern fittings, stylish décor and a layout that maximises natural light. All three bedrooms are well proportioned, while the renovated living spaces flow seamlessly and are ready to move straight into.

Offering space, flexibility and a high-quality finish, this unique property is a rare opportunity for those seeking a turn-key home with exceptional outdoor space and annex accommodation.



## Accommodation

### Living Room

14' 5" x 11' 2" ( 4.39m x 3.40m )

### Kitchen/Dining Room

21' 4" x 10' 2" ( 6.50m x 3.10m )

### Bathroom

11' 10" x 8' 6" ( 3.61m x 2.59m )

### Bedroom One

15' 9" x 9' 6" ( 4.80m x 2.90m )

### Bedroom Two

12' 2" x 11' 6" ( 3.71m x 3.51m )

### Bedroom Three

8' 10" x 7' 7" ( 2.69m x 2.31m )

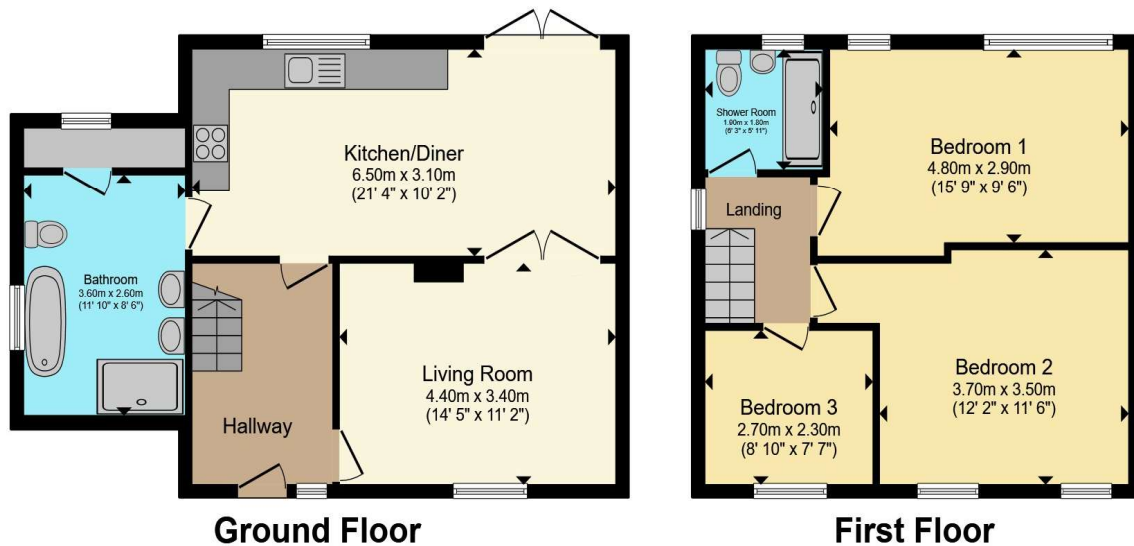
### Bathroom

6' 3" x 5' 11" ( 1.91m x 1.80m )

01633 221892

newport@peteralan.co.uk

## Floorplan



Total floor area 100.0 m<sup>2</sup> (1,076 sq.ft.) approx

This floor plan is for illustrative purposes only. It is not drawn to scale. Any measurements, floor areas (including any total floor area), openings and orientation are approximate. No details are guaranteed, they cannot be relied upon for any purpose and they do not form part of any agreement. No liability is taken for any error, omission or misstatement. A party must rely upon its own inspection(s). Powered by [www.propertybox.io](http://www.propertybox.io)



## Important Information

Note while we endeavour to make our sales details accurate and reliable, if there is any point which is of particular interest to you, please contact the office and we will be pleased to confirm the position for you. We have not personally tested any apparatus, equipment, fixtures, fittings or services and cannot verify they are in working order or fit for their purposes. Nothing in these particulars is intended to indicate that carpets or curtains, furnishings or fittings, electrical goods (whether wired or not). Gas fires or light fittings or any other fixtures not expressly included form part of the property offered for sale. This computer generated Floorplan, if applicable, is intended as a general guide to the layout and design of the property. It is not to scale and should not be relied upon for dimensions. Tenure: We cannot confirm the tenure of the property as we have not had access to the legal documents. The buyer is advised to obtain verification from their solicitor or surveyor.

Peter Alan Limited is registered in England and Wales under company number 2073153, Registered Office is Cumbria House, 16-20 Hockliffe Street, Leighton Buzzard, Bedfordshire, LU7 1GN. VAT Registration Number is 500 2481 05. For activities relating to regulated mortgages and non-investment insurance contracts, Peter Alan Limited is an appointed representative of Connells Limited which is authorised and regulated by the Financial Conduct Authority. Connells Limited's Financial Services Register number is 302221. Most buy-to-let

