



LANCASTER PARK

Richmond TW10



STYLISH VICTORIAN HOME

Stylish Victorian home in Lancaster Park with over 3,000 sq ft of living space, blending character features, contemporary design, and natural light, set over three elegant floors with landscaped garden.



4



2



3

EPC

C



Local Authority: London Borough of Richmond Upon Thames

Council Tax band: H

Tenure: Freehold

Guide Price: £3,500,000



EXQUISITE PERIOD FEATURES

The house is immediately impressive from the outside, with its handsome red-brick façade, bay windows, and ornate stonework, all set behind a neat front garden with off-street parking.

Inside, the formal sitting room to the front showcases exquisite period features including intricate ceiling cornicing, a striking fireplace, and a large bay window that bathes the room in daylight - an inviting space for entertaining or quiet relaxation.







STUNNING OPEN PLAN KITCHEN & MODERN LIVING SPACE

To the rear, the heart of the home is a stunning open-plan kitchen, dining, and family room, designed with modern living in mind. A dramatic glass roof and full-width sliding doors create a seamless connection to the landscaped garden, filling the entire space with natural light and offering a wonderful setting for indoor-outdoor living.

The first floor is dedicated to a luxurious principal suite with a generous bedroom, a practical dressing room, and a large en-suite bathroom. A study and utility room add to the practicality of the layout. The second floor offers two further well-proportioned bedrooms, a shower room, and unique to the house an extra open seating area which would make an ideal children's lounge or study space. An impressive, bespoke made library has been added to the half landing utilizing all additional space.

The front and rear gardens have been designed to work together to complement the house and living space. It was thoughtfully designed by RHS Chelsea Flower Show Gold Medal Winner, Sallis Chandler, and has mature planting, lawn and terrace which is perfect for outdoor entertaining.



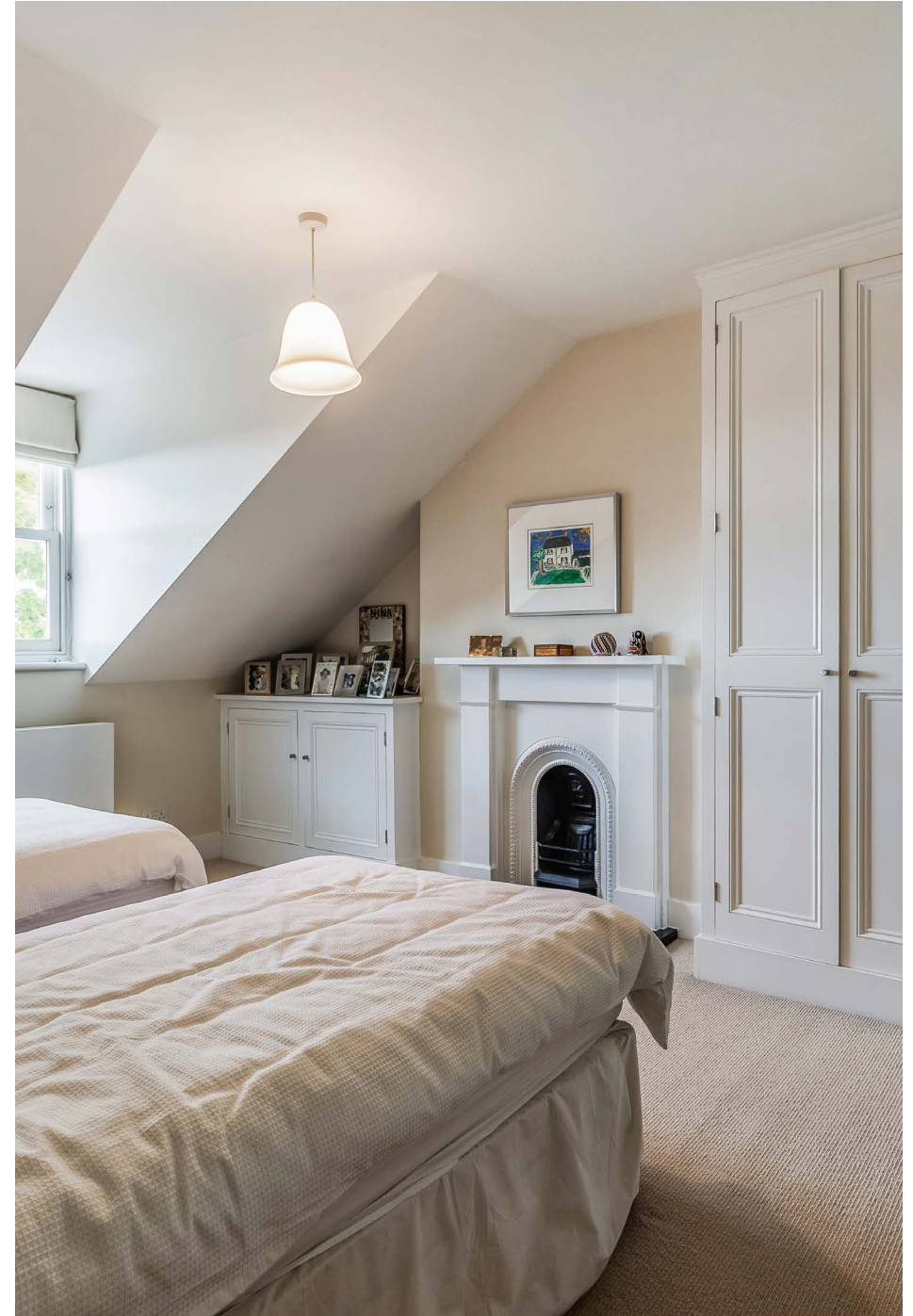
LOCATION

Lancaster Park is a very sought after location on the lower slopes of Richmond Hill within reach of the vibrant and excellent facilities of Richmond Town, including bars, restaurants, shops. Lancaster Park has a reputation of having a strong community and family spirit. The 2,500 acres of Richmond Park are also within reach as is the River and its towpath.

The Richmond Borough is renowned for the first-class schooling opportunities locally and many of these are also within walking distance. Schools include The Vineyard School, King's House School, Thomas', Marshgate Primary School and Rainbow Nursery School.

Richmond Station provides a quick link into central London via both Underground (District Line) and overground (Waterloo 19 minutes) and Heathrow is approximately 7.6 miles away.

*All times and distances are approximate.









Approximate Gross Internal Area = 283.2 sq m / 3048 sq ft

This plan is for layout guidance only. Not drawn to scale unless stated. Windows and door openings are approximate. Whilst every care is taken in the preparation of this plan, please check all dimensions, shapes and compass bearings before making any decisions reliant upon them. (ID767266)

We would be delighted
to tell you more.

Edward Adler
020 8939 2802
edward.adler@knightfrank.com

Knight Frank Richmond
23 Hill Street
Richmond TW9 1SX

[knightfrank.co.uk](https://www.knightfrank.co.uk)

Your partners in property

1. Particulars: These particulars are not an offer or contract, nor part of one. You should not rely on statements given by Knight Frank in the particulars, by word of mouth or in writing ("information") as being factually accurate about the property, its condition or its value. Neither Knight Frank nor any joint agent has any authority to make any representations about the property, and accordingly any information given is entirely without responsibility on the part of Knight Frank. 2. Material Information: Please note that the material information is provided to Knight Frank by third parties and is provided here as a guide only. While Knight Frank has taken steps to verify this information, we advise you to confirm the details of any such material information prior to any offer being submitted. If we are informed of changes to this information by the seller or another third party, we will use reasonable endeavours to update this as soon as practical. 3. Photos, Videos etc: The photographs, property videos and virtual viewings etc. show only certain parts of the property as they appeared at the time they were taken. Areas, measurements and distances given are approximate only. 4. Regulations etc: Any reference to alterations to, or use of, any part of the property does not mean that any necessary planning, building regulations or other consent has been obtained. A buyer must find out by inspection or in other ways that these matters have been properly dealt with and that all information is correct. 5. Fixtures and fittings: A list of the fitted carpets, curtains, light fittings and other items fixed to the property which are included in the sale (or may be available by separate negotiation) will be provided by the Seller's Solicitors. 6. VAT: The VAT position relating to the property may change without notice. 7. To find out how we process Personal Data, please refer to our Group Privacy Statement and other notices at <https://www.knightfrank.com/legals/privacy-statement>.

Particulars dated September 2025 Photographs and videos dated September 2025. All information is correct at the time of going to print. Knight Frank is the trading name of Knight Frank LLP. Knight Frank LLP is a limited liability partnership registered in England and Wales with registered number OC305934. Our registered office is at 55 Baker Street, London W1U 8AN. We use the term 'partner' to refer to a member of Knight Frank LLP, or an employee or consultant. A list of members names of Knight Frank LLP may be inspected at our registered office. If you do not want us to contact you further about our services then please contact us by either calling 020 3544 0692, email to marketing.help@knightfrank.com or post to our UK Residential Marketing Manager at our registered office (above) providing your name and address.