



Fredericks Row, EC1V

£7,000 Per calendar month

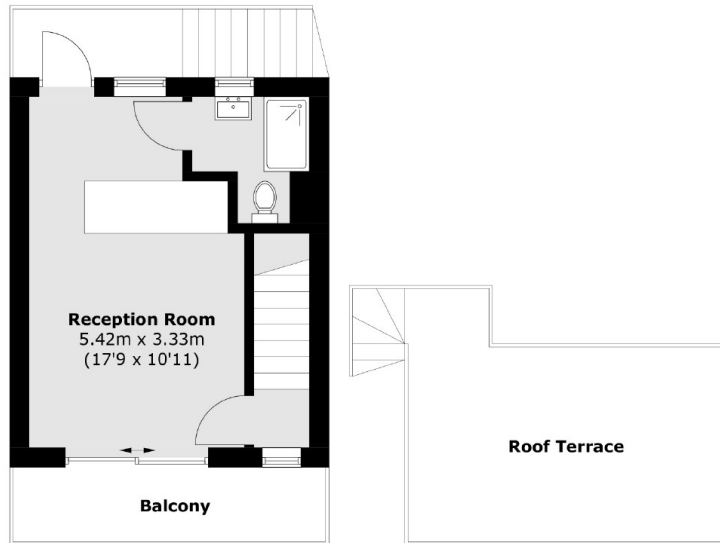
Sharers Welcome - A rare mews house with five double bedrooms, six bathrooms, large living room with access to a private balcony and a roof terrace. The house is distributed over three floors with each of the bedrooms having access to an ensuite.

The property is optimally located between Angel and Clerkenwell which is well know for its high street amenities, restaurants and supermarkets. Transport links include Angel, Farringdon and numerous bus routes giving easy access into the City and the West End

Features

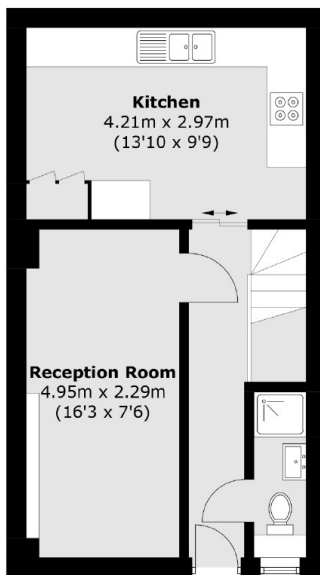
- Five Bedrooms
- Six Bathrooms
- Mews House
- Private Roof Terrace
- Sharers Welcome
- Equal Size Bedrooms

Fredericks Row, London, EC1V

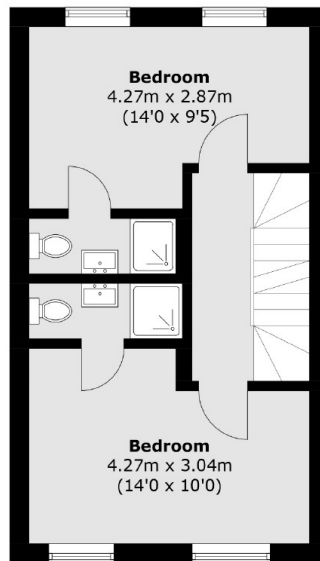


Third Floor

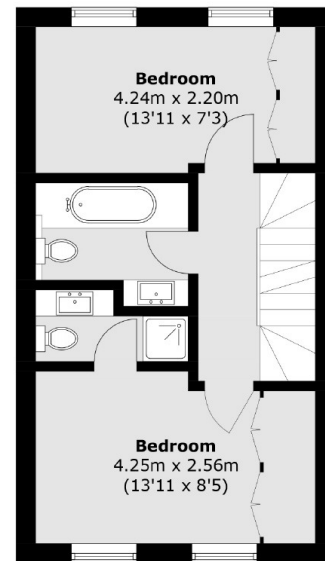
Fourth Floor



Ground Floor



First Floor



Second Floor

Total area (approx.): 127.2 sq. m (1369.1 sq. ft)
Balcony / Roof Terrace (approx.): 27.2 sq. m (292.8 sq. ft)