

**MANOR**

67 VOSS STREET  
LONDON | E2 6HP



A spacious two bedroom town house, arranged over the ground and first floors, a bright reception room with open plan kitchen and two generously sized bedrooms. Bathroom and additional WC.

Ideally located and tucked away moments from a wealth of amenities found along Bethnal Green Road and a large park area for walks and outdoor gyms just behind.

Voss Street boasts excellent transport links from nearby Bethnal Green stations.

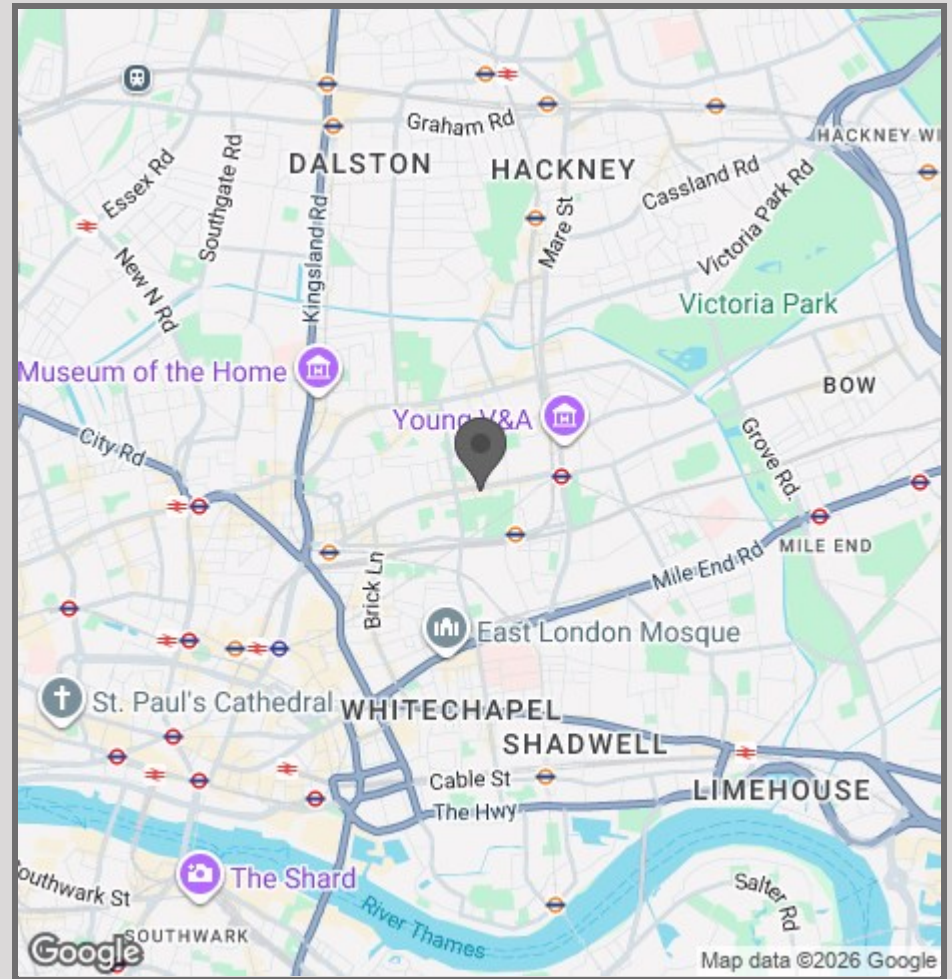












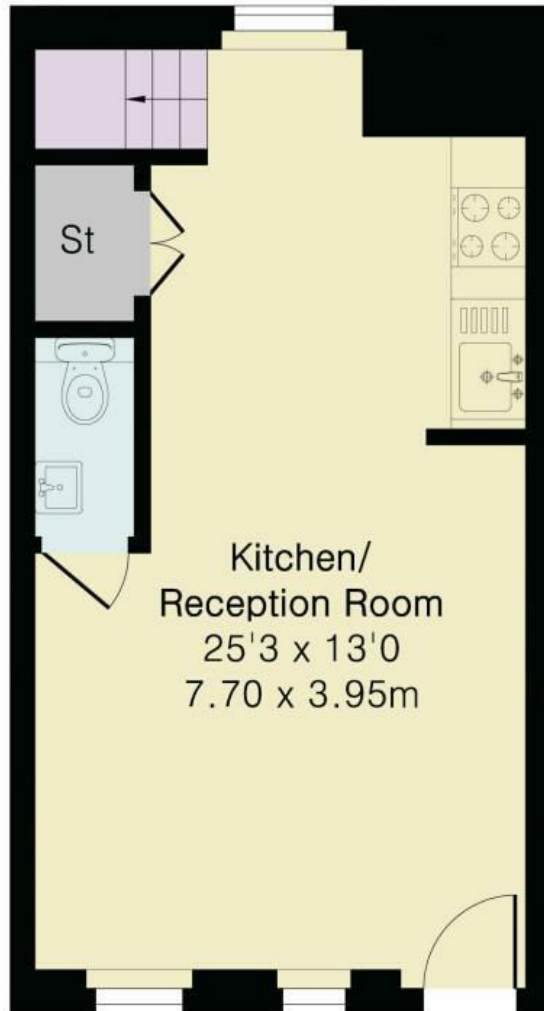
42 High Street  
Woodstock  
OX20 1TG  
01865 955500  
hello@manoroxford.com  
www.manoroxford.com

MANOR

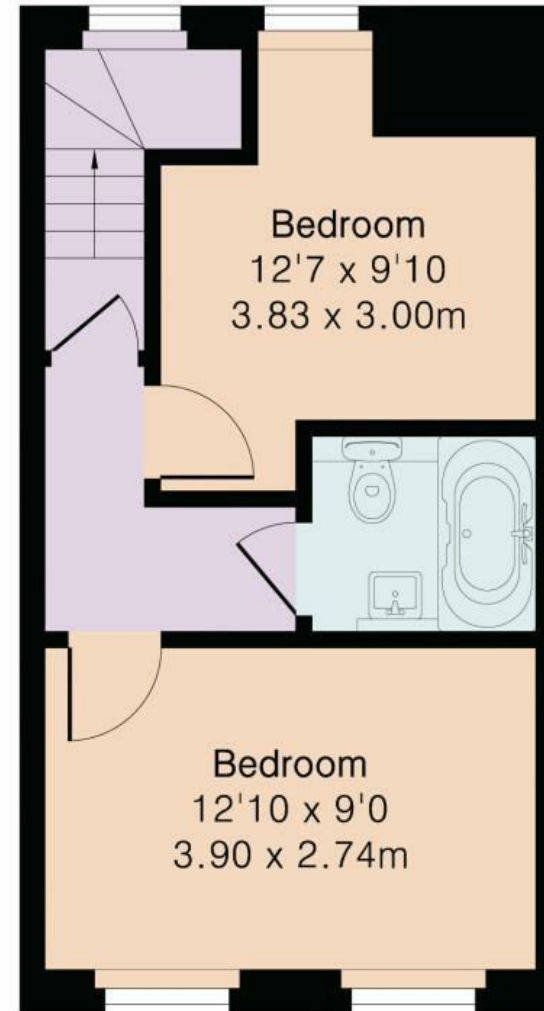
**Approximate Gross Internal Area 654 sq ft - 60 sq m**

Ground Floor Area 327 sq ft – 30 sq m

First Floor Area 327 sq ft – 30 sq m



Ground Floor



First Floor



**MANOR**