

# Apartment 33, £350,000\*

(Other charges apply)

RICHMOND  
VILLAGES

Part of Bupa



2



2



EPC - C



## 2 bedroom first floor apartment

A generous two bedroom, first floor independent living apartment offering expansive views across the bowling green at Richmond Villages Nantwich.

### Specification

- The stylish and bright living/dining room is well-proportioned, with French doors on to a Juliet balcony with views across the courtyard/bowling green.
- A modern, well-equipped, fitted high gloss kitchen with an integrated Bosch fridge freezer and slimline Neff dishwasher.
- The principal bedroom is a light and airy space with ample storage provided by floor-to-ceiling sliding fitted wardrobes.
- A beautifully full height tiled shower room.
- The second bedroom is generously sized and includes high gloss fitted wardrobes.
- A stylish WC with half height tiled walls and a white high gloss vanity unit with sink.
- An open hallway that provides access to all rooms via the stair lift and includes convenient storage for coats and shoes. Wooden flooring throughout.
- Central heating radiators in all rooms. TV and satellite points\*.
- Well stocked flower borders and lawns maintained by the Village Gardeners.
- Allocated parking space for one car.

\*Satellite subscription not included.

Important Notice: These particulars are intended to give a fair and substantially correct overall description. Other fees and charges apply, please contact the Village Advisers for further details. Properties are sold on a 125-year lease, this property has 112 years remaining.

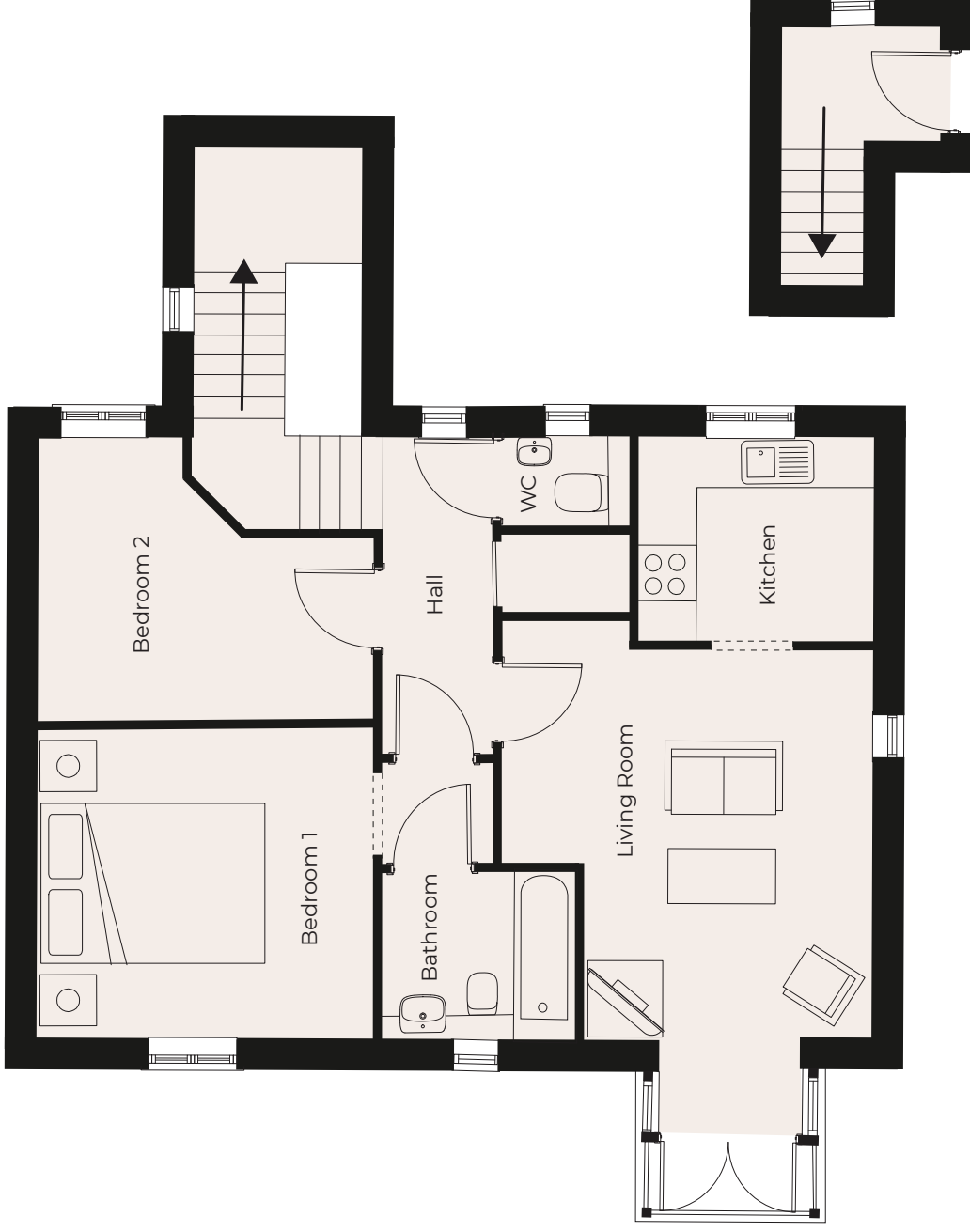
01270 629 080

[nantwich@richmond-villages.com](mailto:nantwich@richmond-villages.com)

Richmond Villages Nantwich,  
St Joseph's Way, Nantwich, Cheshire CW5 6LZ

# Apartment 33

First Floor | 706ft<sup>2</sup>



<b>Kitchen</b>	3022mm x 1829mm 9'11" x 6'
<b>Living Room</b>	4546mm x 3505mm 14'11" x 11'6"
<b>Bedroom 1</b>	4115mm x 3505mm 13'6" x 11'6"
<b>Bathroom</b>	2134mm x 1982mm 7' x 6'6"
<b>Bedroom 2</b>	3556mm x 2362mm 11'8" x 7'9"
<b>WC</b>	1422mm x 1016mm 4'8" x 3'4"

These particulars are intended to give a fair and substantially correct overall description.

Measurements have been taken at 1500mm skimming height.

All dimensions are approximate. Bedroom measurements include the wardrobe if applicable. Room measurements include bay windows if applicable.

Furniture layout is to give an indicative impression. Although all efforts have been made to ensure its accuracy at time of print dimensions, fixtures, fittings, finishes and specifications are subject to change without notice.

The properties are sold unfurnished.

