



Let **UK** Home

1 Bedrooms

Flat

Located in London

£2,200 Per Month



info@letukhome.co.uk

<https://www.letukhome.co.uk/>

01795 358 886



581 North End Road London

HA9 0UT



Let UK Home are excited to offer this spectacular one bedroom apartment in No.10 Watkin Road, right in the heart of Wembley Park.

The flat comprises a spacious open kitchen with a stylishly attached dining area, a magnificent living room leading to a private balcony, one bright bedroom with built-in wardrobes and one modern bathroom. The living room is equipped with a four-seater warm-toned leather sofa, and the bedroom is furnished with a comfortable King Size Bed. Small appliances are also fully equipped: microwave, air fryer, refrigerator, oven, etc., allowing you to move in conveniently with just your suitcase!!

Located just moments from Wembley Park Station, this home provides exceptional transport links via the Jubilee and Metropolitan lines, offering fast connections to Central London. Wembley Park is also home to an array of boutique shops, restaurants, entertainment venues, and the iconic Wembley Stadium, placing everything you need right at your doorstep. The apartment is located on the north side of Wembley Stadium. Within walking distance, there are supermarkets such as Sainsbury's and Asda, as well as restaurants offering various cuisines. It is also within walking distance to Wembley Boxpark shopping center and the London Designer Shopping Outlet. There are many parks nearby, making them great places to relax and enjoy the weekends.

From Wembley Park Station, you can take the subway to reach the media and arts campus of the University of Westminster in Harrow. You can also quickly get to renowned higher education institutions such as London Business School, Westminster Business School, University College London, and Central Saint Martins.

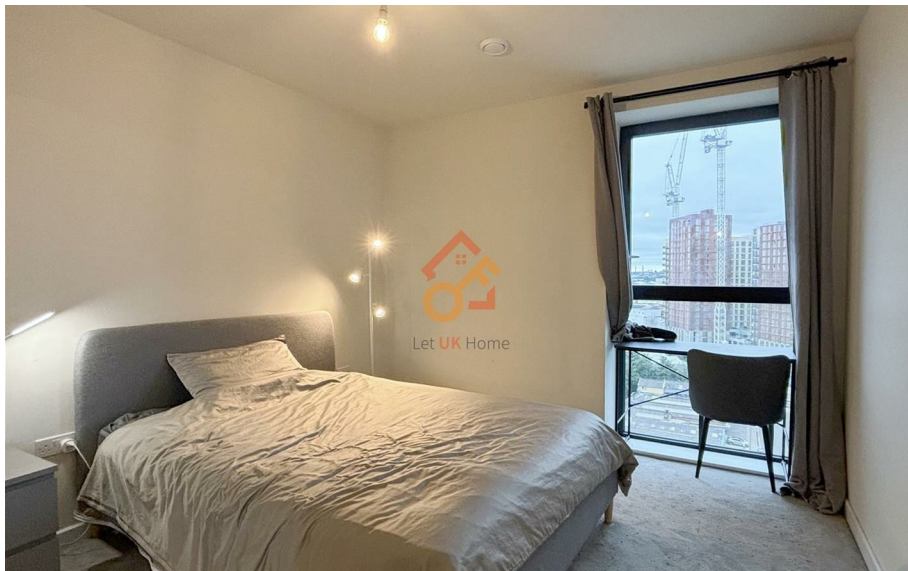
581 North End Road London

£2,200 Per Month

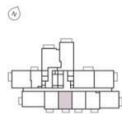


- 12th Floor
- Private Balcony
- Fully Furnished
- Close to transport links

- Rooftop Terrace
- EPC Rating: B
- Close to local shops



No.10 Watkin Road, Wembley
1 bedroom
apartment



Floor	Plot
23	
22	
21	
20	
19	206
18	198
17	186
16	174
15	162
14	150
13	138
12	126
11	114
10	102
9	90
8	78
7	66
6	54
5	
4	
3	
2	
1	
G	

PLOTS 54, 66, 78, 90, 102, 114,
126, 138, 150, 162, 174, 186,
198, 206

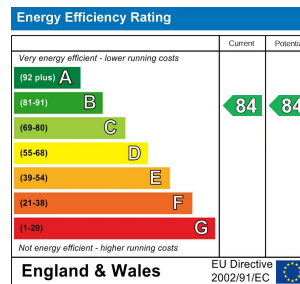
Kitchen/Living/Dining
25'1" x 10'1" (7660 x 3072mm)

Bedroom
12'3" x 10'2" (3722 x 3108mm)

Bathroom
7'0" x 6'7" (2150 x 2050mm)

TOTAL AREA
538 sq ft (50 sq m)

Balcony
11'1" x 5'4" (3380 x 1650mm)



Let **UK** Home

3F 2 Eastbourne Terrace
Paddington
London
W2 6LG

01795 358 886

info@letukhome.co.uk

Council Tax Band: C

Local Authority:

Agents Note: Whilst every care has been taken to prepare these particulars, they are for guidance purposes only. All measurements are approximate and are for general guidance purposes only and whilst every care has been taken to ensure their accuracy, they should not be relied upon and potential buyers/tenants are advised to recheck the measurements.

<https://www.letukhome.co.uk/>