



Broughton Avenue, TW10

£2,800 Per calendar month

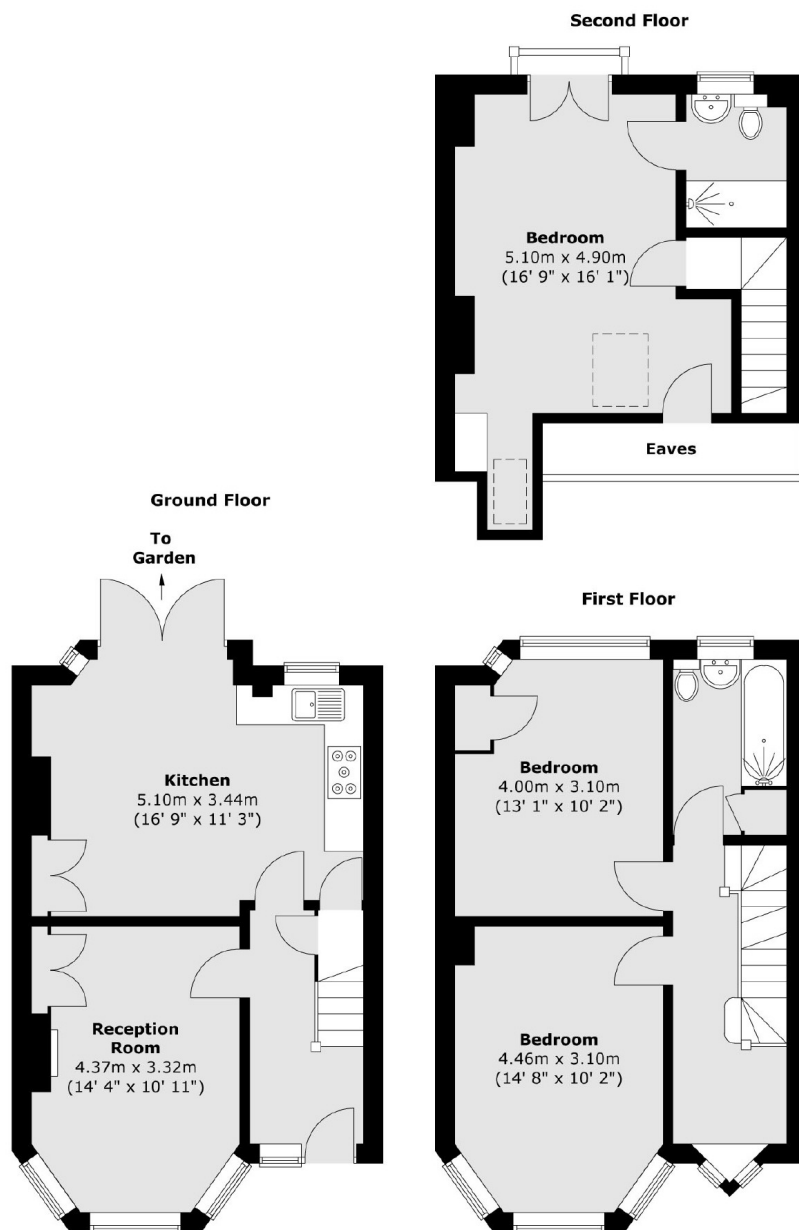
This three bedroom 1930's house is situated on a charming residential road, close to the open space of Ham Common and offers a modern kitchen/ dining area, a front and rear garden and two bathrooms.

If it's green open spaces you love then this location will not disappoint with Ham Common, Richmond Park, Petersham Meadows and the River Thames on your doorstep. Families are also well catered for with the German School, Grey Court School and Meadlands Primary School. Teddington Lock provides easy access to Teddington High Street with Richmond and Kingston readily accessible via bus.

Features

- Three Bedrooms
- Modern Kitchen
- Garage
- Front And Rear Garden
- Close To Excellent Schools
- Ham Common

Broughton Avenue, Richmond, TW10



Total area (approx.) : 107.3 sq. m (1155 sq. ft)
(Excluding Eaves)