

## Cendal Crescent, E1

£125,000

 1  1  1  B

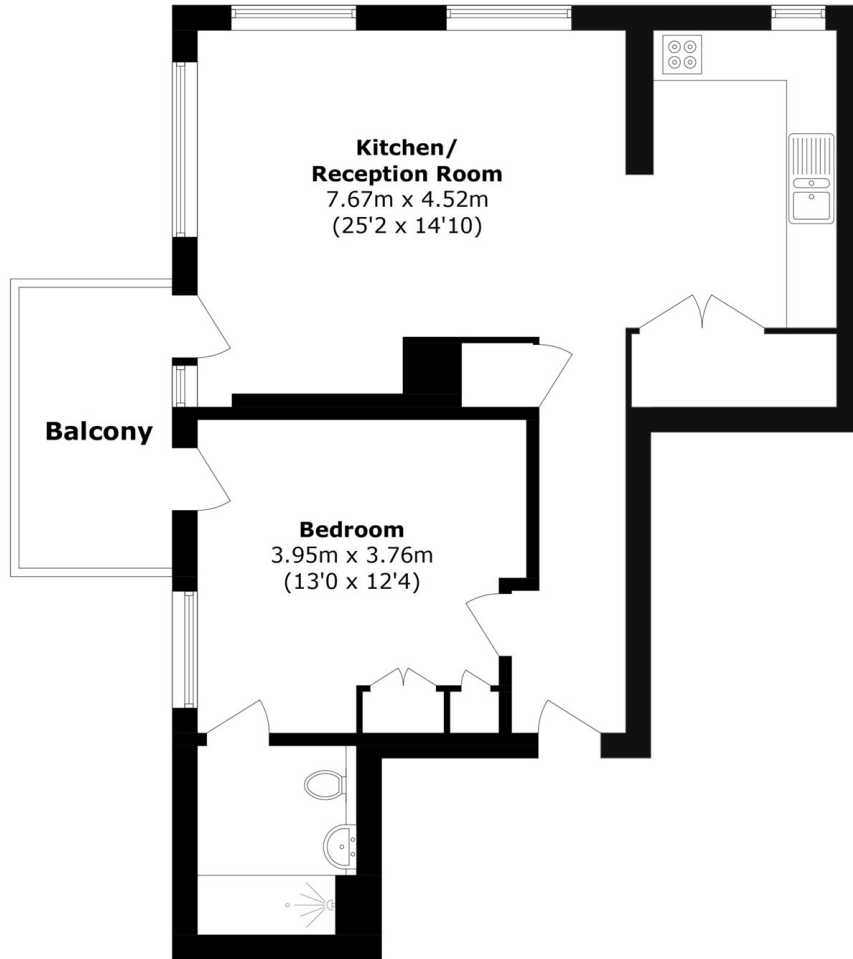
- 25% Shared Ownership
- Modern Throughout
- Large One Bedroom
- Resident Facilities
- 24 Hour Concierge
- Private Balcony



We're delighted to offer this modern first floor one bedroom home to the market in the sought after development, Bouchon Point. Features to include a private balcony, open planned reception room, concierge service, resident facilities including a gym and cinema and offered on a chain free basis.

Bouchon Point is centrally located and offers amazing walks around the City from the development. Bouchon Point is also just 0.3 miles from Whitechapel Station.





Total Area (approx.): 59.3 sq. m (638.3 sq. ft)  
Balcony area (approx.): 6.2 sq. m (66.7 sq. ft)

35A Wapping High Street,  
London, E1W 1NR  
020 7665 5589  
ea2group.com