

DAWSONS

Property Professionals since 1925

18/20 STAMFORD STREET STALYBRIDGE CHESHIRE TEL: 0161 338 2292

Website: www.wcdawson.com Email: reception@wcdawson.com



Elm Tree Drive, Dukinfield, SK16 5HQ

Dawsons are pleased to bring to market this three bedroom semi-detached property, situated in a popular and convenient location within easy reach of all local amenities. The property is ideal for a growing family with three good sized bedrooms and schools close by. No vendor chain - viewing recommended

Offers In The Region Of £200,000



**CHARTERED SURVEYORS, ESTATE AGENTS
& PROPERTY MANAGEMENT SPECIALISTS**



Elm Tree Drive, Dukinfield, SK16 5HQ

- Three bedroom semi-detached property
- Gardens front & rear
- Good sized bedrooms
- Ideally suited to a growing family
- Popular Location
- No vendor chain

GROUND FLOOR

Hallway

uPVC double glazed window, uPVC double glazed door, gas central heating radiator, stairs leading to first floor, door leading to reception room.

Reception room

12' x 13' (3.66m x 3.96m)

uPVC double glazed windows, gas central heating radiator, door leading to kitchen.

Kitchen

10' x 10' (3.05m x 3.05m)

uPVC double glazed windows, fitted with a range of wall and base units with work surface over, tiled splashbacks, inset sink with draining board and mixer tap, plumbing for automatic washing machine, built in oven and electric hob, extractor fan, door leading to:

Rear Hallway

5' x 10' (1.52m x 3.05m)

uPVC door leading to rear garden.

FIRST FLOOR

Landing

Doors leading to:

Bedroom 1

8' x 15' (2.44m x 4.57m)

uPVC double glazed window, gas central heating radiator.

Bedroom 2

9' x 9' (2.74m x 2.74m)

uPVC double glazed window, gas central heating radiator.

Bedroom 3

6' x 11' (1.83m x 3.35m)

uPVC double glazed window, gas central heating radiator.

Bathroom

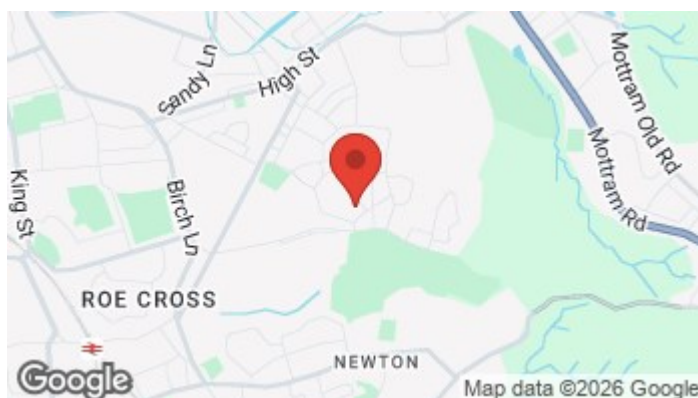
6' x 7' (1.83m x 2.13m)

uPVC double glazed window, wash hand basin, low level WC, panelled bath, shower, glass shower screen, hand rail, tiled walls.

Externally

Garden fronted with path and hand rail.

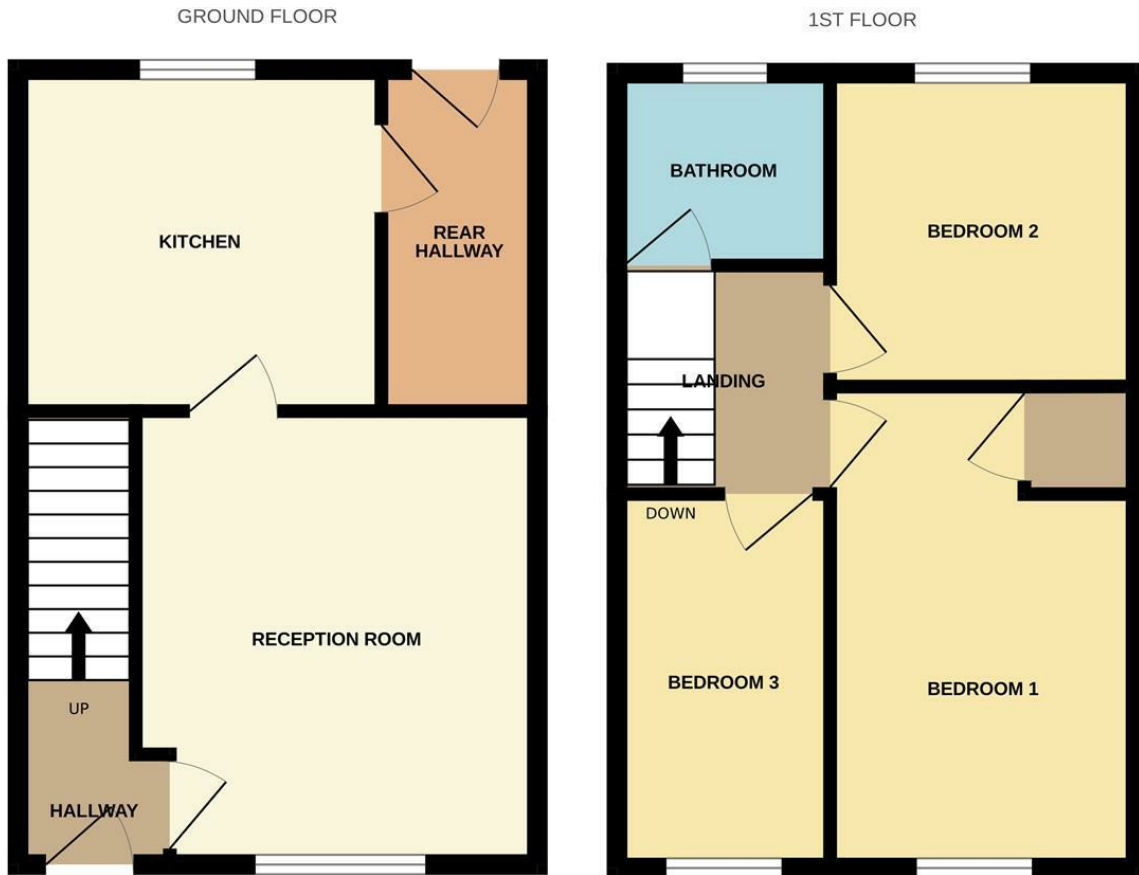
Rear garden with paved and lawn area.



Directions



Floor Plan



Whilst every attempt has been made to ensure the accuracy of the floorplan contained here, measurements of doors, windows, rooms and any other items are approximate and no responsibility is taken for any error, omission or mis-statement. This plan is for illustrative purposes only and should be used as such by any prospective purchaser. The services, systems and appliances shown have not been tested and no guarantee as to their operability or efficiency can be given.
Made with Metropix ©2026

These particulars, whilst believed to be accurate are set out as a general outline only for guidance and do not constitute any part of an offer or contract. Intending purchasers should not rely on them as statements of representation of fact, but must satisfy themselves by inspection or otherwise as to their accuracy. No person in this firm's employment has the authority to make or give any representation or warranty in respect of the property.

