



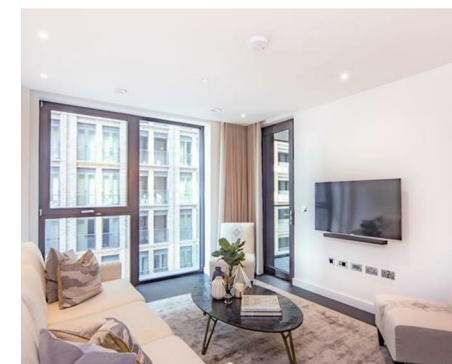
Let **UK** Home

**2 Bedrooms**

**Flat**

Located in London

**£4,788 Per Month**



[info@letukhome.co.uk](mailto:info@letukhome.co.uk)

<https://www.letukhome.co.uk/>

01795 358 886



# 4 Charles Clowes Walk London

SW11 7AG



Let UK Home are pleased to offer an impressive interior designed 902 Sq Ft two-bedroom, two-bathroom apartment located in Thornes House forming part of The Residence Collection in Nine Elms on London's iconic South Bank.

This luxury apartment is situated on the 2nd floor of this prestigious building which features a 24-hour manned concierge along with a dedicated building manager, lift service, gym, media room, board room and secure underground parking.

The apartment comprises a spacious reception room complete with Samsung Smart TV's with Bose sound bars incorporating a built in Amazon Alexa to control the apartments lighting, TV and heating systems along with a private balcony. The reception room is open plan with a fully fitted kitchen featuring integrated AEG appliances with floor to ceiling windows providing far reaching views across London. The apartment offers two double-bedrooms, two-bathrooms, one of which is an en-suite bathroom from the master bedroom. The apartment also benefits from ample storage space.

Thornes House is ideally positioned between two new Northern Line underground stations, adding to the extensive transport links including tree lined footpaths, dedicated cycle lanes, Clipper river service, local buses and the Pimlico bridge providing direct access into the neighbouring Royal Boroughs of Kensington and Chelsea.

# 4 Charles Clowes Walk London

£4,788 Per Month



- 2nd Floor
- Outside Space | Interior Designed | Private Balcony
- Underground Secure Parking | Bike Storage
- 24-Hour Emergency Helpline | Lift Service
- Video Entry
- EPC Rating: B
- On-site Gym | Cinema Media Room | Board Room
- 24-Hour Concierge Service | On-Site Building Manager | CCTV
- Flexible Rental Terms | Available Furnished & Unfurnished



Let **UK** Home

3F 2 Eastbourne Terrace  
 Paddington  
 London  
 W2 6LG

01795 358 886

info@letukhome.co.uk

**Council Tax Band: E**

**Local Authority:**

Agents Note: Whilst every care has been taken to prepare these particulars, they are for guidance purposes only. All measurements are approximate and are for general guidance purposes only and whilst every care has been taken to ensure their accuracy, they should not be relied upon and potential buyers/tenants are advised to recheck the measurements.

Energy Efficiency Rating		Current	Potential
<i>Very energy efficient - lower running costs</i>			
(92 plus) <b>A</b>			
(81-91) <b>B</b>		87	87
(69-80) <b>C</b>			
(55-68) <b>D</b>			
(39-54) <b>E</b>			
(21-38) <b>F</b>			
(1-20) <b>G</b>			
<i>Not energy efficient - higher running costs</i>			
<b>England &amp; Wales</b>	EU Directive 2002/91/EC		

<https://www.letukhome.co.uk/>