



19 Stoneham Close

Tilehurst, RG30 4HB

Guide price £375,000 Freehold



VP - NO ONWARD CHAIN. The property will remain available for viewings until Thursday 18th June, thereafter any interested parties will need to submit their best and final offer in writing by 10am on Friday 19th June 2026.

This three-bedroom semi-detached house presents an excellent opportunity for those looking to create their dream home. The accommodation comprises a living room and a versatile kitchen/dining room, this property offers ample space for family living and entertaining.

The ground floor features a convenient downstairs WC, enhancing the practicality of the layout. Ascending to the first floor, you will find a well-appointed bathroom, serving the three comfortable bedrooms, each offering a peaceful retreat.

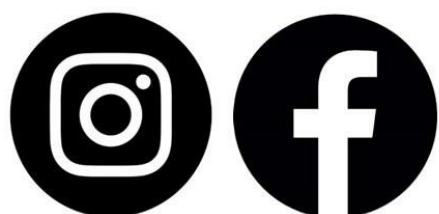
Externally, the property boasts off-road parking for up to three vehicles, along with a garage, ensuring that parking is never a concern. The circa 70ft rear garden is a delightful outdoor space, perfect for gardening enthusiasts or for children to play. Additionally, the side access gate provides easy entry to the garden, enhancing its usability.

It is important to note that the property will require internal renovation, allowing you the freedom to personalise and modernise the space to your taste. This semi-detached house is an ideal canvas for those with a vision, situated in a friendly neighbourhood with convenient access to local amenities, schools, parks and transport links.

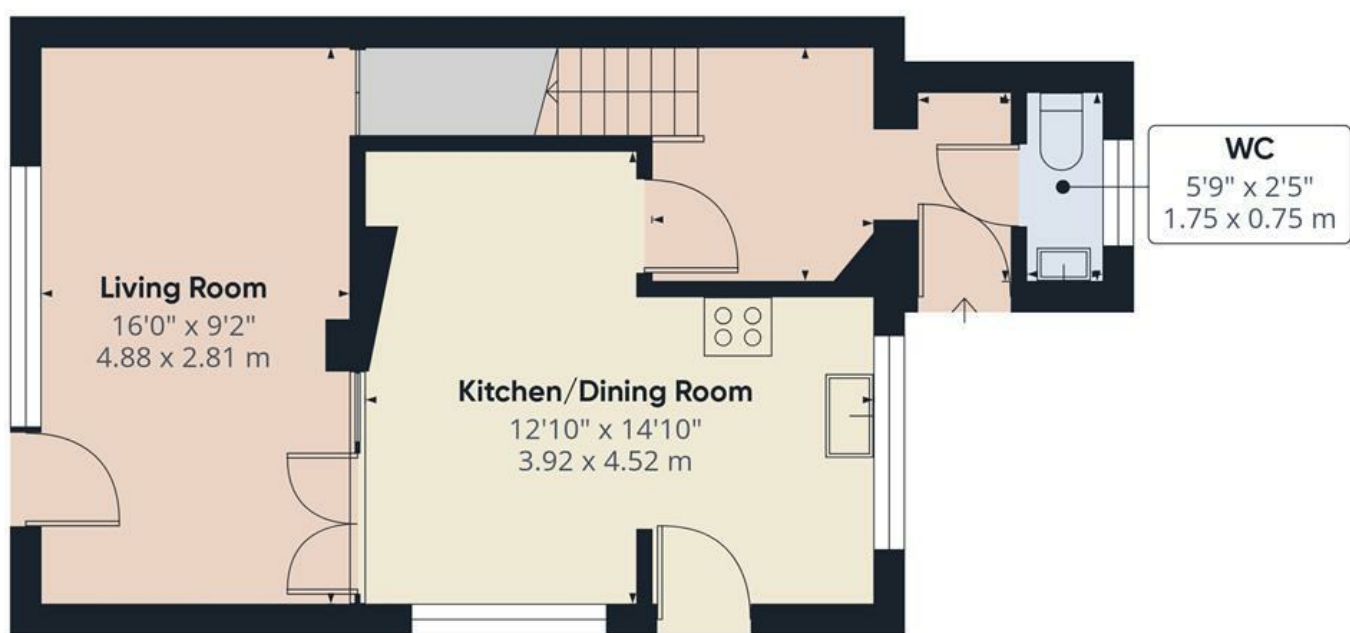
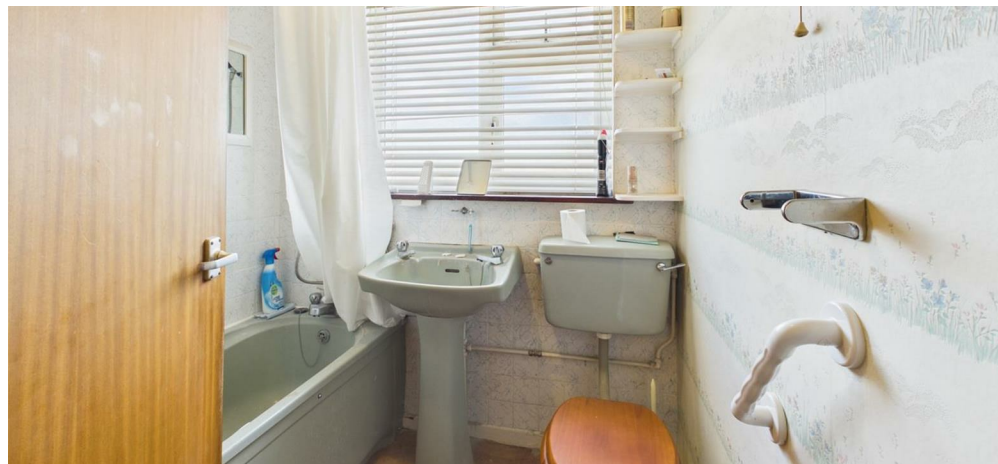
Council tax band -D

- NO ONWARD CHAIN
- THREE BEDROOMS
- SEMI DETACHED HOUSE
- OFF ROAD PARKING
- DETACHED GARAGE
- SIDE ACCESS GATE
- DOWNSTAIRS WC
- CLOSE TO SCHOOLS

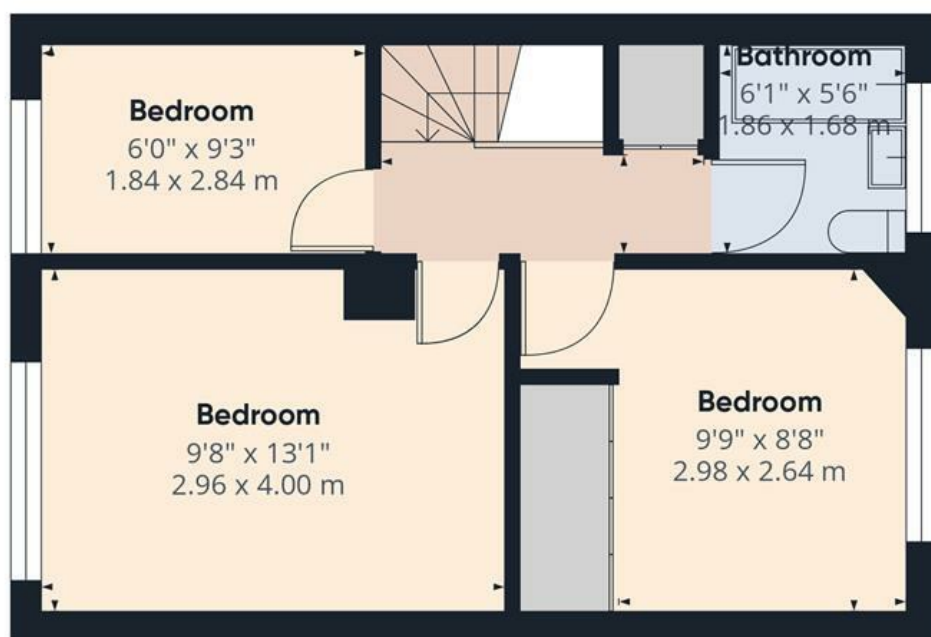
Get Social



VillageProperties.co.uk



Ground Floor



Floor 1



Approximate total area^m
781 ft²
72.6 m²

(1) Excluding balconies and terraces

Calculations reference the RICS IPMS 3C standard. Measurements are approximate and not to scale. This floor plan is intended for illustration only.

GIRAFFE360

