



Perrers Road, W6

£500,000

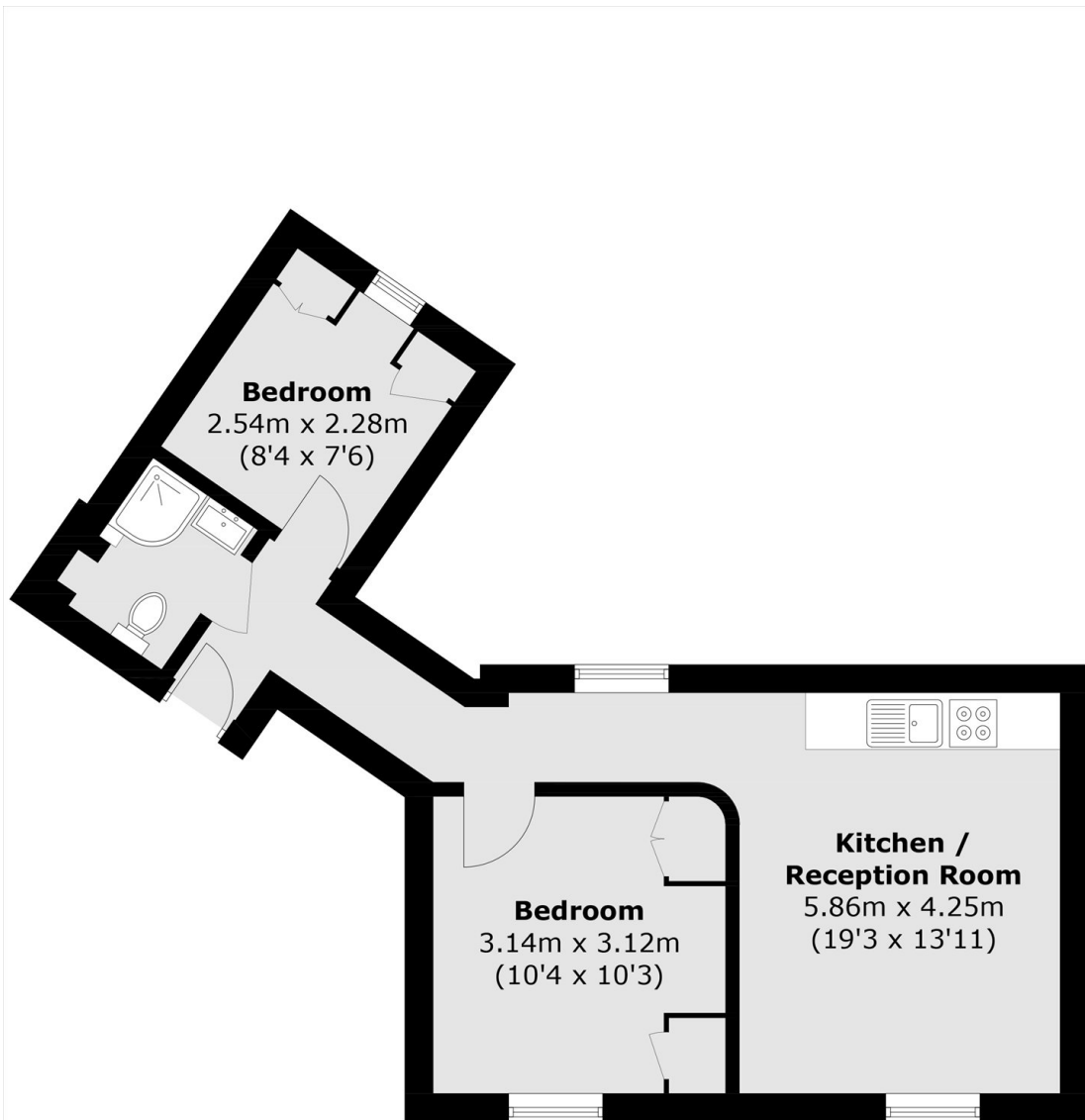
A wonderful two bedroom period conversion in the heart of Brackbury Village.

Situated in the heart of the popular Brackbury Village, the property is located close to the amenities of the village, as well as easy access to the green and open spaces of Ravenscourt Park and transport links and shopping facilities of both Hammersmith and Ravenscourt Park.

Features

Two Bedrooms
Share of Freehold
Period Conversion
Natural Light
Brackbury Village
No Chain

Perrers Road, London, W6



Total area (approx.): 40.2 sq. m (432.7 sq. ft)