



Wells Road

Emborough, BA3 4SA

£985,000

Vendors comments - "Hive Cottage was an old Post Office which dates back over 330 years old. Over the 30 years of ownership we have had pigs, goats, sheep, calves, chickens and ducks and as our family left home we reduced this down and now have fish in our 2 ponds. The house is very homely and spacious with many parties being held here over the years."

- Expansive family home
- Large gardens
- Abundance of parking
- Multiple outbuildings
- En-suite to all bedrooms
- 2 acre plot overall

Viewing

Please contact our Bath Stone Property (MSN) Office on 01761 360144

if you wish to arrange a viewing appointment for this property or require further information.



4



4

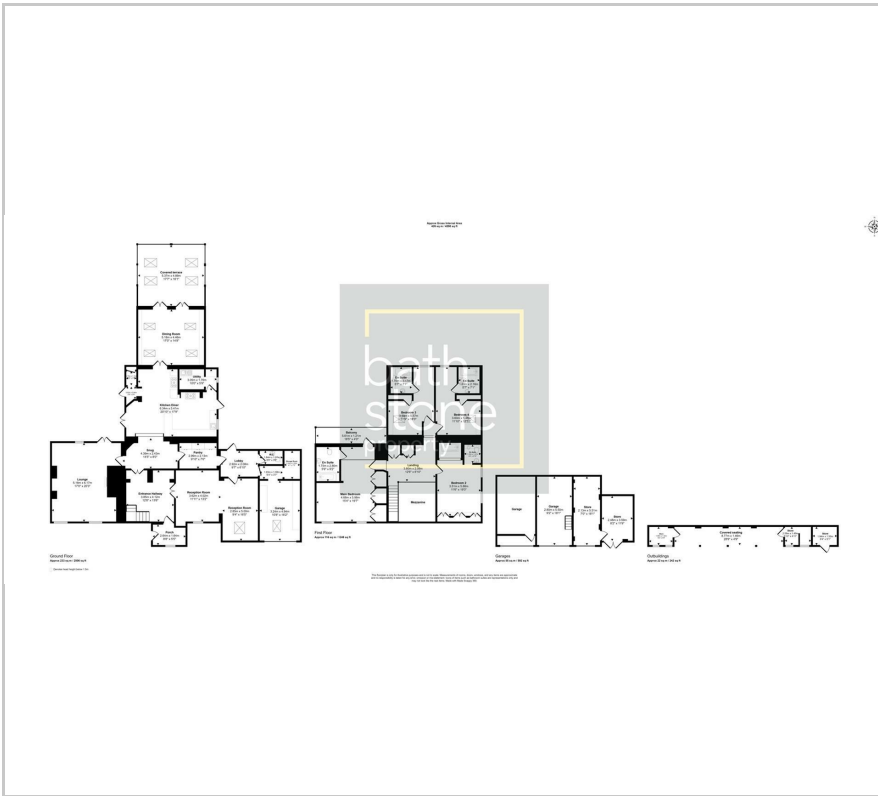


5




D

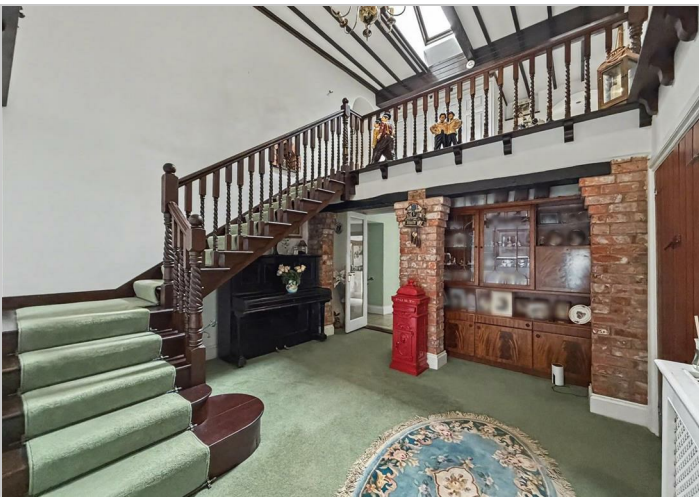
Floor Plan



Energy Efficiency Graph

Energy Efficiency Rating		Current	Potential
Very energy efficient - lower running costs			
(92 plus) A			85
(81-91) B			
(69-80) C			
(55-68) D		67	
(39-54) E			
(21-38) F			
(1-20) G			
Not energy efficient - higher running costs			
England & Wales		EU Directive 2002/91/EC 	

Please give us Feedback



These particulars, whilst believed to be accurate are set out as a general outline only for guidance and do not constitute any part of an offer or contract. Intending purchasers should not rely on them as statements of representation of fact, but must satisfy themselves by inspection or otherwise as to their accuracy. No person in this firm's employment has the authority to make or give any representation or warranty in respect of the property.