

1 Merino Gardens, London Dock, London, E1W 2DF

£850 Per Week

MERINO GARDENS IS THE LATEST BUILDING TO COMPLETE WITHIN "ST GEORGE'S" STUNNING NEW "LONDON DOCK" COMPLEX IN THE HEART OF WAPPING & THE CITY.

Hotel style facilities are available to tenants including: residents cinema, virtual golf range, swimming pool, sauna, steam room, treatment room, gymnasium and squash court. The 24 hour concierge service is also at residents disposal

This 6th floor South/West facing apartment comprises a large dual aspect reception room with open plan luxury fully fitted kitchen, spacious balcony 2 double bedrooms, luxury bathroom and En-suite. The specification is high and this apartment is available right now.

FURNISHED

AVAILABLE FROM 23.04.2026

- LONDON DOCK E1W
- 6TH FLOOR 2 BED 2 BATH
- GYM, POOL & SAUNA
- OVER 860 SQUARE FEET
- "ST JAMES" DEVELOPMENT
- WEST FACING TERRACE
- RESIDENTS CINEMA & GOLF ROOM
- HOTEL STYLE FACILITIES
- 24 HOUR CONCIERGE
- TOP LUXURY SPEC THROUGHOUT

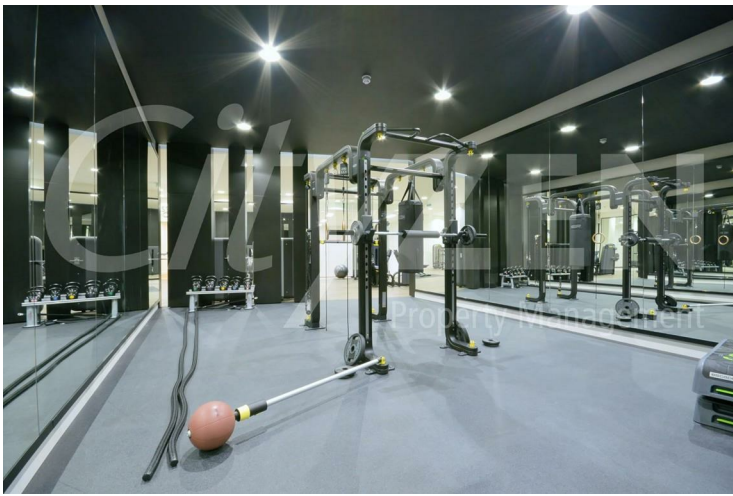
1 Merino Gardens, London Dock, London, E1W 2DF



RESIDENTS SQUASH COURT



CONCIERGE LOBBY



RESIDENTS GYM



RESIDENTS POOL



RESIDENTS GOLF SIMULATOR



RESIDENTS GYM

1 Merino Gardens, London Dock, London, E1W 2DF



RESIDENTS TREATMENT ROOM



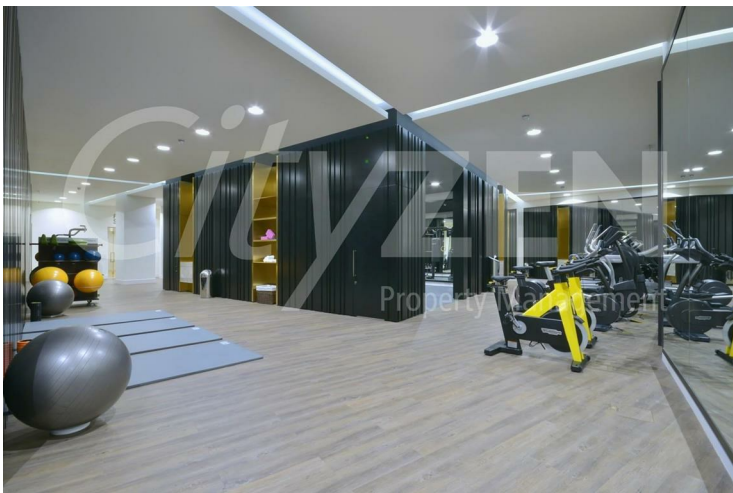
24 HOUR CONCIERGE



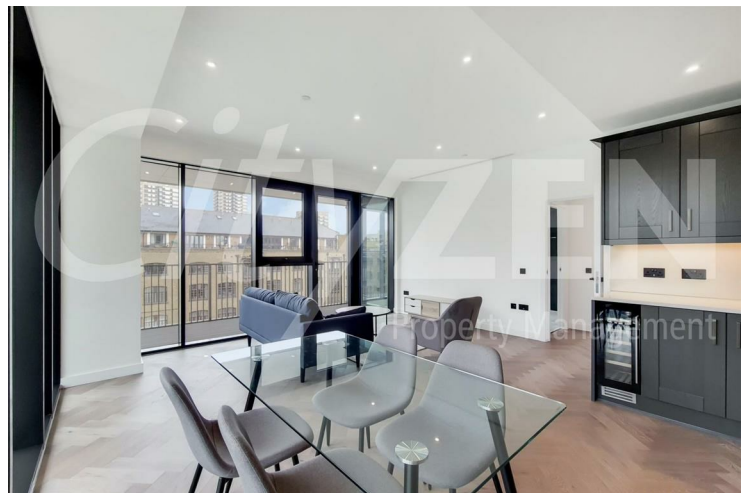
RESIDENTS GYM



RESIDENTS CINEMA



RESIDENTS GYM



RECEPTION ROOM

1 Merino Gardens, London Dock, London, E1W 2DF



KITCHEN



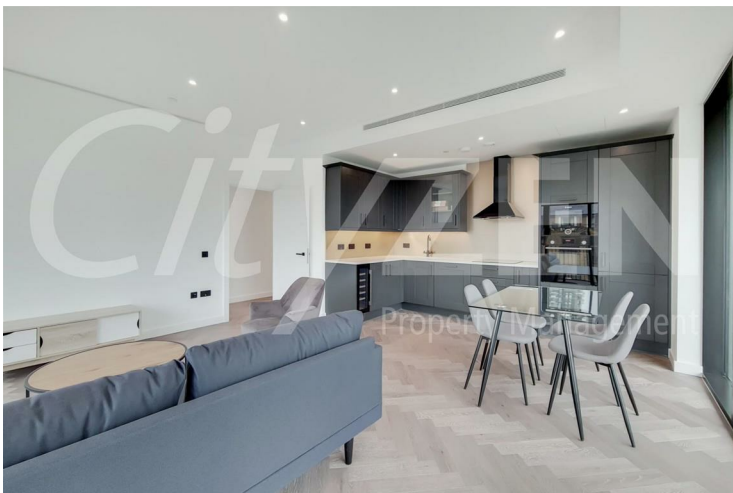
MASTER BEDROOM



MASTER BEDROOM



MASTER BEDROOM



RECEPTION ROOM



BEDROOM 2

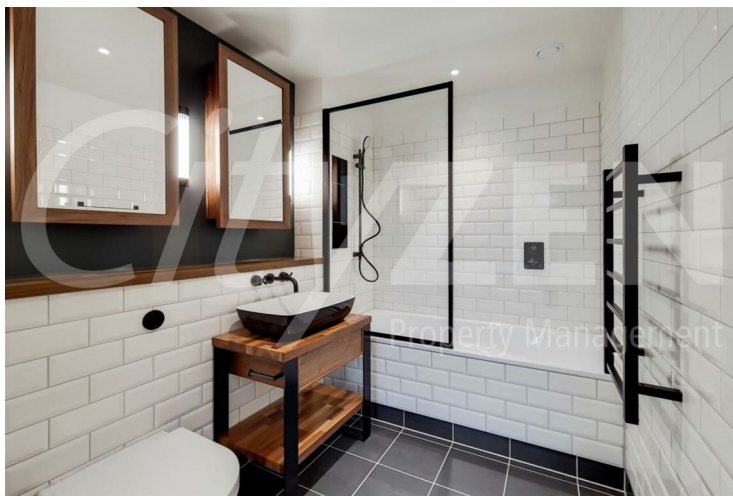
1 Merino Gardens, London Dock, London, E1W 2DF



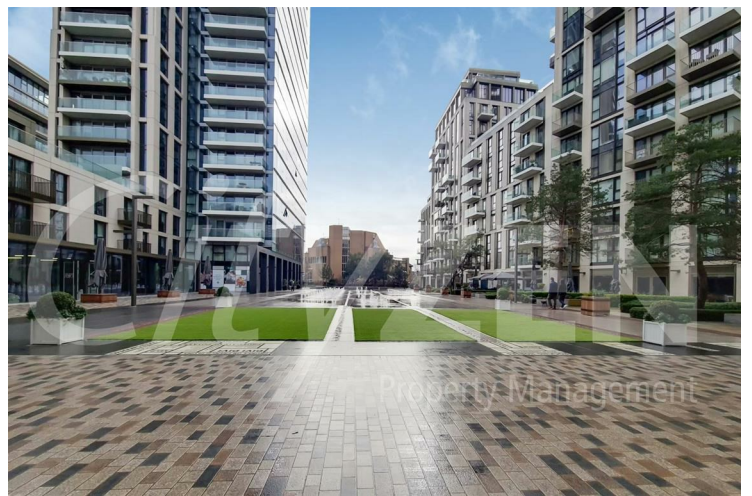
EN-SUITE SHOWER ROOM



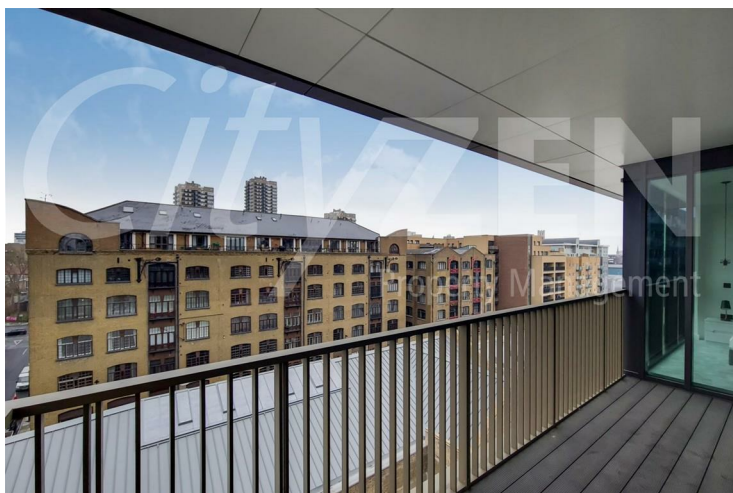
MARINO GARDENS



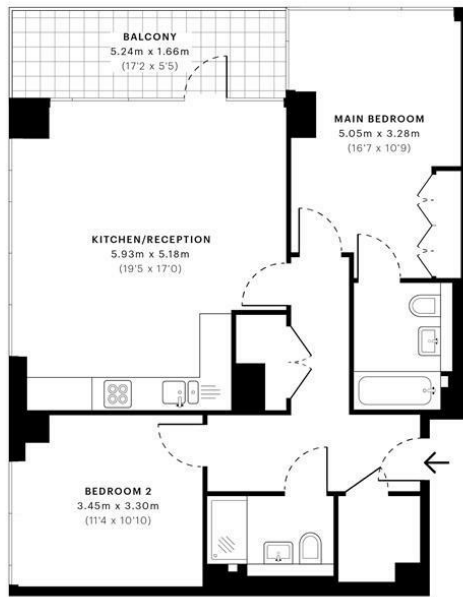
BATHROOM



LONDON DOCK



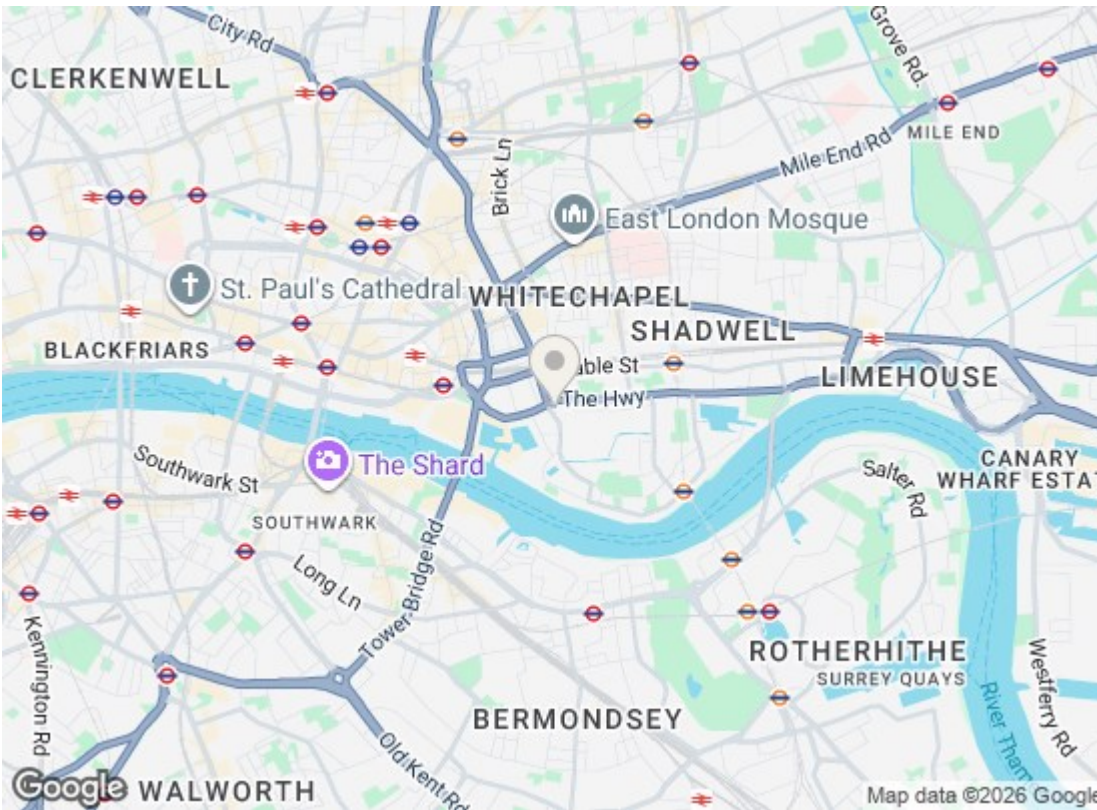
BALCONY



— Sixth Floor

These certified floor plans are produced in accordance with:
 Royal Institution of Chartered Surveyors (RICS) Professional Standards,
 Plans and graphics are illustrative only and excluded from all area calculations.
 Due to rounding, numbers may not add up precisely.
 All measurements shown are for individual room height and width
 on the maximum points of measurement contained in the plan.

SPEC ID: 563963d9f795620de66a3cb6



Energy Efficiency Rating		
	Current	Potential
Very energy efficient - lower running costs		
(92 plus) A		
(81-91) B	83	83
(69-80) C		
(55-68) D		
(39-54) E		
(21-38) F		
(1-20) G		
Not energy efficient - higher running costs		
England & Wales EU Directive 2002/91/EC		
Environmental Impact (CO ₂) Rating		
	Current	Potential
Very environmentally friendly - lower CO ₂ emissions		
(92 plus) A		
(81-91) B		
(69-80) C		
(55-68) D		
(39-54) E		
(21-38) F		
(1-20) G		
Not environmentally friendly - higher CO ₂ emissions		
England & Wales EU Directive 2002/91/EC		

We have prepared these property particulars as a general guide to a broad description of the property. They are not intended to constitute part of an offer or contract. We have not carried out a structural survey and the services, appliances and specific fittings have not been tested. All photographs, measurements, floorplans and distances referred to are given as a guide only and should not be relied upon for the purchase of carpets or any other fixtures or fittings. Lease details, service charges and ground rent (where applicable) and council tax are given as a guide only and should be checked and confirmed by your Solicitor prior to exchange of contracts.