

Guide Price £110,000



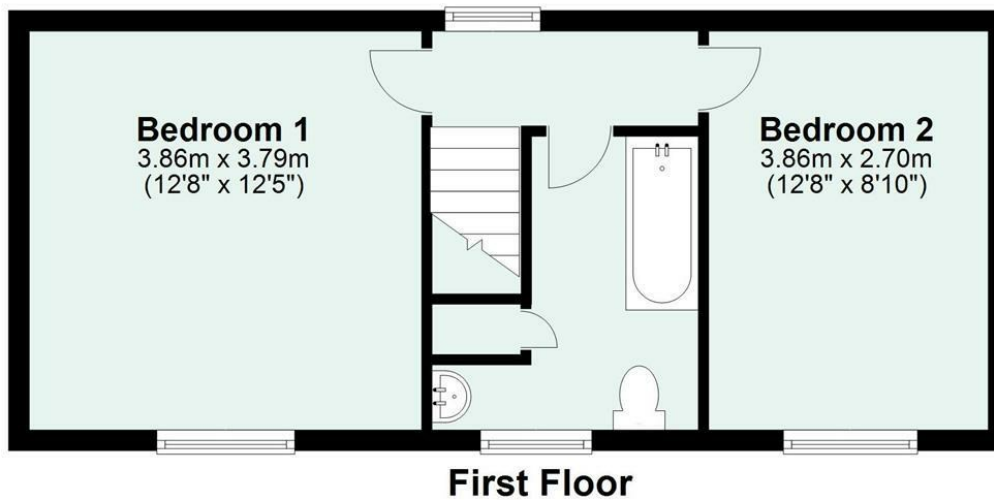
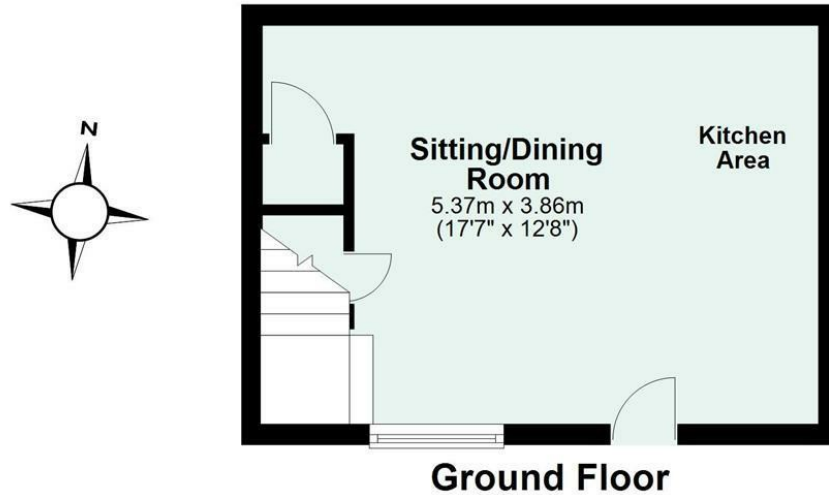
Dairy Cottage, Middle Mill Lane, Cullompton, Devon, EX15 1JP

- Spacious and light accommodation
- Open plan sitting/dining room & kitchen
- Family bathroom with white suite
- Short walk from Tesco & amenities
- Quick access to the M5 for commuting
- Two good double bedrooms
- Modern fitted kitchen
- Electric heating and uPVC double glazing
- Regular bus services to Exeter nearby

Sales, Lettings, Mortgages:

Bampton 01398 332006 | Cullompton 01884 32100 | Tiverton 01884 253500

Watch the Seddons' Video Tour A two bedroom character cottage, situated just off the High Street with two double bedrooms and open plan living accommodation downstairs. No onward chain. No parking and no outside space.

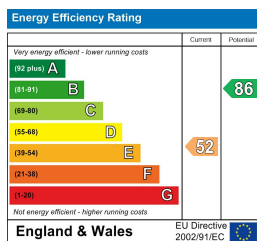


Total area: approx. 56.4 sq. metres (607.4 sq. feet)

Council Tax Band

A

EPC Rating



Viewings

Viewings by arrangement only. Call 01884 32100 to make an appointment.