



Lindsay Road, KT4

£2,595 Per calendar month

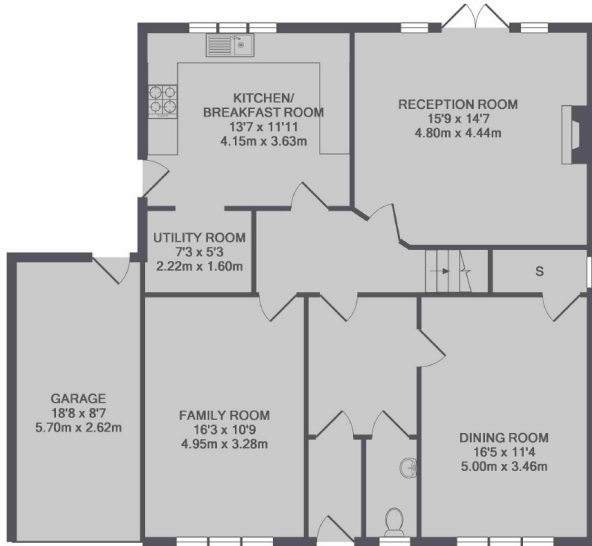
The perfect family home, this detached property has three large reception rooms, four double bedrooms, two bathrooms, a private rear garden, a garage and off-street parking.

Lindsay Road is off of Worcester Park High Street with its array of shops, bars and restaurants, and Worcester Park train station is approximately half a mile away.

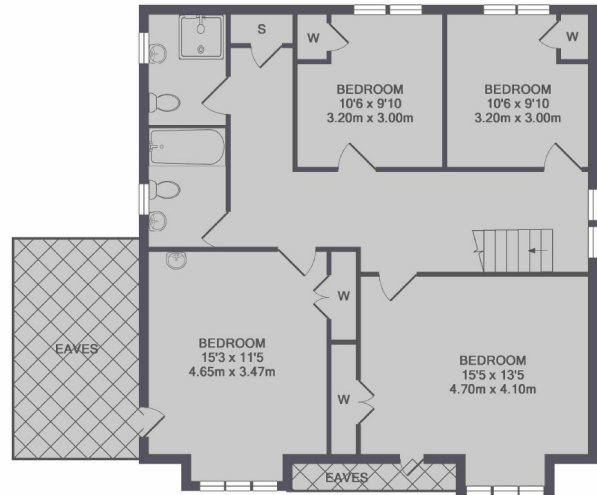
Features

- Detached
- Three Reception Rooms
- Four Double Bedrooms
- Two Bathrooms
- Garage
- Off-Street Parking

Lindsay Road, Worcester Park, KT4



GROUND FLOOR



1ST FLOOR

TOTAL APPROX. FLOOR AREA 2055 SQ. FT. (190.9 SQ. M.)