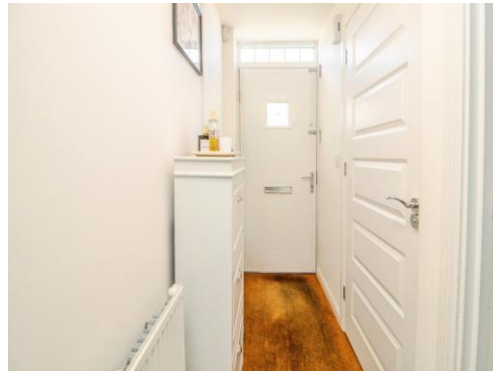




Connells

Aquitania Close
Brooklands Milton Keynes



Property Description

The property opens into a carpeted entrance hall with a wall-mounted radiator and stairs to the first floor, along with a useful ground-floor cloakroom fitted with a WC and wash hand basin. To the front, the lounge features carpeted flooring, a radiator, and a double-glazed window.

The kitchen/dining area is well appointed with a range of wall and base units, rolled worktops, and integrated appliances including an electric oven, fridge/freezer, washing machine, and dishwasher. Additional features include a gas hob with cooker hood, tiled splashbacks and flooring, under-stairs storage, a radiator, and French doors opening onto the rear garden.

Upstairs, the landing provides storage, loft access via a pull-down ladder to a partially boarded loft, and leads to three bedrooms, all carpeted with radiators and double-glazed windows with fitted shutters.

The principal bedroom benefits from an en-suite shower room, while the family bathroom is fitted with a three-piece suite including a shower over the bath.

Externally, the enclosed rear garden is mainly laid to lawn with a paved patio and hardstanding for a shed. Parking is available to the front of the property.

Entrance Hall

Carpeted flooring, wall mounted radiator, stairs rising to first floor.

Cloakroom

Low level WC, pedestal wash hand basin, wall mounted radiator.

Lounge

Carpeted flooring, wall mounted radiator, double glazed window to front.

Kitchen/Diner

A variety of wall and base units with rolled countertop over, integrated electric oven, integrated fridge & freezer, integral washing machine & dishwasher, stainless steel sink and drainer, gas hob with electric cooker hood over, double glazed window to rear garden, French doors leading out to the garden, tiled splashbacks and flooring, wall mounted radiator, under stairs storage cupboard.

Landing

Carpeted flooring, radiator, storage cupboard and loft hatch access with a pull-down ladder and a partially boarded loft.

Bedroom One

Carpeted flooring, radiator, double glazed window with fitted shutters.

Ensuite To Bedroom One

Three-piece suite comprising enclosed shower cubicle with mains fed shower, low level WC & pedestal wash hand basin, wall mounted radiator and vinyl flooring.

Bedroom Two

Carpeted flooring, radiator, double glazed window with fitted shutters.

Bedroom Three

Carpeted flooring, radiator, double glazed window with fitted shutters.

Family Bathroom

Three-piece bathroom suite comprising shower over bath, low level WC, pedestal wash hand basin, double glazed window, wall mounted radiator.

Outside

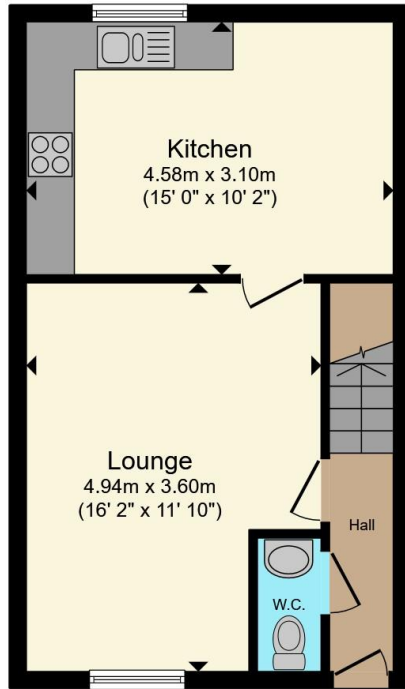
Rear Garden

Enclosed fencing with gated access, mainly laid to lawn, hardstanding for shed, paved patio.

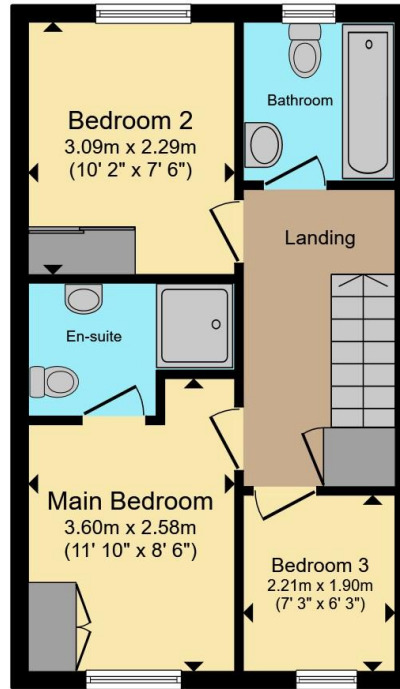
Parking

Parking to the front of the property.





Ground Floor



First Floor



Total floor area 74.4 m² (801 sq.ft.) approx

This floor plan is for illustrative purposes only. It is not drawn to scale. Any measurements, floor areas (including any total floor area), openings and orientation are approximate. No details are guaranteed, they cannot be relied upon for any purpose and they do not form part of any agreement. No liability is taken for any error, omission or misstatement. A party must rely upon its own inspection(s). Powered by www.propertybox.io



To view this property please contact Connells on

T 01908 691606

E walnuttree@connells.co.uk

26A Fyfield Barrow The Walnut Tree Local Centre Walnut Tree

EPC Rating: B Council Tax Band: C

view this property online connells.co.uk/Property/WNT308169

Tenure: Freehold



1. MONEY LAUNDERING REGULATIONS Intending purchasers will be asked to produce identification documentation at a later stage and we would ask for your co-operation in order that there will be no delay in agreeing the sale. 2. These particulars do not constitute part or all of an offer or contract. 3. The measurements indicated are supplied for guidance only and as such must be considered incorrect. Potential buyers are advised to recheck measurements before committing to any expense. 4. We have not tested any apparatus, equipment, fixtures, fittings or services and it is in the buyers interest to check the working condition of any appliances.

Connells Residential is registered in England and Wales under company number 1489613, Registered Office is Cumbria House, 16-20 Hockliffe Street, Leighton Buzzard, Bedfordshire, LU7 1GN. VAT Registration Number is 500 2481 05.

See all our properties at www.connells.co.uk | www.rightmove.co.uk | www.zoopla.co.uk

Property Ref: WNT308169 - 0010