



79 Wood Close, Windsor, Berkshire, SL4 3LA
Offers in excess of £475,000

 **HORLER**

79 Wood Close, Windsor, Berkshire, SL4 3LA

A three double bedroom terraced house is located in a popular cul-de-sac location within walking distance to Windsor Town Centre and The Long Walk and with a cut through into Windsor Great Park. The property comprises of a lounge/diner, fitted kitchen, conservatory, downstairs cloakroom, separate Utility room and a well maintained rear garden.



Entrance

Through a UPVC front door, storage cupboard, tile floor leading onto wood laminate flooring, door to utility room, door to downstairs w.c, with stairs rising to the first floor, double radiator.

Utility room

Tile floor, plumbing and space for washing machine, wall mounted boiler, range of eye level units and front aspect window

Cloackroom

Low level WC, laminate flooring, partly tiled, extractor fan, vanity wash hand basin, cupboard housing the water tank

Lounge

Front aspect bay window, two radiators, TV point, sliding door to conservatory and door to kitchen.

Conservatory

UPVC construction, tile floor, radiator and door to garden.

Kitchen

Rear aspect window, rear aspect door to garden, range of eye and base level units, one and a half bowl stainless steel sink drainer, tile floor, space for cooker with built in extractor over, space for fridge/freezer and partly tiled walls.

Bedroom one

A good sized double bedroom with two windows looking over the rear of the property, radiator and power points.

Bedroom two

A double bedroom with a window over the rear aspect, built in wardrobe, radiator, laminate flooring, ample power points.

Bedroom three

Front aspect window, radiator and wardrobe.

Bathroom

A large family bathroom which comprises a low level W.C, double-ended panel enclosed bath with an electric built in shower over bath, pedestal hand wash basin,

extractor fan, radiator, window overlooking the partly of the property, partly tiled.

Front of property

The front garden is mostly paved.

Rear garden

Laid to lawn with a patio area, wood construction shed, rear access gate, mature flower and shrub borders and pathway.

Legal Note:

Although these particulars are thought to be materially correct their accuracy cannot be guaranteed and they do not form part of any contract.





Wood Close SL4

Approximate Gross Internal Floor Area = 105.3 sq m / 1134 sq ft

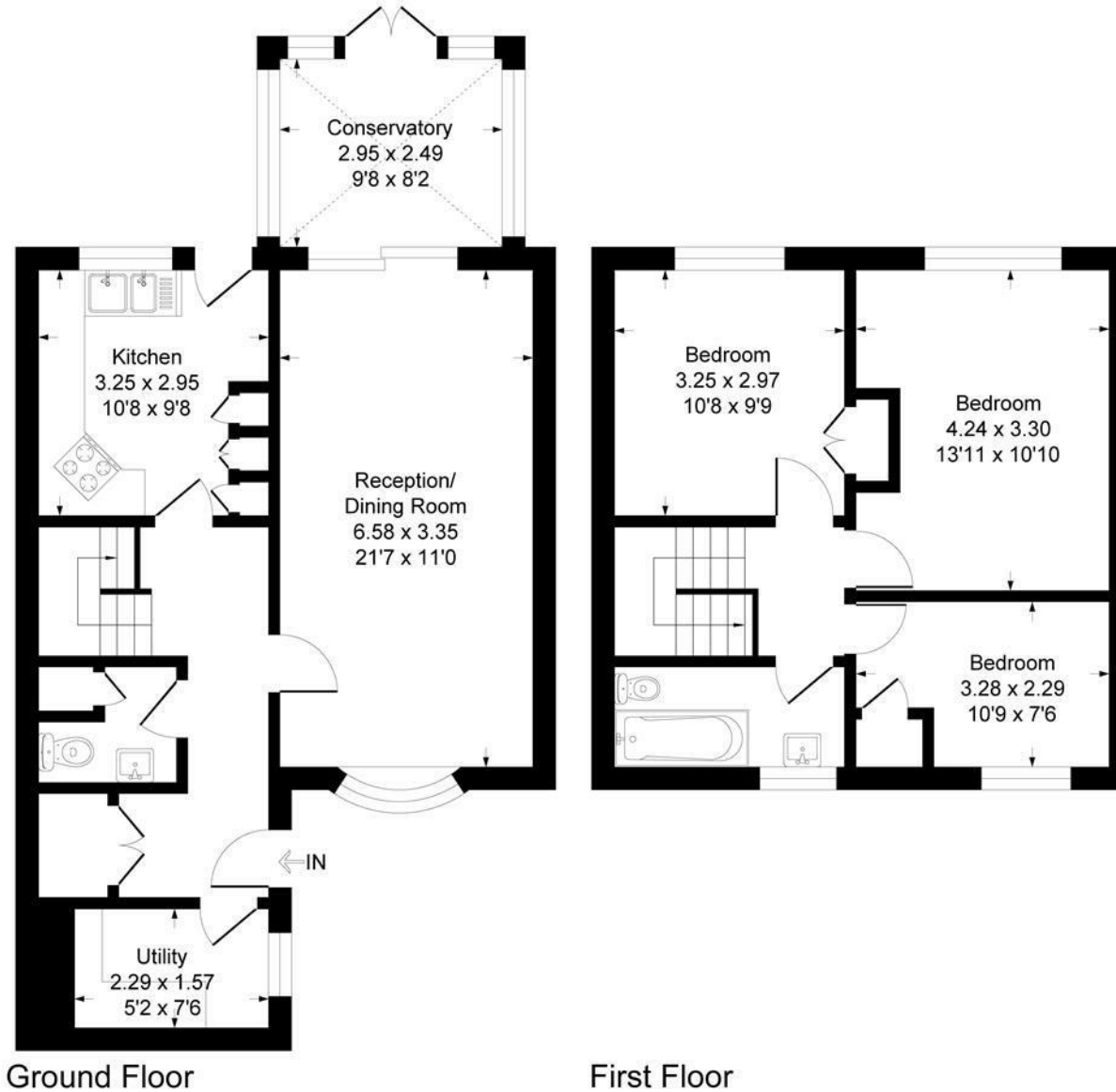


Illustration for identification purposes only, measurements are approximate, not to scale.
Produced By Esjay Property Marketing