

3
BED

A Spacious Three Bedroom Victorian House

27, Meeching Road, Newhaven, BN9 9RL

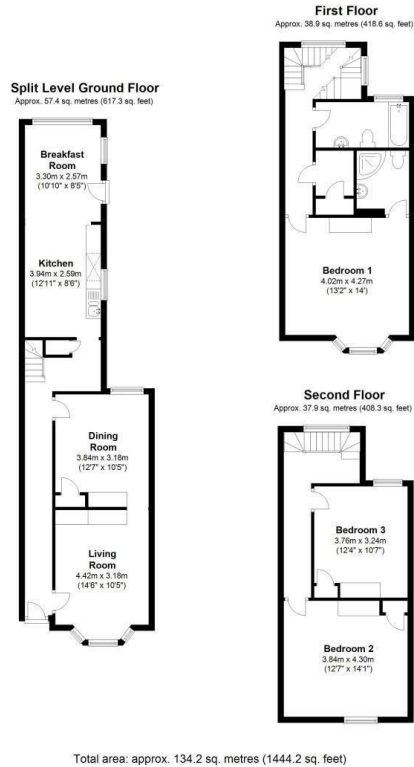


Offers Over £355,000

Freehold

phillipmann
we do more

www.phillipmann.com



inbrief...

Phillip Mann estate agents are delighted to offer for sale this Victorian house which has a wealth of features in keeping with a property of this era, including high ceilings, picture rails and ceiling roses.

The front door leads into a good sized hallway which has exposed wooden floorboards which continue into the lounge. This delightful room has a stunning original fireplace with working open fire and sash window to the front. An opening leads into the dining room which again has a fireplace with working wood burner and sash window to the rear. Moving through, the kitchen is currently set out with a range of freestanding units and has a sink unit. There are spaces for cooker, washing machine and fridge freezer. There is a dining area with tiled floor and sash windows to the rear and window to the side. A door affords access to the garden.

A fantastic spiral staircase at the rear leads upstairs to the first floor landing which has a large built in storage cupboard. The master bedroom is at the front and has a stunning cast iron fireplace with working open fire and exposed floorboards. A sash bay window overlooks the front and a door leads into the ensuite shower room which has shower, low flush toilet and sink unit. The family bathroom has a white suite which includes bath, low flush toilet and wash hand basin. There are part tiled walls, tiled floor and a sash window to the rear. Moving up to the second floor, bedroom three again has a cast iron fireplace, exposed floorboards, a sash window overlooking the rear and storage cupboard. Bedroom two, another double has a built in cupboard and delightful dormer window which offers superb views across rooftops towards Downland and the English Channel.

Outside, the rear garden has a wide range of shrubs and trees and is enclosed by walling and timber fencing. This stunning property has huge potential and although it does need a little tidying up around the edges, could become a stunning home for the right purchaser!



Energy Band F

Council Tax Band C

moreinfo...



Phillip Mann Newhaven Office
16 Bridge Street, Newhaven, BN9 9PJ
01273 517517

To see more details on this & all our homes go to
www.phillipmann.com