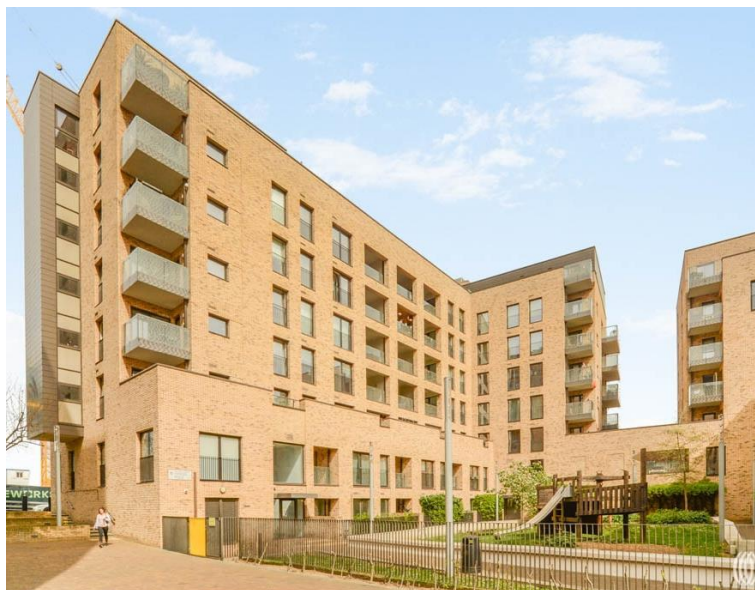


Liberty Bridge Road, London E15

£415,000 Leasehold







Description

Situated in the heart of Stratford's thriving community, this chain free one-bedroom apartment in Prairie Building offers excellent connectivity and access to green spaces. The apartment benefits from lift access and features a West-facing balcony opening directly from the bedroom, providing a private outdoor retreat with evening sunlight.

The open-plan reception and kitchen provides a spacious living area filled with natural light. The bedroom opens directly onto the balcony, whilst the apartment's practical layout offers comfortable day-to-day living. Residents have access to communal gardens with a children's playground, providing outdoor space for relaxation. The development also houses a gym, a nursery and a yoga studio.

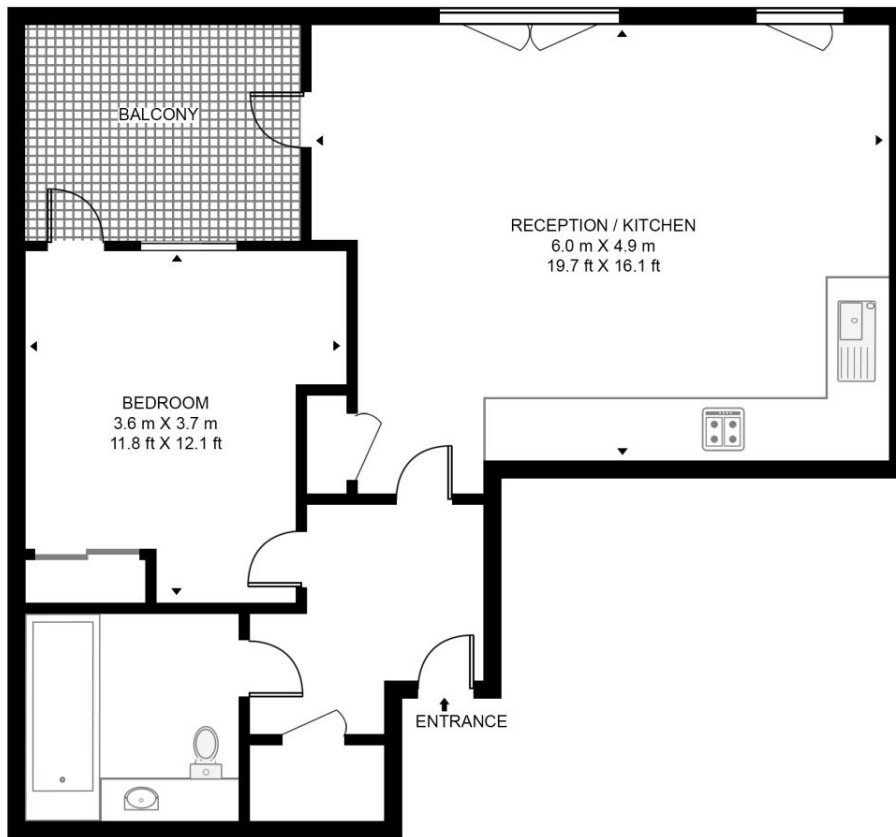
Stratford has transformed into one of East London's most dynamic neighbourhoods, blending urban energy with abundant green space. Queen Elizabeth Olympic Park lies within easy reach, offering expansive parklands, waterways and leisure facilities. The nearby areas of East Village and Hackney Wick provide a thriving social scene with independent bars, cafes, restaurants and creative spaces that reflect the area's artistic character.

- Chain free
- West-facing private balcony
- Lift access
- On site caretaker
- Communal gardens with playground
- Within a short walk from Stratford station and Westfield shopping centre
- Queen Elizabeth Olympic Park nearby
- East Village amenities moments away
- EPC Rating B

Floorplan

568 sq ft | 53 sq m

PRAIRIE BUILDING, LIBERTY BRIDGE ROAD
APPROXIMATE GROSS INTERNAL FLOOR AREA 568 SQ.FT (52.8 SQ.M)



SIXTH FLOOR



HDVA

This floor plan has been defined by the RICS Code of Measurement. This floor plan and all others are for approximate representative purposes only and upon usage is agreed to as such by the client.

WWW: hdvirtualart.com | TEL: 0203.974.1567 | EMAIL: info@hdvirtualart.com

Stratford
5 Station Street,
London E15 1DA
+4420 3147 1500
Lettingsstratford@eu.jll.com

Urban living, your way.

jll.co.uk/residential

© 2019 Jones Lang LaSalle IP, Inc. All rights reserved. All information contained herein is from sources deemed reliable; however, no representation or warranty is made to the accuracy thereof.

