



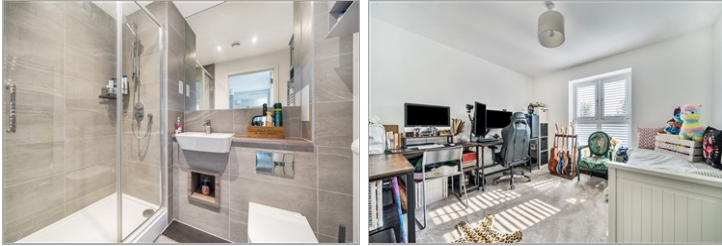
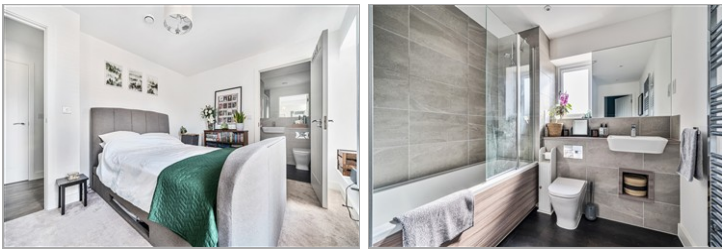
Guide Price
£315,000

Leasehold

2x  2x  1x 

**Halyard Heights,
Glenway Road,
Rochester, Kent, ME1**

Wards
Helping you move forwards



Main features

- Full market value **£315,000** or **35% share £110,250**
- Beautifully presented **first floor apartment**
- Located on the popular **Rochester Riverside development**
- **Allocated parking**
- **Close to the High Street and high speed station**

Accommodation

FIRST FLOOR

Hallway

Kitchen/Lounge/Diner : 25'3 x 11'3 (7.70m x 3.43m)

Juliet Balcony

Bedroom 1: 13'5 x 7'0 (4.09m x 2.14m)

En-Suite Shower Room: 9'2 x 5'2 (2.80m x 1.58m)

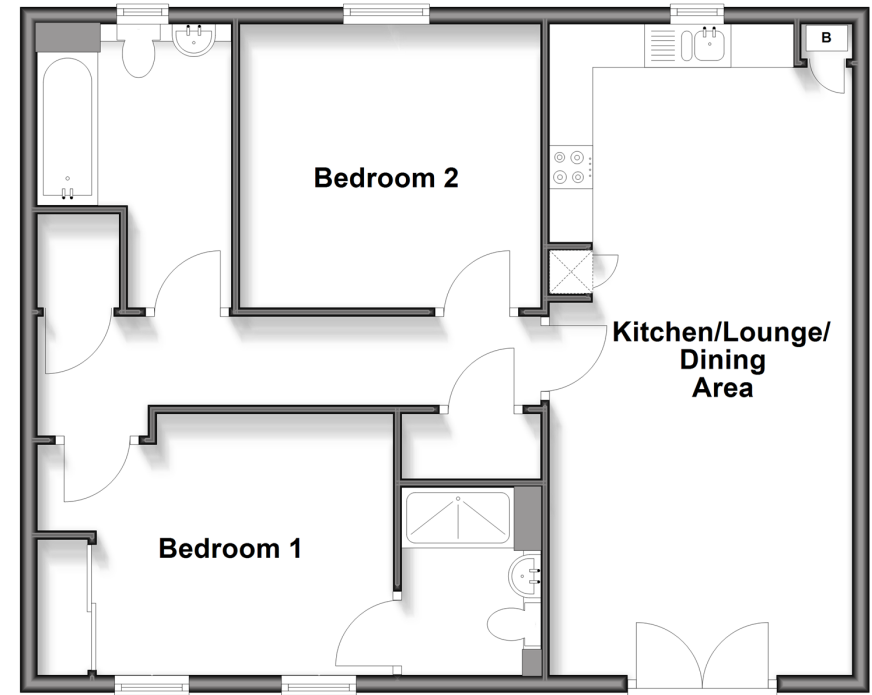
Bedroom 2: 11'6 x 11'4 (3.51m x 3.46m)

Bathroom: 10'9 x 7'4 (3.28m x 2.24m)

OUTSIDE

Allocated Parking

First Floor
Approx. 71.0 sq. metres (764.4 sq. feet)



Call Rochester - 01634 830925 ■ wardsof Kent.co.uk

- Legal advice should be taken to verify fixtures/fitings, planning, alterations and/or lease details
- Appliances & services are untested, dimensions are approximate and floor plans are not to scale



11530185/20251126/DG/SN