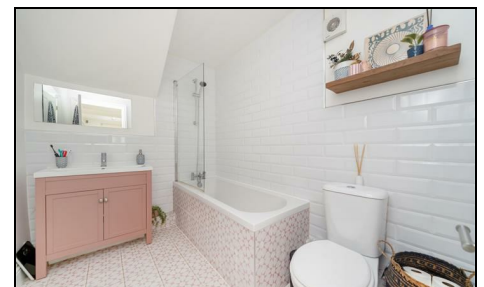
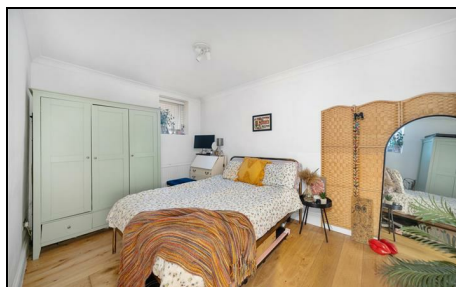


Worple Road Wimbledon, SW19 4JB

Asking Price £500,000 Leasehold

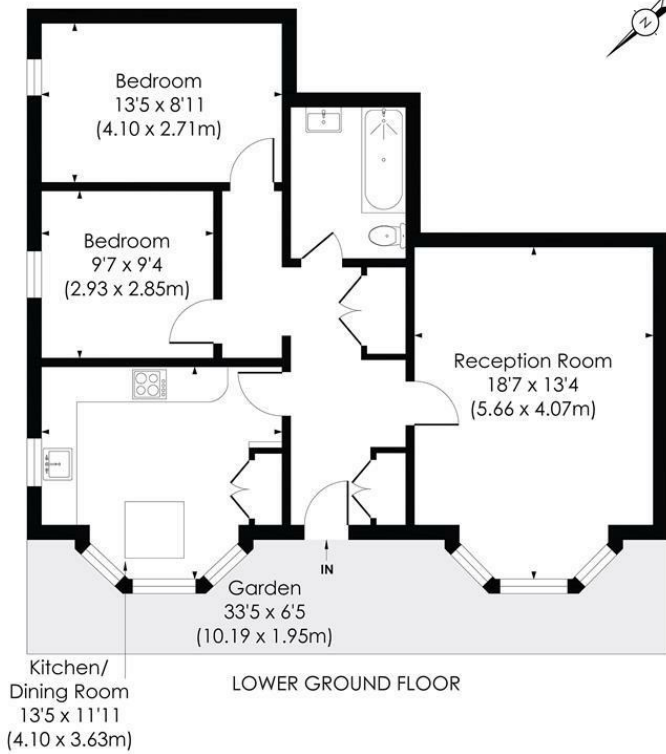


A beautifully presented two double bedroom maisonette with private outside space, conveniently located between Wimbledon Town and Raynes Park. Offering over 790 sq ft of well-appointed living space, the property comprises two generous double bedrooms, a bright and airy reception room, eat in kitchen, and a modern bathroom suite. The property enjoys easy access to the excellent transport links, shopping, dining and leisure facilities of both Wimbledon and Raynes Park. Wimbledon Chase station is also within close proximity, making this an ideal home for commuters and professionals alike. Further benefits include a long lease, ample storage space, and an allocated, off-street parking space.

WORPLE ROAD, SW19

Approx. Gross Internal Floor Area

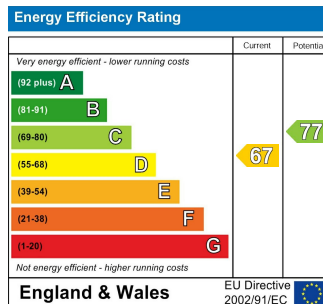
797 Sq. ft/74.02 Sq. m



pixangle
PROPERTY MARKETING

© Pixangle Property Marketing Ltd. info@pixangle.com Tel: 0208 870 2118
This floor plan has been prepared for illustration purposes only, in accordance with the latest RICS code of measuring and is not to scale.
All measurements and areas are approximate and whilst every effort has been made to ensure the accuracy of the plan contained here, no responsibility is taken for any error, omission or misstatement.

- Two Double Bedrooms
- Allocated Off Street Parking
- Excellent Transport Links
- Courtyard and Communal Gardens
- Spacious Living Space
- Leasehold - 149 Years Remaining
- Service Charge - £3250 Per Annum
- Ground Rent - £125 Per Annum
- EPC rating D
- Council Tax Band D



For Free Mortgage Quote and Best Mortgage Rates, call an Ellisons Mortgage Advisor on 020 8944 9494



Although these particulars are believed to be correct, their accuracy is not guaranteed and they do not form part of any contract.

Celebrating 30 years of successful Sales and Lettings in Merton

