



CRESCENT ROAD, SE18

£600,000

Victorian terraced house

Three bedrooms

Two bathrooms

Large garden

Chain free

Energy rating: C

@marshandparsons
marshandparsons.co.uk

MARSH &
PARSONS



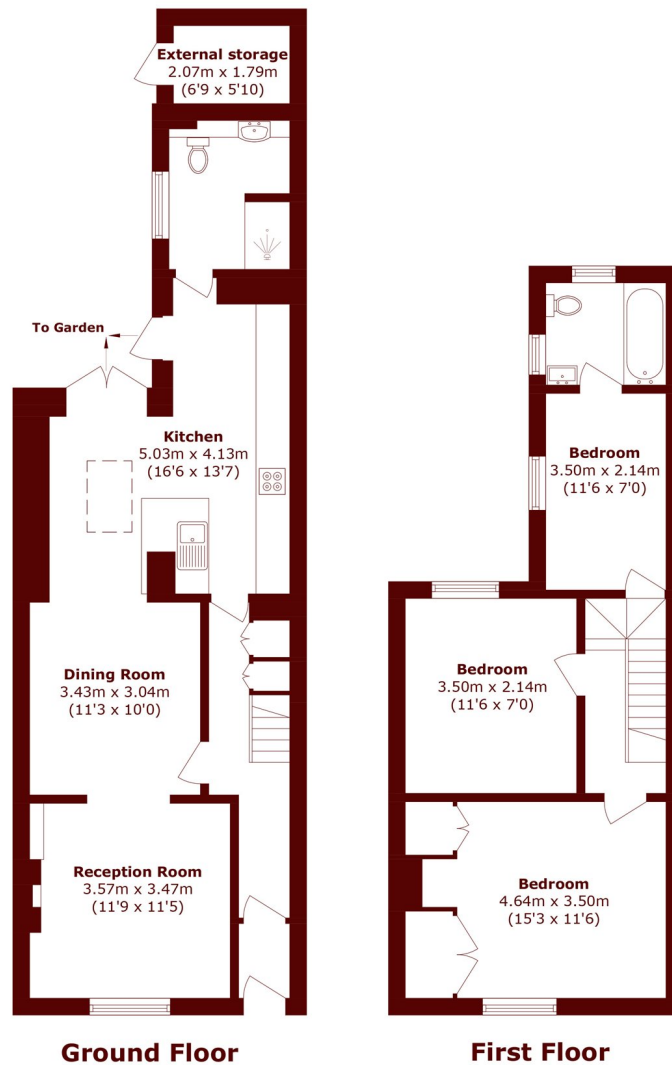
ABOUT THE PROPERTY

This attractive yellow brick-fronted three bedroom Victorian terrace has been modernised throughout, featuring a spacious double reception room leading into a beautifully finished open plan kitchen, with a family bathroom off the kitchen. To the rear is an unusually large, well-maintained garden with two storage cabins. Upstairs offers three generous double bedrooms and a modern family bathroom. Further benefits include a newly installed boiler, double glazing throughout, recent redecoration, and the property is offered chain free.

Located moments from Woolwich town centre, with excellent access to local shops, bus routes, mainline station, DLR, and the Elizabeth Line.



STEP INSIDE CRESCENT ROAD



Total area (approx.): 104.9 sq. m (1129.1 sq. ft)
External Storage (approx.): 2.9 sq. m (31.2 sq. ft)

Charlton
020 8293 0454

Energy Rating: C We aim to make our particulars both accurate and reliable. However, they are not guaranteed; nor do they form part of an offer or contract. If you require clarification on any points then please contact us, especially if you're traveling some distance to view. Please note that appliances and heating systems have not been tested and therefore no warranties can be given as to their good working order

MARSH &
PARSONS