

FLETCHERS

ESTATE AGENTS



St. Peters Grove, W6

£1,100,000

A stunning end of terrace Victorian Cottage in the heart of the highly sought after St. Peters Conservation Area. The property has been excellently renovated to offer modern family living while retaining its character from the period. The property opens into a hall that leads to a bright living room overlooking the front garden, which features a stunning Magnolia tree. To the left you have a spacious family kitchen and dining room with high-spec integrated appliances, a pantry, and plenty of built-in storage. Through the kitchen you have an office and access to a large, private patio perfect for entertaining. At the rear you have a double bedroom with plenty of built-in storage. This floor also benefits from a modern bathroom just off the hall.

Upstairs, you have a generous master bedroom to the front with plenty of natural light from two large sash windows, complete with bespoke built-in wardrobes. A further double bedroom and a modernised family bathroom also serve this floor with easy access to the loft with additional storage.

This wonderful home within a few hundred yards of the Thames Path and local restaurants and shops offers a rare opportunity to purchase a charming period property in a highly sought after location. It is offered to the market in excellent condition throughout and is a must see for young families & couples alike.



A stunning end of terrace Victorian Cottage in the heart of the highly sought after St. Peters Conservation Area. The property has been excellently renovated to offer modern family living while retaining its character from the period. The property opens into a hall that leads to a bright living room overlooking the front garden, which features a stunning Magnolia tree. To the left you have a spacious family kitchen and dining room with high-spec integrated appliances, a pantry, and plenty of built-in storage. Through the kitchen you have an office and access to a large, private patio perfect for entertaining. At the rear you have a double bedroom with plenty of built in storage. This floor also benefits from a modern bathroom just off the hall.

Upstairs, you have a generous master bedroom to the front with plenty of natural light from two large sash windows, complete with bespoke built-in wardrobes. A further double bedroom and a modernised family bathroom also serve this floor with easy access to the loft with additional storage.

This wonderful home within a few hundred yards of the Thames Path and local restaurants and shops offers a rare opportunity to purchase a charming period property in a highly sought after location. It is offered to the market in excellent condition throughout and is a must see for young families & couples alike. St. Peter's Grove is excellently located for the local amenities of the conservation area itself with many excellent pubs and restaurants nearby. The Carpenters Arms is known locally for its excellent food and selection of craft beers. The house is also within catchment of some outstanding local schools. The green space of the popular St. Peters Square is just one street away.

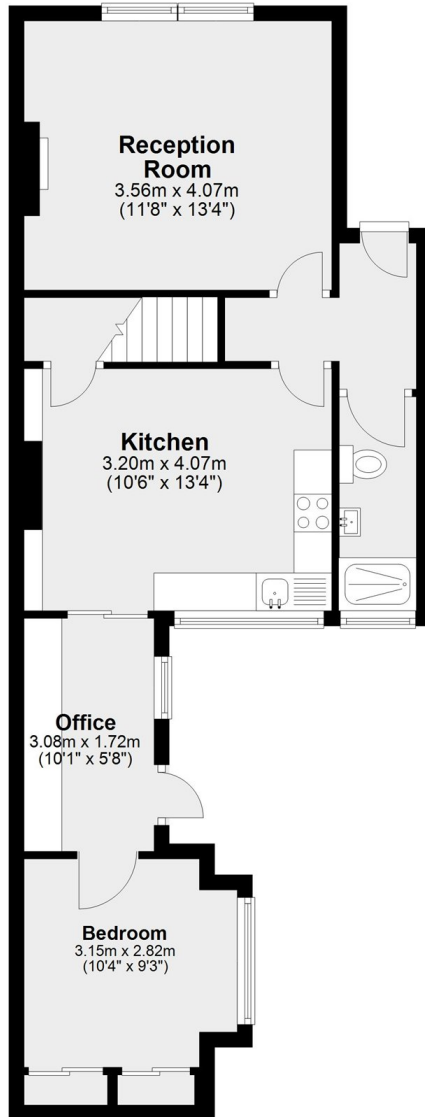
- Freehold Victorian Cottage • Three Bedrooms • Two Bathrooms •
- Separate Kitchen • Excellently Modernised • Large Accessible Loft •



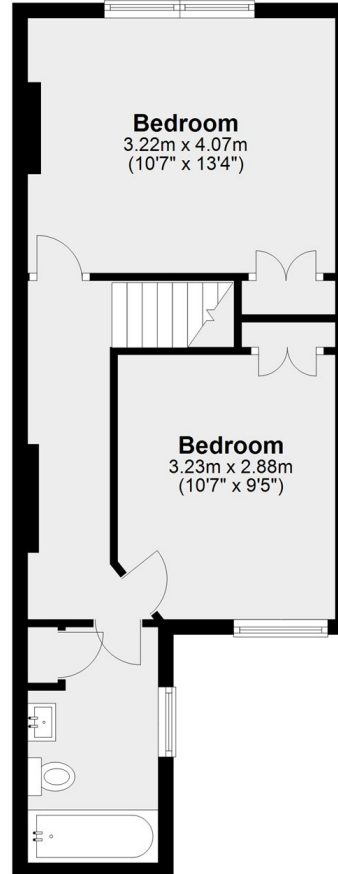
FLETCHERS

ESTATE AGENTS

Ground Floor



First Floor



Total area: approx. 89.5 sq. metres (963.4 sq. feet)

Fletchers Brook Green Sales
144 Shepherds Bush Road
Hammersmith
London
W6 7PB
020 7603 1415

Energy Rating: D We aim to make our particulars both accurate and reliable. However they are not guaranteed; nor do they form part of an offer or contract. If you require clarification on any points then please contact us, especially if you're traveling some distance to view. Please note that appliances and heating systems have not been tested and therefore no warranties can be given as to their good working order