



## Great Cumberland Place, W1H

£800 Per week

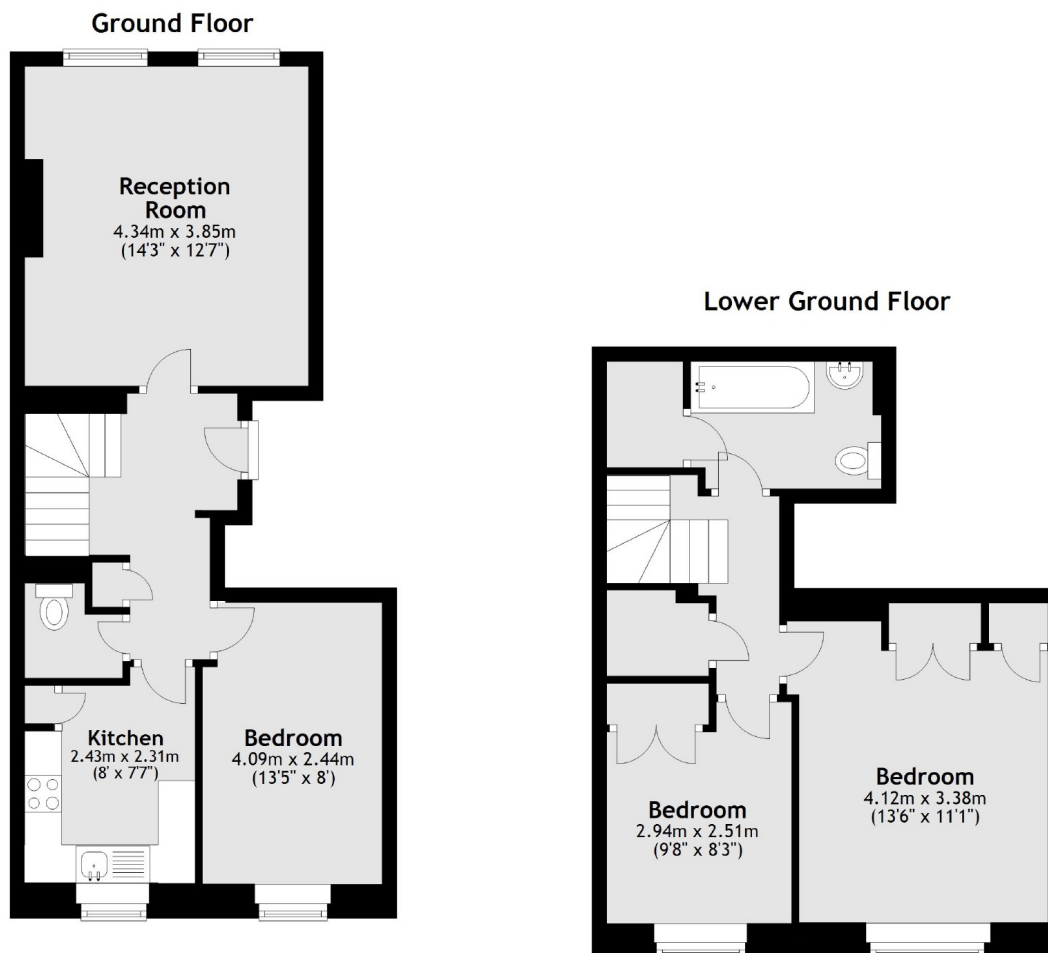
A two/three bedroom apartment arranged over the ground and lower ground floors of a Georgian conversion on Great Cumberland Place. There is a large reception, separate kitchen, bathroom and guest WC, and ample storage throughout.

The vibrant shops, bars and restaurants of Marylebone High Street are within easy reach and there are great transport links from Bond Street, Marble Arch and Marylebone stations.

### Features

- Duplex Apartment
- Two/Three Bedrooms
- One Bathroom
- Guest WC
- Separate Kitchen
- Unfurnished

# Great Cumberland Place, London, W1H



Total area: approx. 82.2 sq. metres (884.7 sq. feet)