



## ROMOLA ROAD, SE24

£2,000 per month

Double Bedrooms  
Period Conversion  
Great Location  
Suitable For Couples And Sharers  
Energy Rating: D

@marshandparsons  
marshandparsons.co.uk

MARSH &  
PARSONS



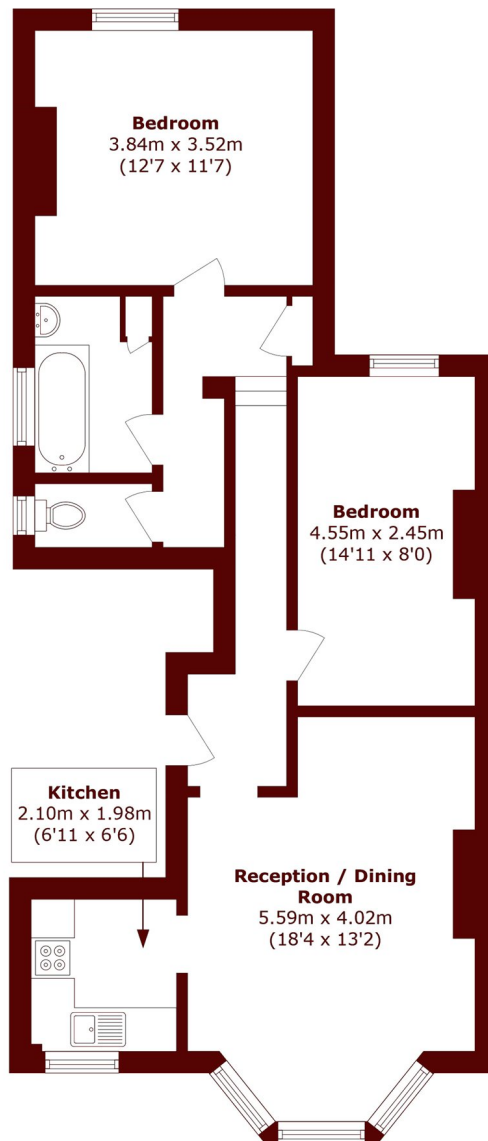
# ABOUT THE PROPERTY

A spacious and well-presented two-bedroom, one-bathroom property ideally located in the heart of Brixton. This bright and airy home offers generous living space throughout, featuring a large reception room perfect for both relaxing and entertaining, along with well-proportioned double bedrooms that provide comfortable accommodation.

Situated in a vibrant and sought-after area, the property is within easy reach of Brixton's excellent transport links, local amenities, and popular restaurants, bars, and green spaces. Ideal for professional sharers, couples, or small families seeking both convenience and comfort.



# STEP INSIDE ROMOLA ROAD



Total area (approx.): 65.6 sq. m (706.1 sq. ft)

**Brixton**  
020 7871 5040

Energy Rating: D We aim to make our particulars both accurate and reliable. However, they are not guaranteed; nor do they form part of an offer or contract. If you require clarification on any points then please contact us, especially if you're traveling some distance to view. Please note that appliances and heating systems have not been tested and therefore no warranties can be given as to their good working order

**MARSH &  
PARSONS**