



PCM

£1,975 PCM

48 - 52 Bacon Street

London, E2 6DU

Set within this private gated period conversion is this spacious one-bedroom apartment, located just moments from Brick Lane.

Its period style gated courtyard entrance sets the apartment off well, creating a 'quiet feel' yet so close to the action of the bars and Restaurants of Shoreditch.

The apartment is located on the second floor and comprises of a large open reception room with a Juliette balcony, brand new kitchen a modern bathroom, wooden floors and high ceilings.

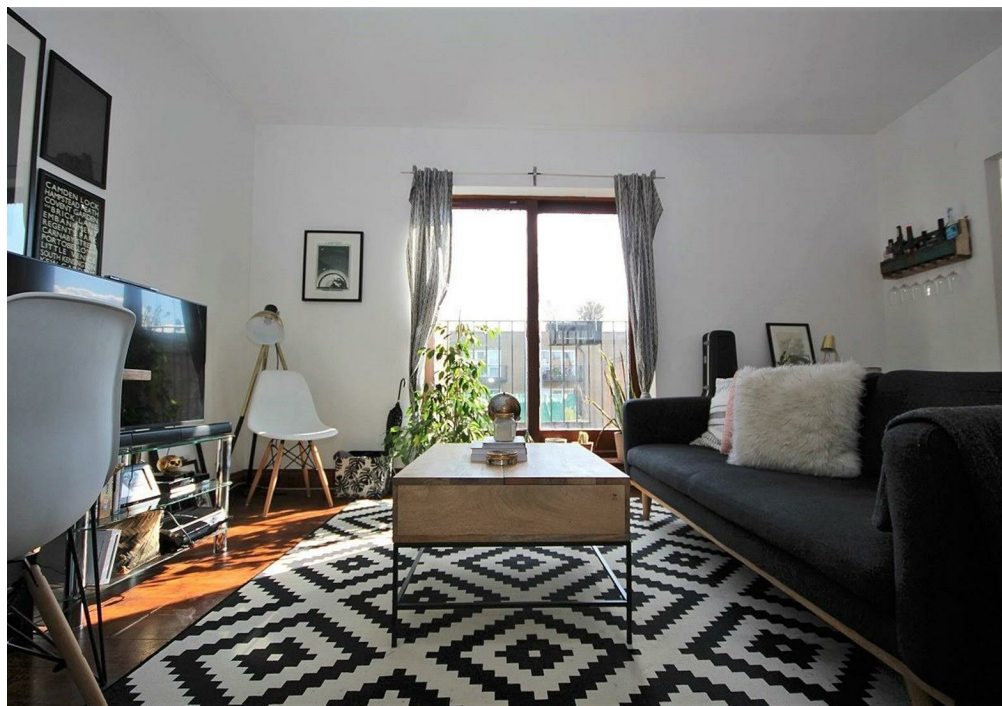
Located just moments from Shoreditch High Street Overground station the apartment is also within close proximity to Liverpool Street and Old Street Stations as well as bus routes that take you to the city.

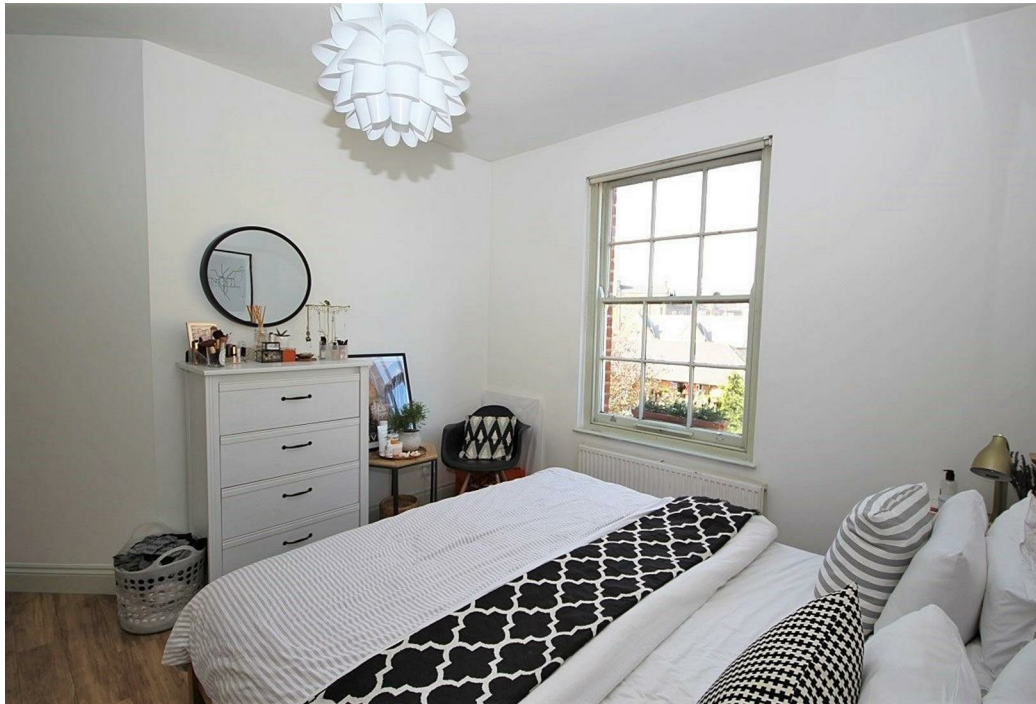
Available from 17th of July

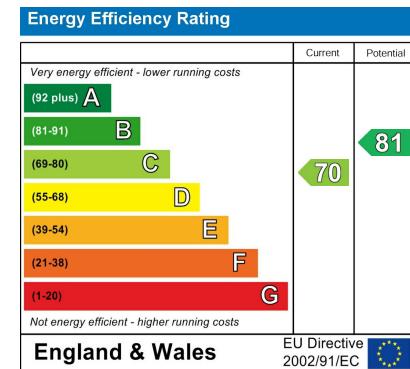
5 weeks deposit: £2278.84

Council Tax Band C

PARKING CAN BE AVAILABLE FOR A ADDITIONAL £100 PER MONTH







Agents Note: Whilst every care has been taken to prepare these particulars, they are for guidance purposes only. All measurements are approximate and are for general guidance purposes only and whilst every care has been taken to ensure their accuracy, they should not be relied upon and potential buyers/tenants are advised to recheck the measurements

OFFICE ADDRESS

88 Cheshire Street
London
E2 6EH

OFFICE DETAILS

0207 739 6969
info@peachproperties.com
www.peachproperties.com