




Castor Court  
Yateley, GU46 7RL  
£435,000



## Property Details

 3 bedrooms

 1 bath

 EPC Rating TBC

 856 sqft

 Sandhurst Station 2.3 miles

- Semi-detached house which is beautifully presented
- Located in this popular close in Yateley
- Living room with log burner
- Modern kitchen
- Conservatory
- Bathroom and cloakroom
- Enclosed and private rear garden
- Garage and driveway
- Council tax band D currently £2285 per annum

Located in this quiet close this 3 bedroom semidetached house is perfect for families or professionals. There is a modern kitchen as well as an attractive living room with a log burner. To the rear of the property overlooking the enclosed and private garden is the conservatory. The house benefits from a downstairs bathroom and upstairs there are three bedrooms with the main bedroom having its own cloakroom. The house also benefits from a garage and driveway parking and is located within walking distance of local schools and amenities as well as green spaces like Monteagle Park and Trinity lakes. The property is situated in a sought-after area of Yateley with good access to the A30 and M3 making it ideal for commuters.

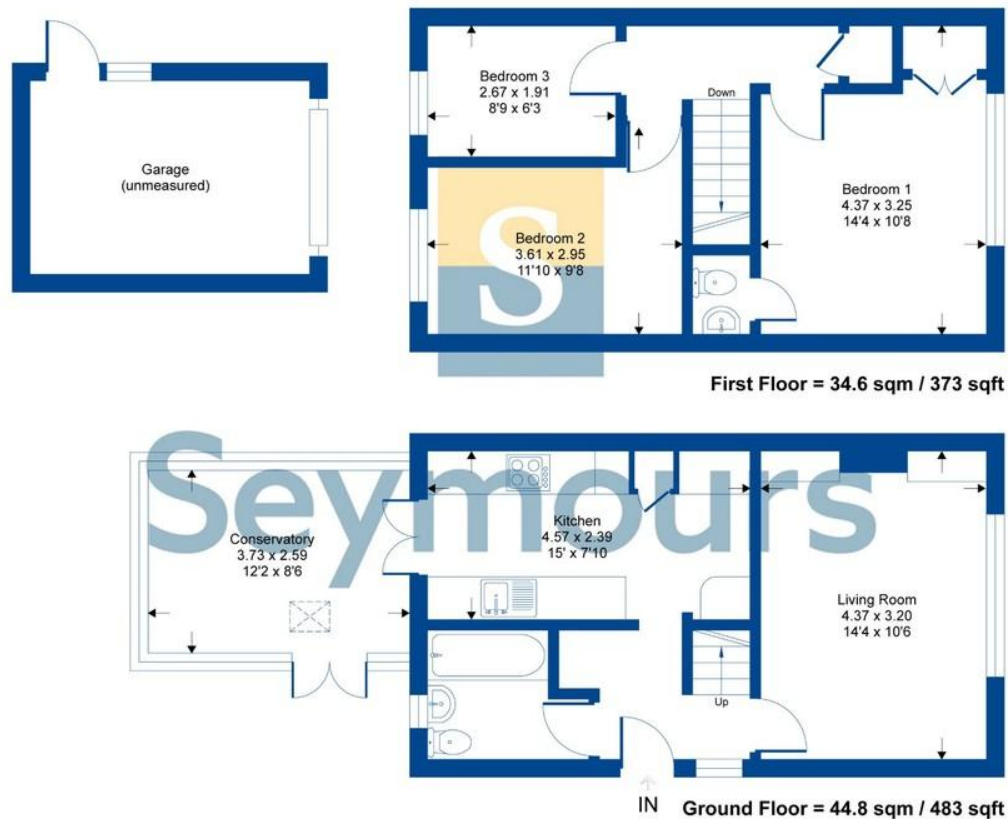




## Property Details

### Castor Court

Approximate Gross Internal Area = 79.5 sq m / 856 sq ft (excludes garage)



Whilst every attempt has been made to ensure the accuracy of the floor plan contained here, measurements of doors, windows, rooms and any other items are approximate and no responsibility is taken for any error, omission or mis-statement. This plan is for illustrative purposes only and should be used as such by any prospective purchaser.



Seymours Blackwater Office 6 Kings Parade, 34 London Road, Blackwater, Camberley, Surrey, GU17 9AA  
01276 534100 / james@seymours-blackwater.co.uk / seymours-estates.co.uk

The information contained in these Sales Particulars does not form part of any contract neither is any warranty given or implied by Seymours or their clients as to the accuracy of measurements of details stated. Every effort is made to ensure that our Sales Particulars are correct and reliable. We do not test service, systems and appliances and we are unable to verify they are in working order.