



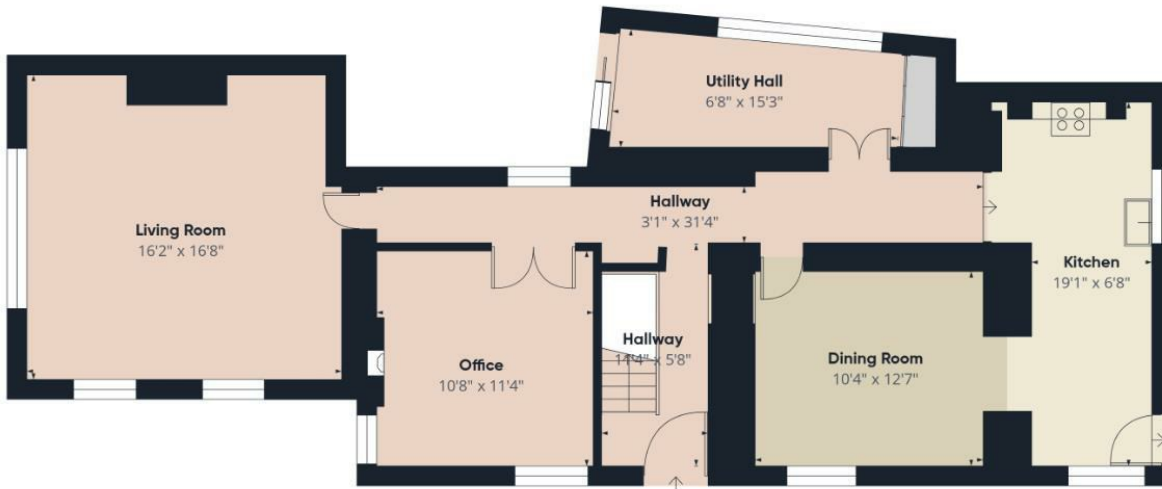
Olive

ESTATE AGENTS



Hillside Combe Batch, Wedmore, Somerset BS28 4DX £700,000

*** STUNNING AND EXTREMELY SPACIOUS, UPDATED AND IMPROVED FAMILY HOME, ALMOST RIGHT IN THE VERY CENTER OF WEDMORE *** EXCEPTIONALLY WELL PRICED *** 4/5 BEDROOMS *** 2/3 RECEPTION ROOMS (OFFICE / BEDROOM 5) *** FABULOUS LIVING ROOM WITH A HUGE MEDIA WALL AND BOOKCASE *** KITCHEN WITH A BEAUTIFUL FEATURE WELL *** UTILITY HALL WITH STORAGE *** LARGE MASTER BEDROOM WITH EN-SUITE *** FAMILY BATHROOM *** BEAUTIFUL REAR GARDEN WITH A SUPER-COOL OUTDOOR ENTERTAINING AREA *** COUNCIL TAX BAND E *** EPC RATING D *** NO ONWARD CHAIN ***



Floor 0



Floor 1

Approximate total area⁽¹⁾
1639 ft²

(1) Excluding balconies and terraces

Calculations reference the RICS IPMS 3C standard. Measurements are approximate and not to scale. This floor plan is intended for illustration only.

GIRAFFE 360

