



51 On The Hill, Watford  
£525,000





## 51 On The Hill

Watford, Watford



THREE BEDROOM MID-TERRACE PROPERTY LOCATED ON A POPULAR RESIDENTIAL ROAD IN CARPENDERS PARK OFFERED TO THE MARKET WITH NO UPPER CHAIN. Welcomed to the market is this three bedroom mid terrace property located on a quiet residential road in Carpenders Park. This brick built property has parking bay's to the front offered on a first come first serve basis and to the rear a South Facing rear garden.

The property is located conveniently for local schools, shopping facilities and transport links including Carpenders Park Overground station with direct links to both London Euston and Watford Junction.

Council Tax band: D

Tenure: Freehold

EPC Energy Efficiency Rating: D

EPC Environmental Impact Rating: D

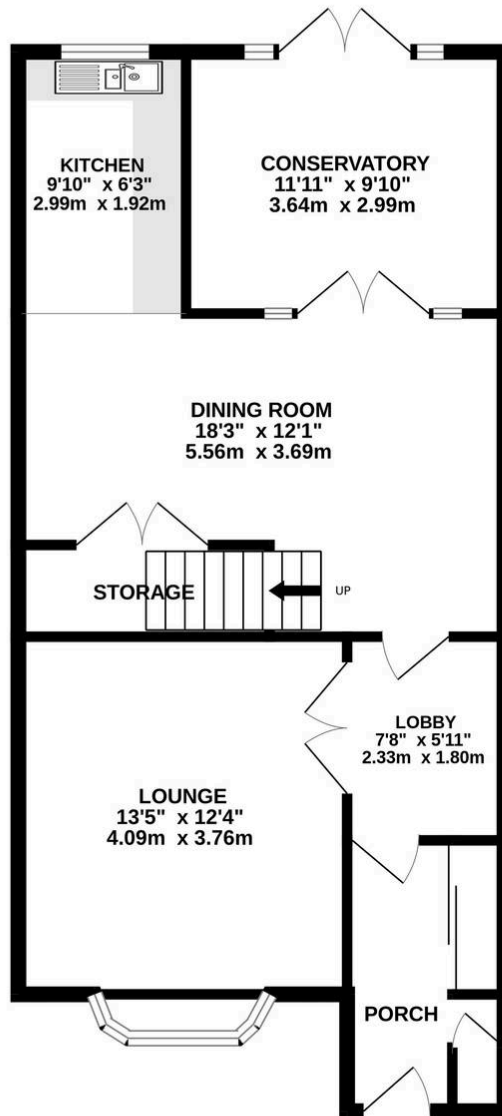
- NO UPPER CHAIN
- THREE GOOD SIZED BEDROOMS
- EXTENDED TO THE REAR / CONSERVATORY
- GARAGE IN A BLOCK
- SOUTH FACING GARDEN
- QUIET LOCATION
- DOUBLE GLAZED WINDOWS
- PLENTY OF PARKING BAYS - FIRST COME FIRST SERVE BASIS



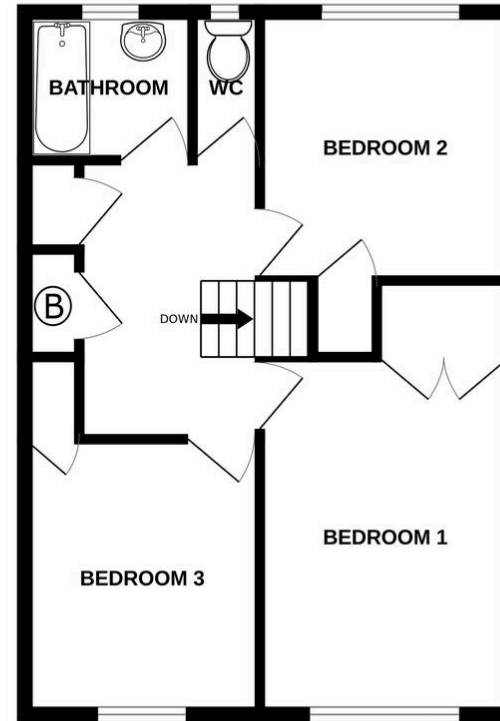




GROUND FLOOR  
680 sq.ft. (63.1 sq.m.) approx.



1ST FLOOR  
481 sq.ft. (44.6 sq.m.) approx.



TOTAL FLOOR AREA : 1160 sq.ft. (107.8 sq.m.) approx.

Whilst every attempt has been made to ensure the accuracy of the floorplan contained here, measurements of doors, windows, rooms and any other items are approximate and no responsibility is taken for any error, omission or mis-statement. This plan is for illustrative purposes only and should be used as such by any prospective purchaser. The services, systems and appliances shown have not been tested and no guarantee as to their operability or efficiency can be given.  
Made with Metropix ©2026





## Fairfield – Oxhey

1 Station Approach, Watford – WD19 7DT

020 8428 0540 • [rob@fairfieldstates.co.uk](mailto:rob@fairfieldstates.co.uk) • [fairfieldstates.co.uk/](http://fairfieldstates.co.uk/)

We have prepared these particulars as a general guide of the property and they are not intended to constitute part of an offer or contract. We have not carried out a detailed survey of the property and we have not tested any apparatus, fixtures, fittings, or services. All measurements and floorplans are approximate, and photographs are for guidance only. These should not be relied upon for the purchase of carpets or any other fixtures or fittings. Lease details, service