



Carlisle Street

Soho, W1D

Asking Price £3,250,000

Exquisite 3-bedroom maisonette spanning 3 floors in a Grade II listed Soho building. Period charm meets contemporary design with landscaped terrace, en-suites throughout, and smart home technology.

CHESTERTONS



Carlisle Street

Soho, W1D

- Secret Roof Garden
- Bespoke Joinery
- High Ceilings Throughout
- Grade II Listed Originally Built In The 1670's



Nestled within a distinguished Grade II listed building on one of Soho's most coveted addresses, this exceptional three-bedroom maisonette represents the very essence of central London living. Spanning four meticulously designed floors, this stunning residence seamlessly blends original period character with bespoke contemporary interiors, creating a rare sanctuary in the midst of the West End's vibrant energy.

Step inside to discover 1,788 square feet of thoughtfully curated living space where every detail has been considered. The reception room captivates with its striking original marble fireplace, setting the tone for a home that honours its heritage while embracing modern

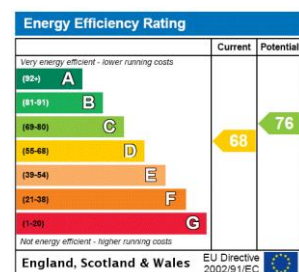
Tenure: Leasehold 985 years 11 months

Service Charge: £2500

Ground Rent: £0

Local Authority: Westminster

Council Tax Band: H



Chestertons Covent Garden Sales

196 Shaftesbury Avenue

London

WC2H 8JF

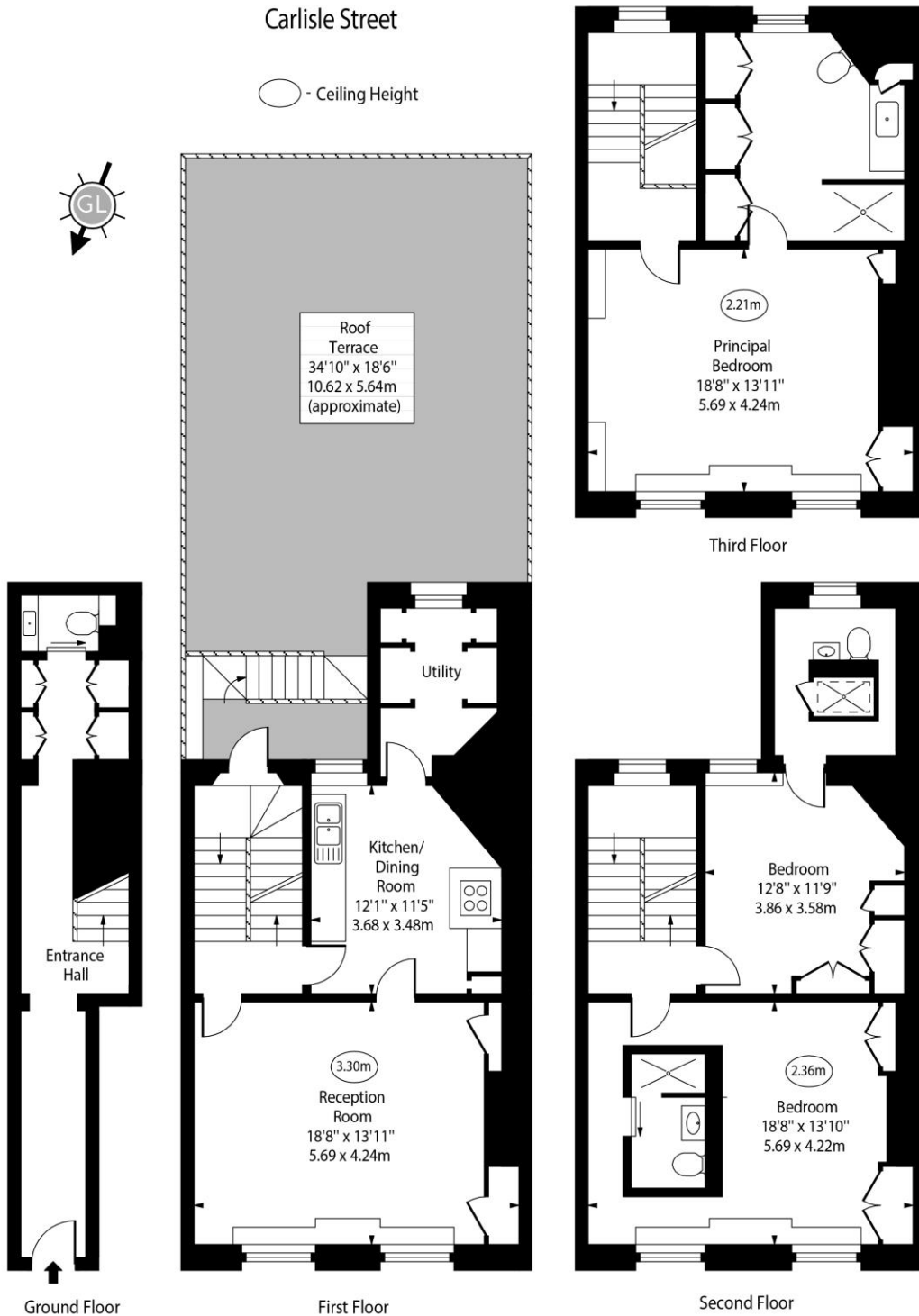
coventgarden@chestertons.co.uk

020 3040 8300

chestertons.co.uk

Carlisle Street

○ - Ceiling Height



Approx Gross Internal Area 1788 Sq Ft - 166.11 Sq M

Every attempt has been made to ensure the accuracy of the floor plan shown. However, all measurements, fixtures, fittings, and data shown are approximate interpretations and for illustrative purposes only. Measured according to the RICS. Not To Scale.

www.goldlens.co.uk
Ref. No. 030117K