



**Guide Price**  
**£575,000**

**Freehold**

3x  2x  2x 

**Langdale Rise,  
Maidstone, Kent ME16**

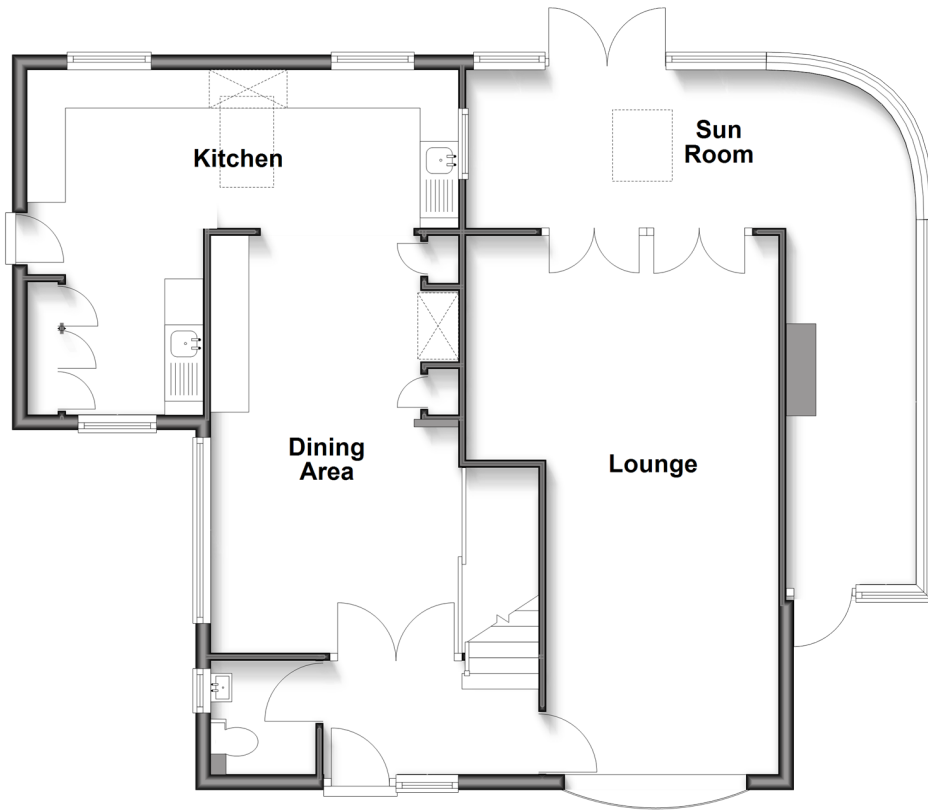
**OVER 60?**

Secure this property  
for up to **59% less!**

*Wards*  
Helping you move forwards

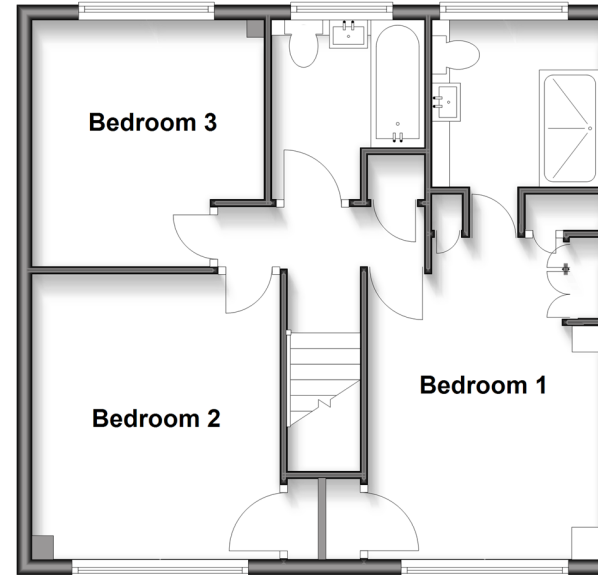
## Ground Floor

Approx. 90.9 sq. metres (978.2 sq. feet)



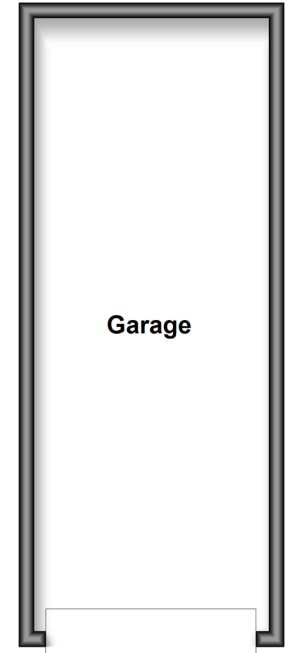
## First Floor

Approx. 52.8 sq. metres (567.9 sq. feet)



## Outbuilding

Approx. 24.7 sq. metres (265.6 sq. feet)



## Accommodation

### GROUND FLOOR

Hallway  
Cloakroom  
Lounge: 25'1 x 13'4 (7.65m x 4.07m)  
Sun Room: 20'4 x 7'8 (6.20m x 2.34m) plus  
15'3 x 6'2 (4.65m x 1.88m)  
Dining Area: 10'5 x 10'3 (3.18m x 3.13m)  
Kitchen/Utility: 19'3 x 15'4 (5.87m x 4.68m) plus  
8'0 x 7'0 (2.44m x 2.14m)

### FIRST FLOOR

Bedroom 1: 14'0 x 10'1 (4.27m x 3.08m)  
En-Suite Shower Room  
Bedroom 2: 12'9 x 10'7 (3.89m x 3.23m)  
Bedroom 3: 10'10 x 10'0 (3.30m x 3.05m)  
Bathroom

### OUTBUILDING

Garage

### OUTSIDE

Rear Garden  
Front Garden  
Driveway



## Main features

- Beautiful detached family house
- Spacious layout throughout
- Garage and off road parking to front
- Stunning rear garden, landscaped and picturesque views
- Popular residential area with easy access to local primary and secondary schools along with amenities



### Nearest Schools

Primary Schools: St Francis' Catholic Primary, Maidstone 0.2 miles, Brunswick House Primary 0.3 miles, Palace Wood Primary 0.5 miles

Secondary Schools: St Simon Stock Catholic School 0.3



### Transport Information

Train Stations: Maidstone Barracks 0.5 miles, Maidstone West 0.7 miles, Maidstone East 0.7 miles



### Address

Langdale Rise, Maidstone, Kent ME16



### Directions

For directions to this property please contact us.



**Wards**  
Helping you move forwards

Call Maidstone Branch 01622 683737 ■ [wardsof Kent.co.uk](http://wardsof Kent.co.uk)



■ Through a Homewise Home For Life Plan people aged 60+ can secure this property for up to 59% less, by purchasing a Lifetime Lease



13158869/20260325/DS/KW