



33 Rae Crescent, Wantage, OX12 7GN

£3,000 PCM - 1st August 2026.

- Spacious open-plan kitchen/dining room
- All integrated appliances
- Five good-sized bedrooms
- A private, south-facing garden
- Single Garage and off-street parking for two vehicles
- EPC B. Council Tax Band G

33 Rae Crescent, Wantage OX12 7GN

A beautifully presented five-bedroom family home, located on the outskirts of Wantage . The property is located within the popular Kingsgrove development, within walking distance of local schools, nursery provision, neighbourhood amenities and sports facilities.

Comprising spacious open-plan kitchen/dining room with integrated appliances, including a fridge/freezer, dishwasher, oven, hob, and microwave. A separate utility room with a washing machine. A generously sized living room. The dining area leads through bi-fold doors open onto a private, south-facing garden, with a greenhouse and raised flower beds. Five good-sized bedrooms. The principal bedroom benefits from an en-suite shower room and built-in storage. The second bedroom also features fitted wardrobes and shares a Jack-and-Jill bathroom with bedroom three. The option to make one of the bedrooms into an office space. Single Garage and off-street parking for two vehicles. Water softener and gas central heating. EPC B. Council Tax Band G.

The Ofcom Broadband Checker states there is:

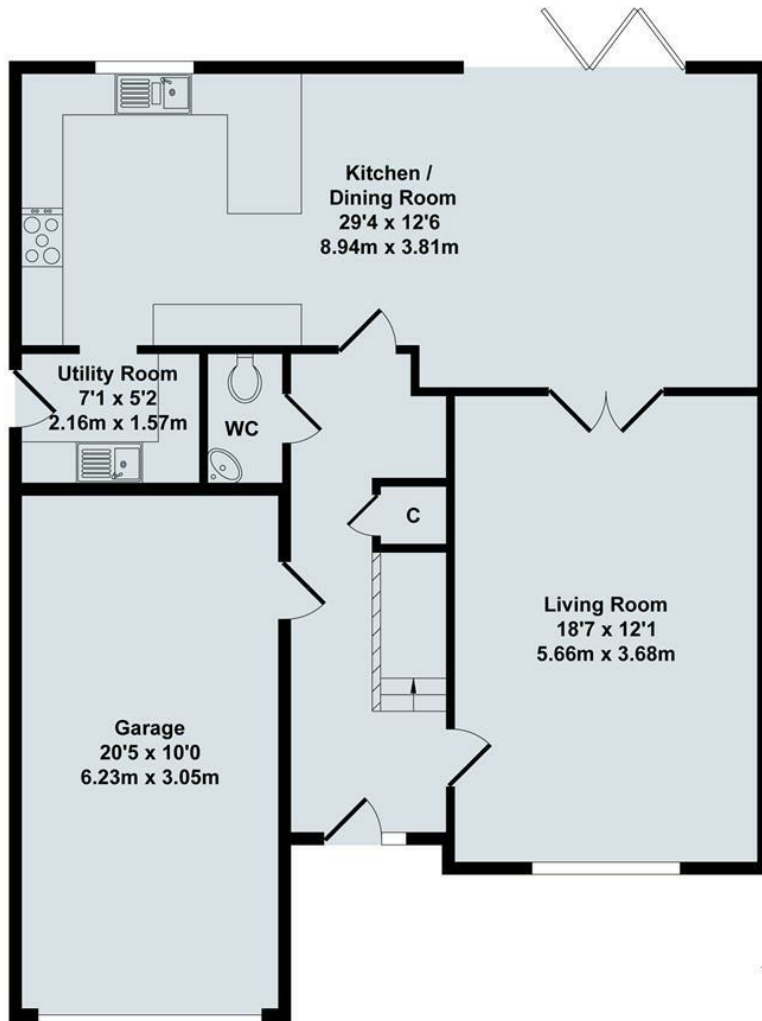
- Ultrafast broadband has download speeds of greater than 300Mbps

When an application is agreed a holding deposit will be required of a maximum of one weeks rent

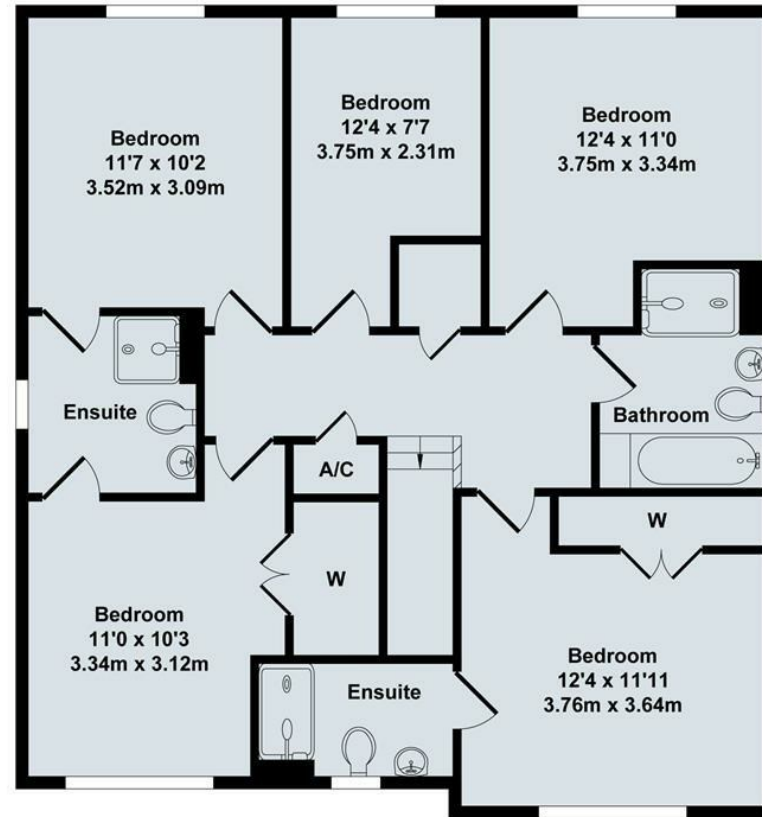


Council Tax Band: G





Ground Floor



First Floor




Total Approx. Floor Area 1873 Sq.Ft. (174.0 Sq.M.)

All items illustrated on this plan are included in the "Total Approx Floor Area"





Energy Efficiency Rating

	Current	Potential
Very energy efficient - lower running costs		
(92 plus) A		93
(81-91) B	85	
(69-80) C		
(55-68) D		
(39-54) E		
(21-38) F		
(1-20) G		
Not energy efficient - higher running costs		
England & Wales	EU Directive 2002/91/EC	



Directions

Viewings

Viewings by arrangement only. Call 01235 773999 to make an appointment.

Council Tax Band

G