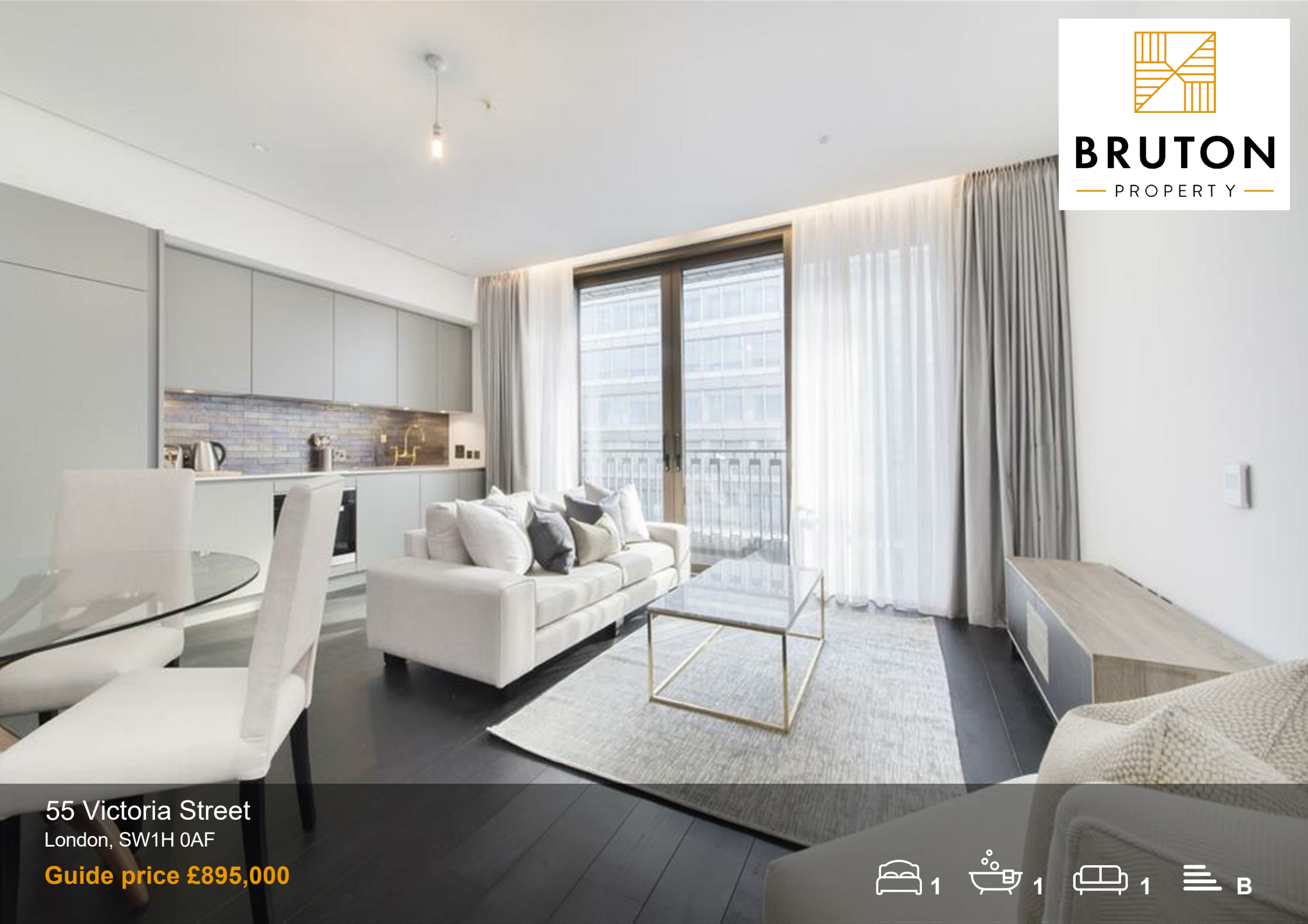




BRUTON
— PROPERTY —



55 Victoria Street
London, SW1H 0AF

Guide price £895,000



55 Victoria Street

London, SW1H 0AF

Discover this beautifully presented one-bedroom / studio apartment (611 sq ft) set within the prestigious 55 Victoria Street development in the heart of Westminster.

The apartment offers bright, modern living with impressive 2.9m ceiling heights and floor-to-ceiling windows that flood the space with natural light. A private balcony provides valuable outdoor space in this prime Central London location.

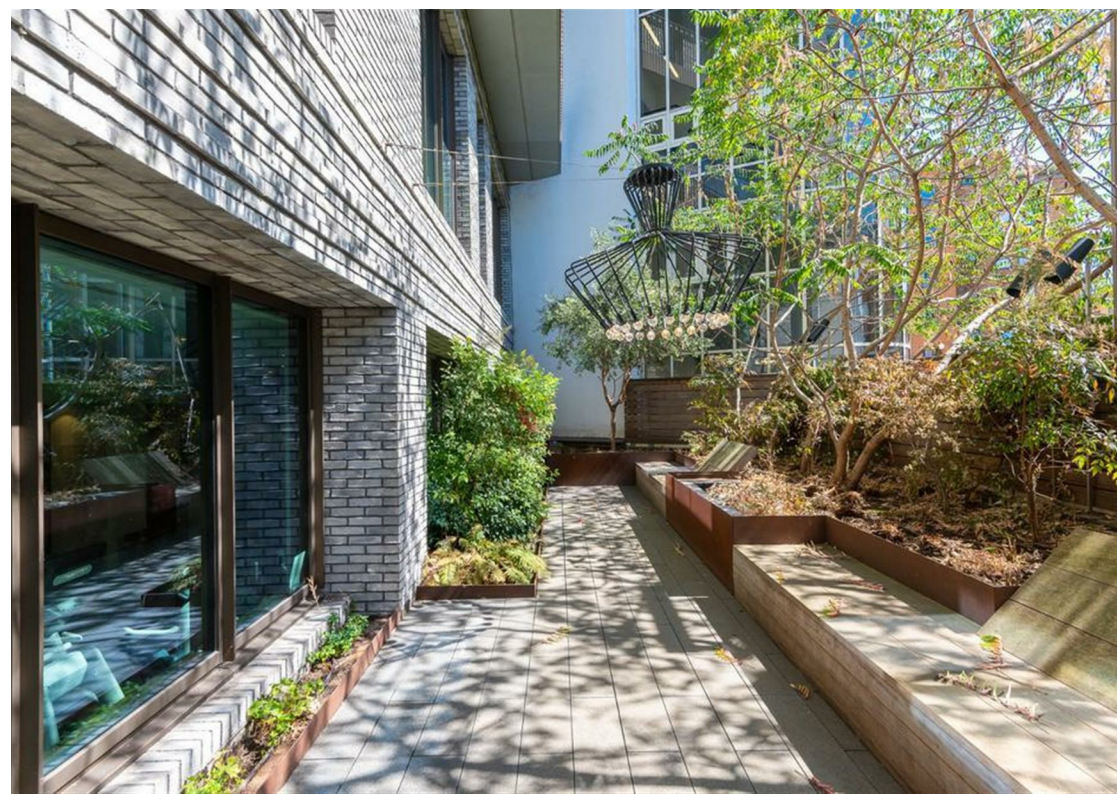
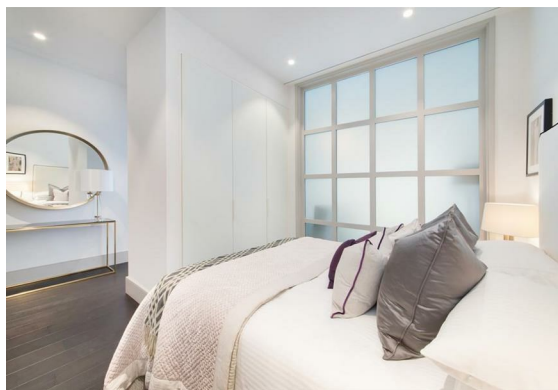
Inside, you'll find a sleek, fully integrated kitchen with high-quality appliances, a stylish contemporary bathroom, and a discreet utility cupboard with washer/dryer. The well-planned 611 sq ft layout maximises both comfort and functionality, making it ideal as a London home, pied-à-terre or investment opportunity.

Residents benefit from exceptional on-site amenities, including a 24-hour concierge, fully equipped gym, and a stunning sky garden offering impressive city views.

Perfectly positioned just moments from Buckingham Palace, St James's Park, and Green Park, the development is also within easy reach of the boutiques and restaurants of Mayfair and St James's.

Transport links

- St James's Park Underground Station (Circle & District Lines) – approx. 0.1 miles
- Victoria Station** (Victoria Line &





National Rail) – approx. 0.4 miles
 • Westminster Underground Station (Jubilee Line) – approx. 0.5 miles

An outstanding opportunity to acquire a stylish home in one of London's most sought-after central locations.

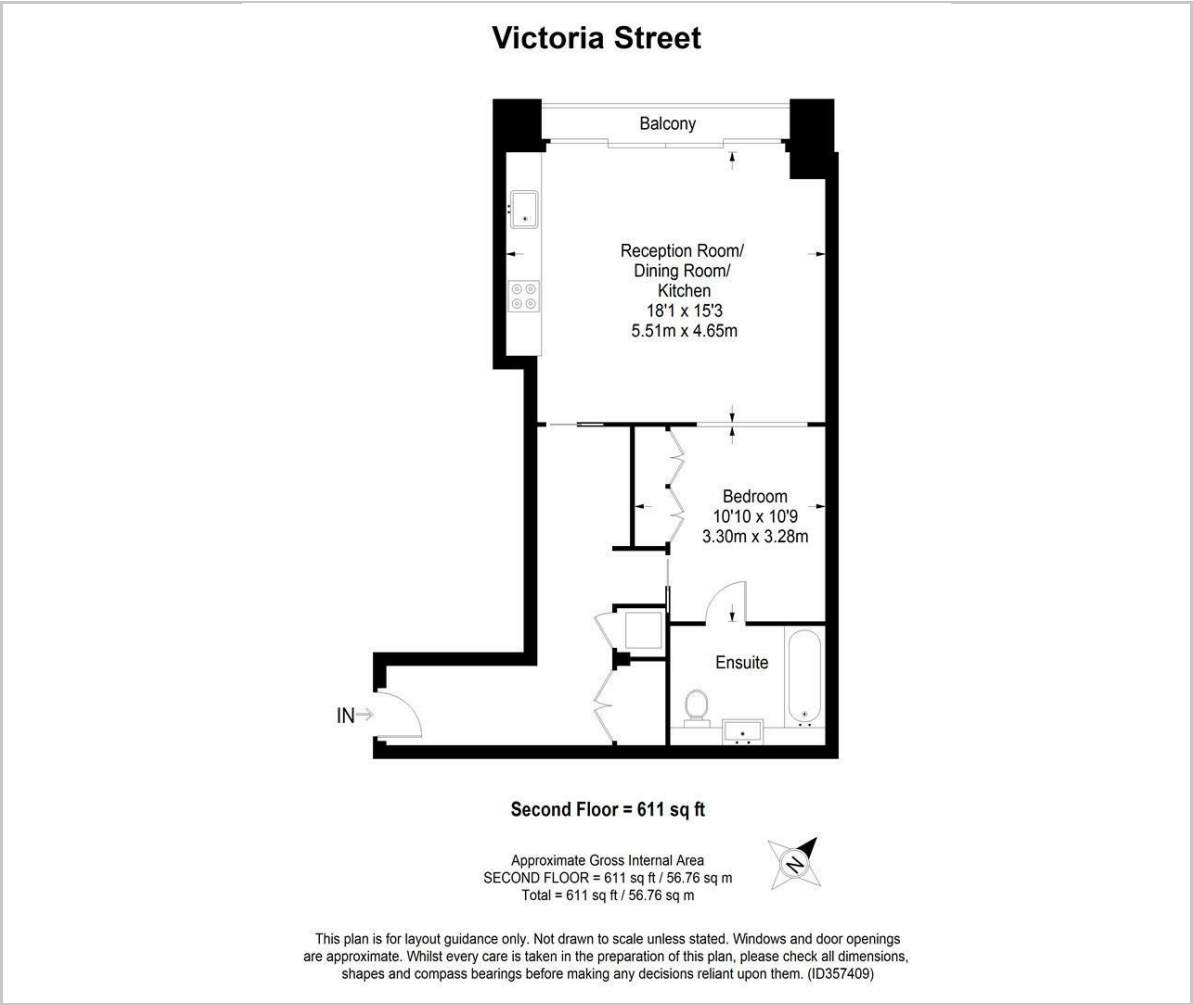


Size: 611 SQ FT / 56.76 SqM
 Service charge: £7,241.28 per annum 2024/2025
 Ground rent: £500 per annum 2024/2025
 Leasehold - 986 years remaining
 EPC rating: B
 Council Tax: Westminster



?? Contact Bruton Property
 ?? +44 20 7459 4696
 ?? info@brutonproperty.co.uk
 ?? www.brutonproperty.co.uk


Floor Plan




Viewing

Please contact our Bruton Property Office on 0207 459 4696 if you wish to arrange a viewing appointment for this property or require further information.

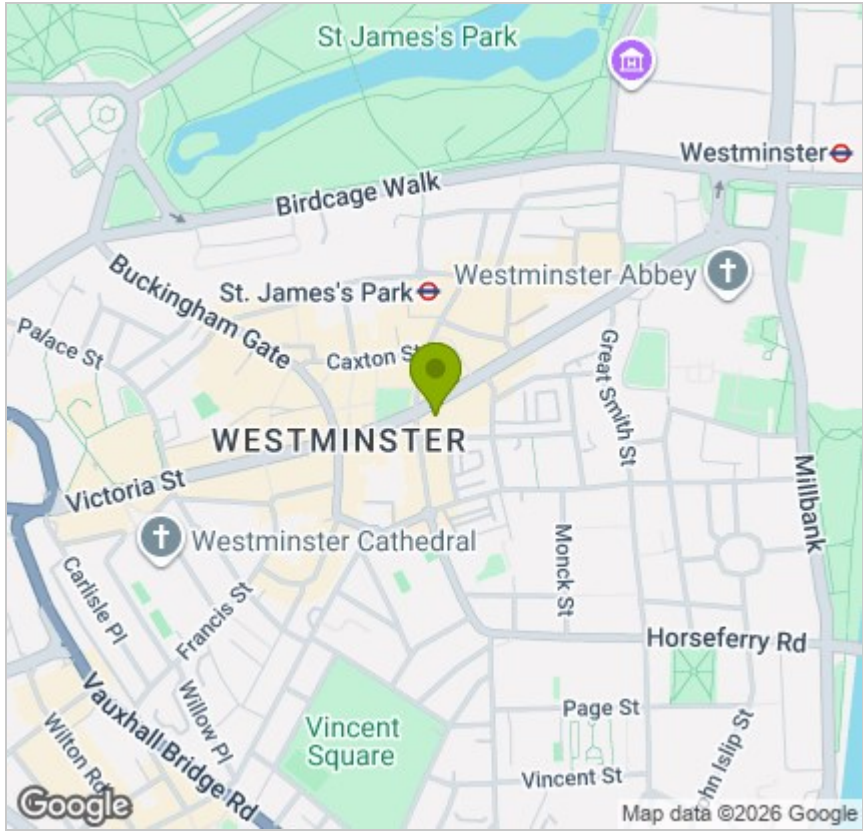
These particulars, whilst believed to be accurate are set out as a general outline only for guidance and do not constitute any part of an offer or contract. Intending purchasers should not rely on them as statements of representation of fact, but must satisfy themselves by inspection or otherwise as to their accuracy. No person in this firms employment has the authority to make or give any representation or warranty in respect of the property.

 **20 Lees Place, Mayfair**
London, W1K 6LP

 **020 7459 4696**

 **info@brutonproperty.co.uk**
www.brutonproperty.co.uk

Area Map



Energy Efficiency Graph

