



17 Cumberland Gardens, Castle Bytham
£525,000

 **NEWTON FALLOWELL**

17 Cumberland Gardens

Castle Bytham, Grantham

This impressive detached three bedroom bungalow is situated in a sought-after village location, offering a wonderful blend of spacious accommodation and comfortable living.

The property provides three generously sized double bedrooms, including a principal bedroom with en-suite facilities, as well as a modern family bathroom and a separate W.C for added convenience. The study and separate dining area offer flexibility for living arrangements and an additional feeling of space in an already spacious property.

The welcoming entrance hall leads to three versatile reception rooms, offering ample space for relaxation, entertaining, or working from home. The living room features a striking fireplace, while the well-equipped kitchen is complemented by a separate utility room. Throughout the bungalow, large windows allow for plenty of natural light, creating a bright and airy atmosphere. The property also benefits from a double garage with electric doors, providing secure parking and additional storage space.

Outside, the bungalow enjoys a private rear garden that is mainly laid to lawn with mature shrubs and flower borders (ideal for those who appreciate outdoor living). A spacious patio area offers the perfect spot for al fresco dining or summer gatherings with friends and family. The front of the property is attractively landscaped, with a driveway providing off-road parking for several vehicles and easy access to the double garage. The garden is fully enclosed, ensuring privacy and security, and offers scope for keen gardeners to personalise and enjoy.





Kitchen

14' 3" x 14' 4" (4.35m x 4.37m)

Integral appliances

Dining room

10' 4" x 11' 7" (3.16m x 3.54m)

Living room

21' 6" x 11' 7" (6.55m x 3.54m)

Feature fireplace Bay window -1.84x1.06

Hall

20' 4" x 5' 5" (6.19m x 1.64m)

Study

14' 3" x 7' 4" (4.34m x 2.23m)

In built storage

W.C

8' 5" x 3' 2" (2.57m x 0.96m)

Bedroom 1

14' 3" x 12' 0" (4.35m x 3.66m)

In built storage and es 3.23m length from es wall

En-Suite

8' 6" x 5' 8" (2.60m x 1.72m)

Bathroom

8' 7" x 6' 5" (2.61m x 1.96m)

4 piece

Bedroom two

10' 10" x 8' 5" (3.30m x 2.56m)

In built storage - front view

Bedroom 3

10' 10" x 8' 7" (3.29m x 2.62m)

In built storage - rear view

Second part of hall

12' 6" x 3' 1" (3.80m x 0.95m)



Kitchen

14' 3" x 14' 4" (4.35m x 4.37m)

Integral appliances

Dining room

10' 4" x 11' 7" (3.16m x 3.54m)

Living room

21' 6" x 11' 7" (6.55m x 3.54m)

Feature fireplace Bay window -1.84x1.06

Hall

20' 4" x 5' 5" (6.19m x 1.64m)

Study

14' 3" x 7' 4" (4.34m x 2.23m)

In built storage

W.C

8' 5" x 3' 2" (2.57m x 0.96m)

Bedroom 1

14' 3" x 12' 0" (4.35m x 3.66m)

In built storage and es 3.23m length from es wall

En-Suite

8' 6" x 5' 8" (2.60m x 1.72m)

Bathroom

8' 7" x 6' 5" (2.61m x 1.96m)

4 piece

Bedroom two

10' 10" x 8' 5" (3.30m x 2.56m)

In built storage - front view

Bedroom 3

10' 10" x 8' 7" (3.29m x 2.62m)

In built storage - rear view

Second part of hall

12' 6" x 3' 1" (3.80m x 0.95m)





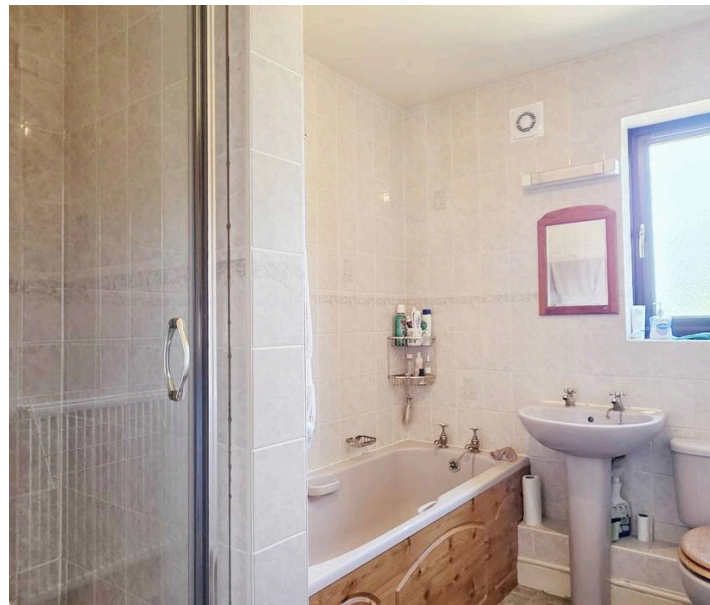
REAR GARDEN

DOUBLE GARAGE

2 Parking Spaces

DRIVEWAY

3 Parking Spaces





REAR GARDEN

DOUBLE GARAGE

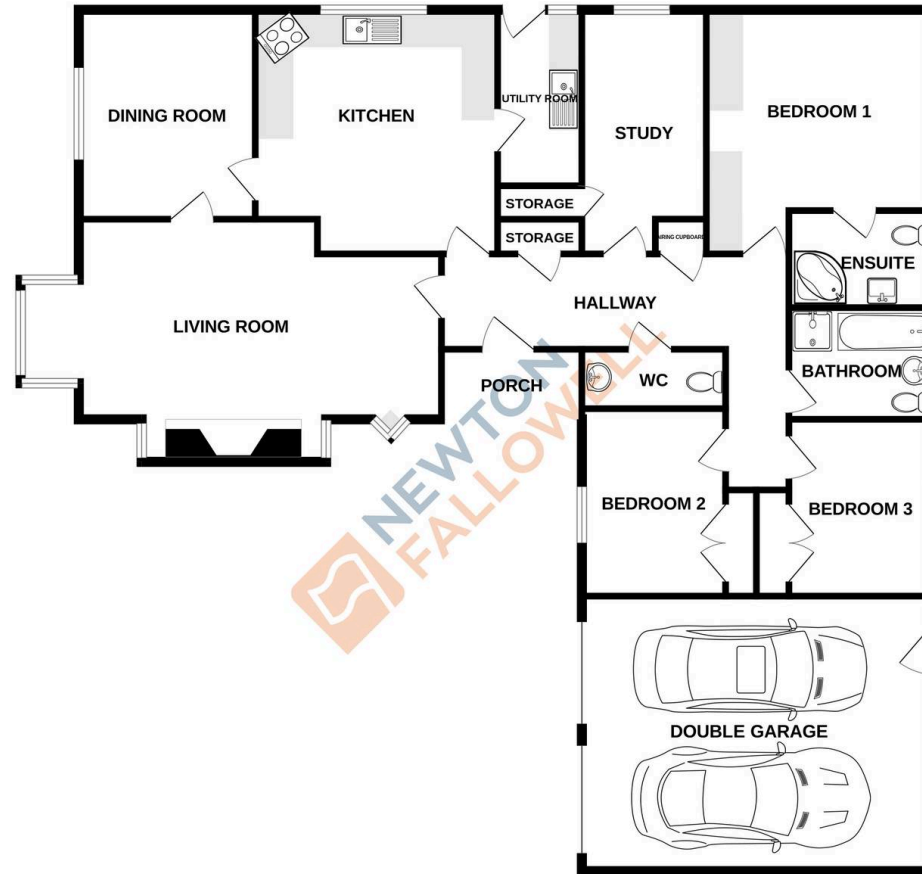
2 Parking Spaces

DRIVEWAY

3 Parking Spaces



GROUND FLOOR
1790 sq.ft. (166.3 sq.m.) approx.



TOTAL FLOOR AREA : 1790 sq.ft. (166.3 sq.m.) approx.

Whilst every attempt has been made to ensure the accuracy of the floorplan contained here, measurements of doors, windows, rooms and any other items are approximate and no responsibility is taken for any error, omission or mis-statement. This plan is for illustrative purposes only and should be used as such by any prospective purchaser. The services, systems and appliances shown have not been tested and no guarantee as to their operability or efficiency can be given.
Made with Metropix 4/2025

Newton Fallowell - Bourne

Newton Fallowell, 2 North Street - PE10 9EA

01778 422567 · bourne@newtonfallowell.co.uk · newtonfallowell.co.uk/bourne