

Property ref: 179371

Fairhaven Drive, Reading, RG2 6BG

£1,350 PCM

HASLAM'S
Lettings



Situated within the popular Green Park development, this attractive apartment offers comfortable and convenient living, ideal for professional singles or couples alike. The property features a bright and welcoming living space with ample room for both relaxing and dining, complemented by a modern fitted kitchen offering a good range of storage and worktop space. The property also benefits from an allocated parking space and outside patio area. Reading Borough Council tax band C.

Available Now

- One double bedroom ground floor apartment
- Fully fitted kitchen with appliances; Furnished
- Modern bathroom with shower over bath; Patio area
- Great motorway access; Green Park train station on site
- Allocated parking; Gas central heating
- EPC rating B; Managed by HASLAM'S

*Fees For Assured Shorthold Tenancies: when you rent a property from us you will be required to pay a sum equivalent to one weeks' rent for a holding deposit. Upon successful application, this amount will be off set against your first months' rent. You will also be required to pay a security deposit equivalent to 5 weeks' rent which will be held and protected in line with Deposit legislation. For more information about our fees please visit: www.haslams.net
Fees for all other tenancies (Non Housing Act Tenancies / Company Lets): when you rent a property from us we will charge you a one-off fee per property. This charge is the equivalent of 15 days of the monthly rental charge (+VAT) with a minimum fee of £450 (inc.VAT) up to a maximum of £650 (inc.VAT). Other fees may apply depending on your circumstances.

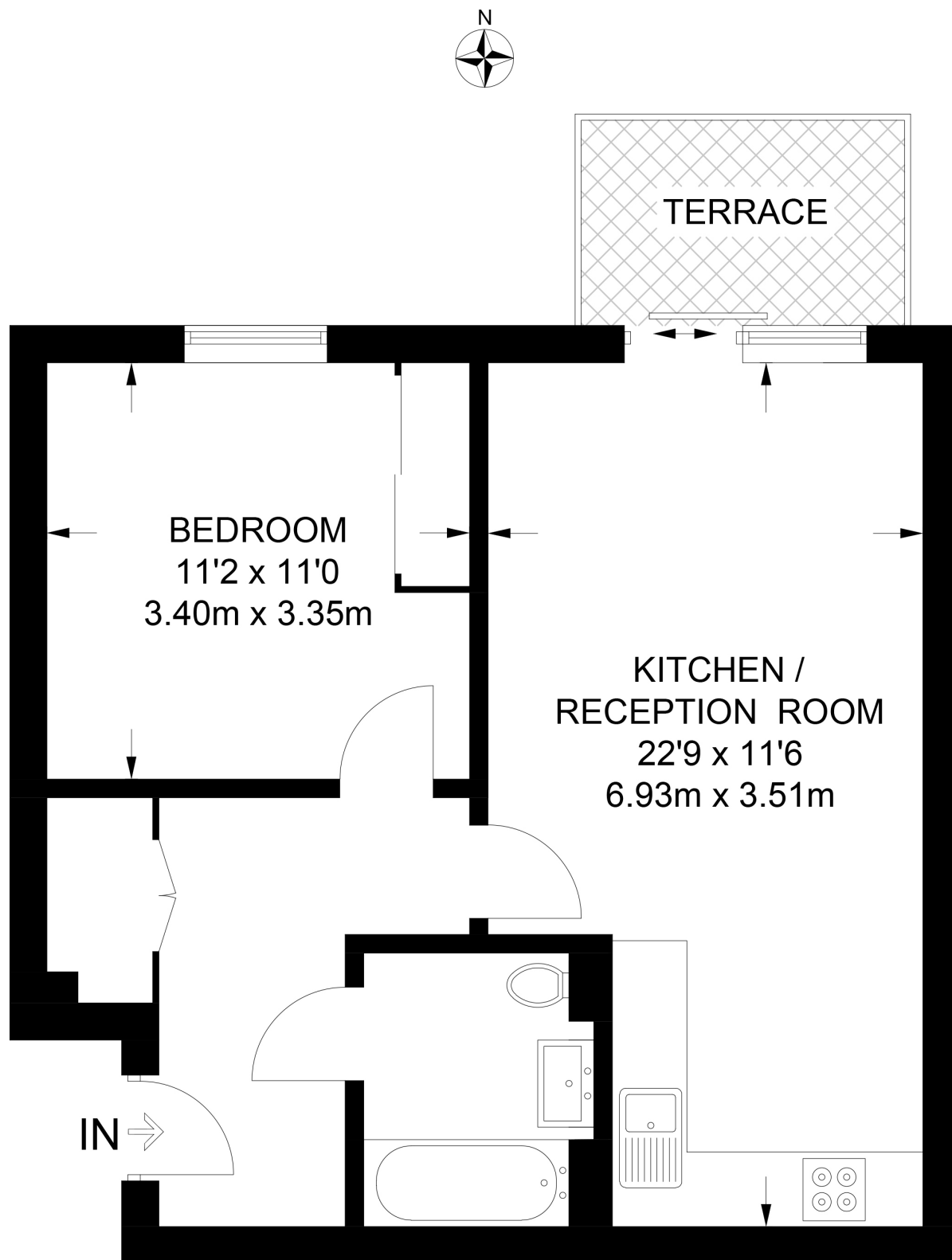
0118 960 1055

lettings@haslams.net www.haslams.net

Haslams Estate Agents Ltd, 159 Friar Street, Reading, Berkshire, RG1 1HE

Broadband/Mobile Info: Connections available. For an indication of specific speeds and supply of Broadband and Mobile, we advise applicants go to the Ofcom website Broadband and Mobile Coverage Checker.





GROUND FLOOR

APPROXIMATE GROSS INTERNAL AREA
513 SQ FT / 47.7 SQ M

This plan has been drawn for illustrative and identification purposes only.