

# Castles

ASKING PRICE

£430,000

Totteridge Road

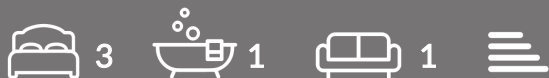
Enfield, EN3 6NE Freehold





## PROPERTY SUMMARY

An older style 3 bedroom semi-detached family house located off the Hertford Road within easy reach of local schools and shops and less than 0.5m of Enfield Lock Train Station (serving London Liverpool Street). Viewing is recommended.

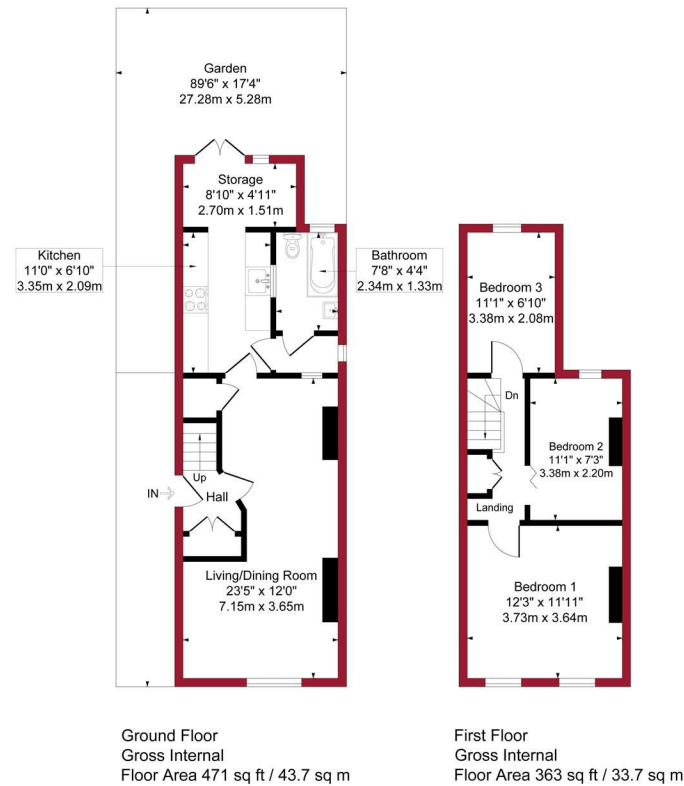




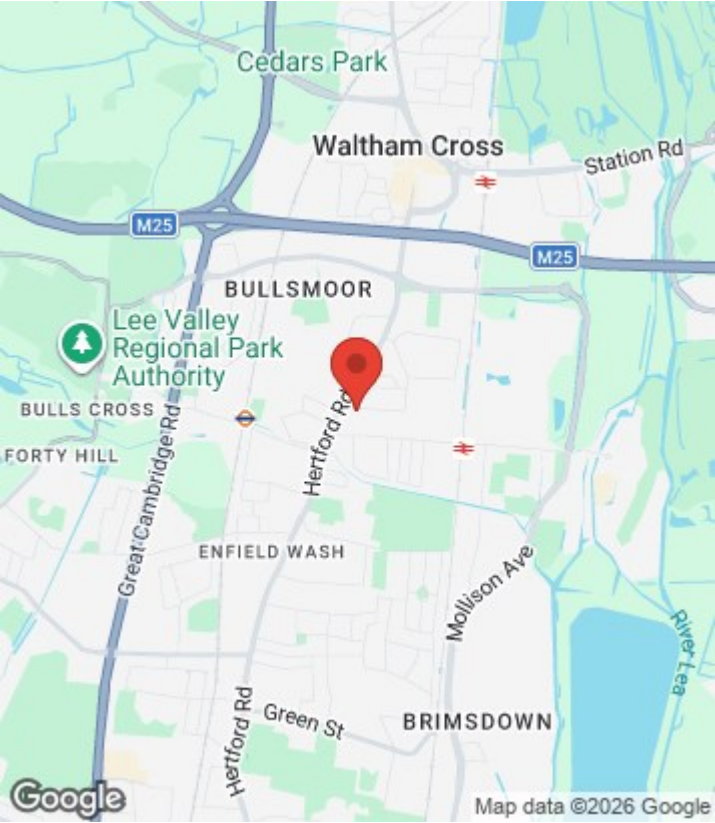




Totteridge Road, Enfield, EN3      Approximate Gross Internal Area = 834 sq ft / 77.4 sq m



For a guide to the area  
please scan this code for  
more information



House - Semi-Detached  
Freehold  
**Council:** Enfield  
**Council Tax Band:** D

Agents Note: Whilst every care has been taken to prepare these particulars, they are for guidance purposes only. All measurements are approximate and are for general guidance purposes only and whilst every care has been taken to ensure their accuracy, they should not be relied upon and potential buyers/tenants are advised to recheck the measurements



**OFFICE ADDRESS**  
243 - 245 Hertford Road  
Enfield  
London  
EN3 5JJ

**OFFICE DETAILS**  
0208 804 8000  
enfield@castles.london  
<https://www.castles.london>

