

Property ref: 179597

Herbert Gardens, Theale, Reading, RG7 5GT

£1,600 PCM

HASLAM'S
Lettings



A brand new two bedroom apartment set in the rural village of Theale, just a short walk from the village centre and station which provides connectivity to Reading town centre and London. The location provides easy access to independent cafés, pubs, and popular eateries.

West Berkshire Council tax band TBC.

Water supply: Mains

Drainage info: Mains

Electricity supply: Mains

Gas supply: Mains

Broadband/Mobile Info: Connections available. For an indication of specific speeds and supply of Broadband and Mobile, we advise applicants go to the Ofcom website Broadband and Mobile Coverage Checker.

- Two double bedrooms; Master with en-suite shower room
- Further family-sized bathroom
- Fully fitted kitchen with appliances
- Gas central heating; EPC rating A
- Allocated parking
- Unfurnished; Managed by LANDLORD

Available 20/04/2026

will be required to pay a sum equivalent to one weeks' rent for a holding deposit. Upon successful application, this amount will be off set against your first months' rent. You will also be required to pay a security deposit equivalent to 5 weeks' rent which will be held and protected in line with Deposit legislation. For more information about our fees please visit: www.haslams.net
Fees for all other tenancies (Non Housing Act Tenancies / Company Lets): when you rent a property from us we will charge you a one-off fee per property. This charge is the equivalent of 15 days of the monthly rental charge (+VAT) with a minimum fee of £450 (inc.VAT) up to a maximum of £650 (inc.VAT). Other fees may apply depending on your circumstances.

0118 960 1055

lettings@haslams.net www.haslams.net

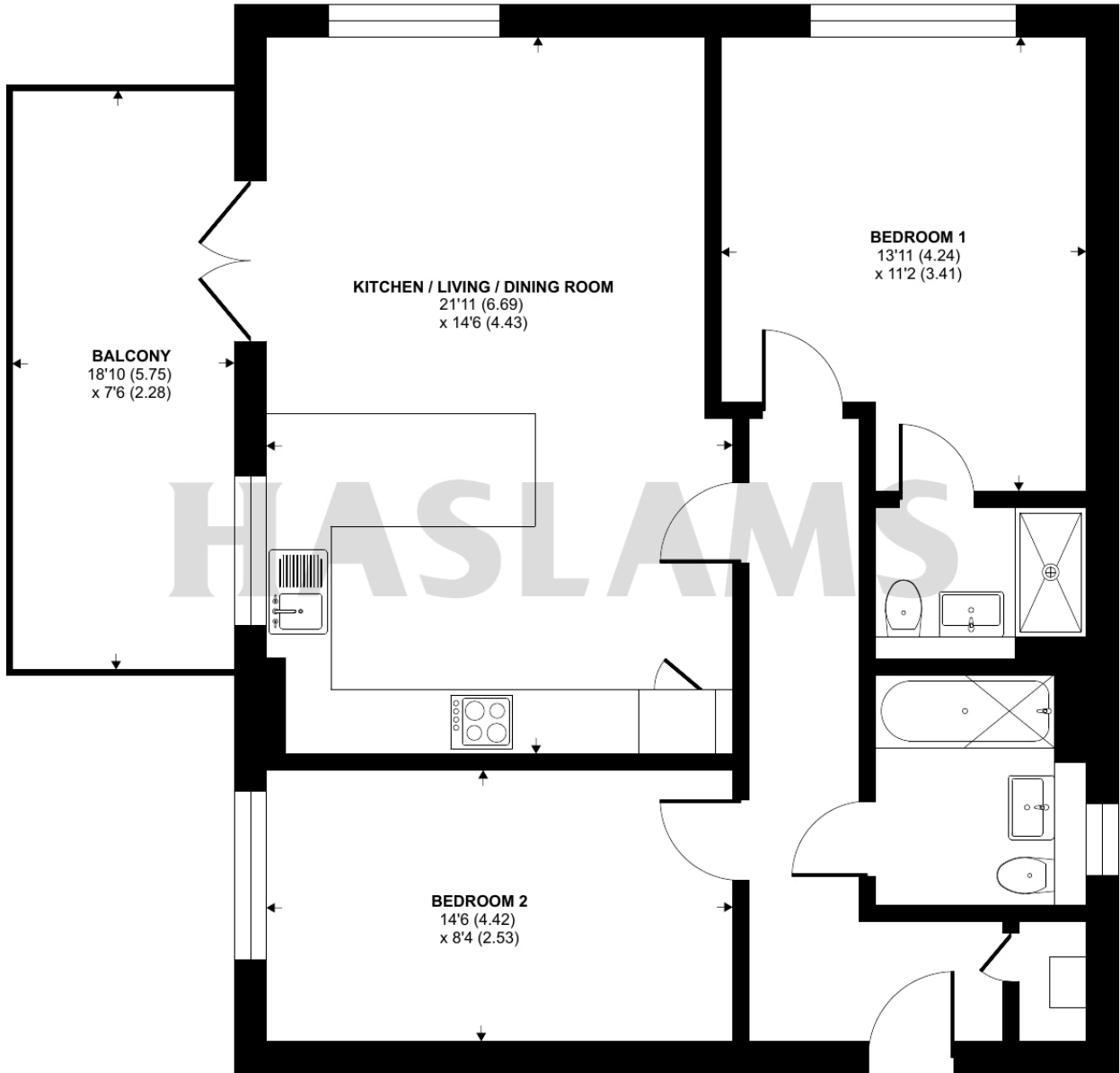
Haslams Estate Agents Ltd, 159 Friar Street, Reading, Berkshire, RG1 1HE



Herbert Gardens, Theale, Reading, RG7

Approximate Area = 772 sq ft / 71.7 sq m

For identification only - Not to scale



FIRST FLOOR



Floor plan produced in accordance with RICS Property Measurement 2nd Edition, Incorporating International Property Measurement Standards (IPMS2 Residential). © nchecon 2026. Produced for Haslam's. REF: 1434127