



Guide Price
£650,000

Freehold

5x  3x  2x 

**Nursery Gardens,
Faversham, Kent, ME13**

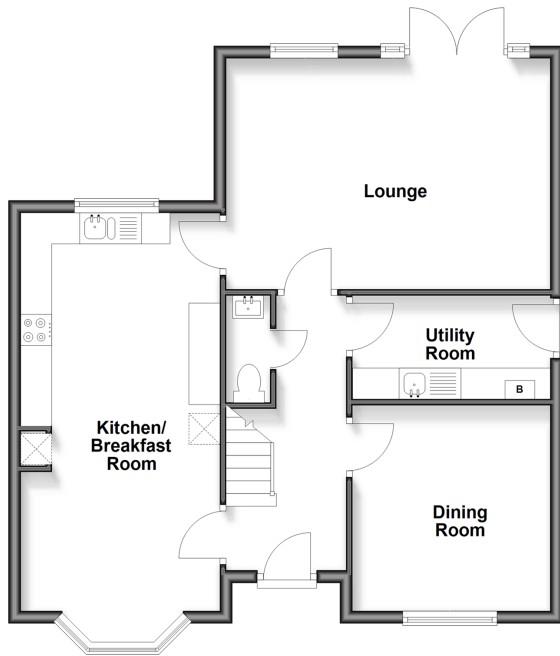
OVER 60?

Secure this property
for up to **59% less!**

Wards
Helping you move forwards

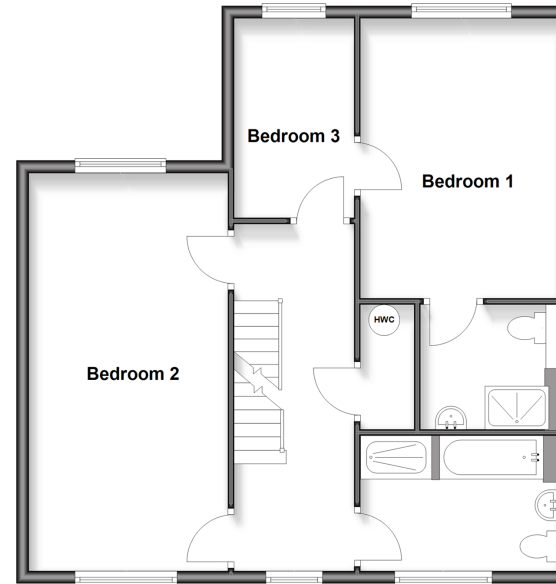
Ground Floor

Approx. 67.0 sq. metres (721.1 sq. feet)



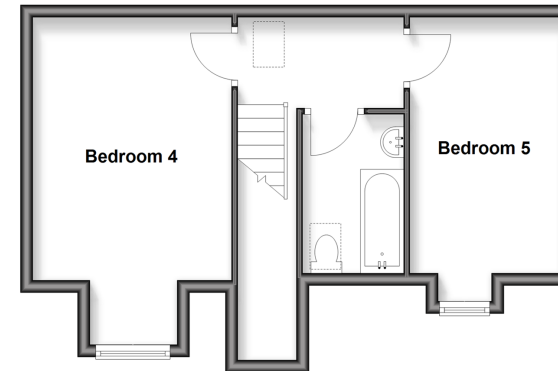
First Floor

Approx. 68.1 sq. metres (733.4 sq. feet)



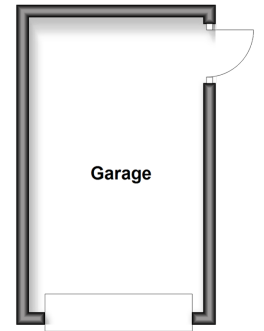
Second Floor

Approx. 39.0 sq. metres (420.1 sq. feet)



Outbuilding

Approx. 13.5 sq. metres (145.2 sq. feet)



Accommodation

GROUND FLOOR

Entrance Hall
Dining Room: 10'7 x 10'2 (3.23m x 3.10m)
Kitchen/Diner: 21'0 x 10'2 (6.41m x 3.10m)
Utility Room: 10'2 x 5'5 (3.10m x 1.65m)
Lounge: 17'2 x 12'3 (5.24m x 3.74m)

FIRST FLOOR

Landing
Bedroom 1: 21'1 x 10'1 (6.43m x 3.08m)
Bedroom 2: 14'9 x 10'5 (4.50m x 3.18m)
En-Suite Shower Room
Bedroom 3: 10'6 x 6'7 (3.20m x 2.01m)
Family Bathroom

SECOND FLOOR

Landing
Bedroom 4: 15'3 x 8'3 (4.65m x 2.52m)
Bedroom 5: 17'6 x 10'3 (5.34m x 3.13m)
Bathroom

OUTBUILDING

Garage

OUTSIDE

Front & Rear Gardens
Parking



Main features

- Substantial house, perfect for a sizeable family
- Located on a popular residential development on the outskirts of the town centre
- Easy walking distance to town centre shops and mainline station
- Short distance to Brogdale Farm with popular cafe
- Close to countryside walks



Nearest Schools

Primary Schools: Davington Primary 0.9 miles, Sheldwich Primary 1.2 miles

Secondary Schools: The Abbey School 3.5 miles, Queen Elizabeth's Grammar School 4.2 miles



Transport Information

Train Stations: Faversham 3.6 miles, Selling 4.1 miles, Chilham 6.6 miles



Address

Nursery Gardens, Faversham, Kent, ME13



Directions

For directions to this property please contact us.



Wards
Helping you move forwards

Call Faversham Branch 01795 535517 ■ wardsof Kent.co.uk



- Legal advice should be taken to verify fixtures/fittings, planning, alterations and/or lease details
- Appliances & services are untested, dimensions are approximate and floor plans are not to scale
- Through a Homewise Home For Life Plan people aged 60+ can secure this property for up to 59% less, by purchasing a Lifetime Lease

EPC RATING	CURRENT:	POTENTIAL:
	B(37)	A(94)

10832237/20260307/JB/PJ