

PCM

£2,800 PCM

Commercial Road

London, E1 1LF

Offered for rent is this stylish 2 double bedroom apartment set within a modern development just moments from Aldgate East Station.

The property has been renovated to an extremely high standard and features a contemporary open plan kitchen with breakfast bar which open up to a bright and spacious reception room with seating and dining area which can also be used as a 'work from home' space.

There are 2 double bedrooms and a modern fitted family bathroom.

The development features a on-site concierge service, lift facilities, communal roof terrace and a residents gymnasium (additional charges).

Located just a few moments from Brick Lane with Spitalfields Market just a few moments walk.

Transport links include Aldgate East, Liverpool Street and Whitechapel Stations which are all within walking distance as well as a number of bus routes available from Commercial Road.

Offered furnished and available from the end of June.

5 weeks deposit: £3230

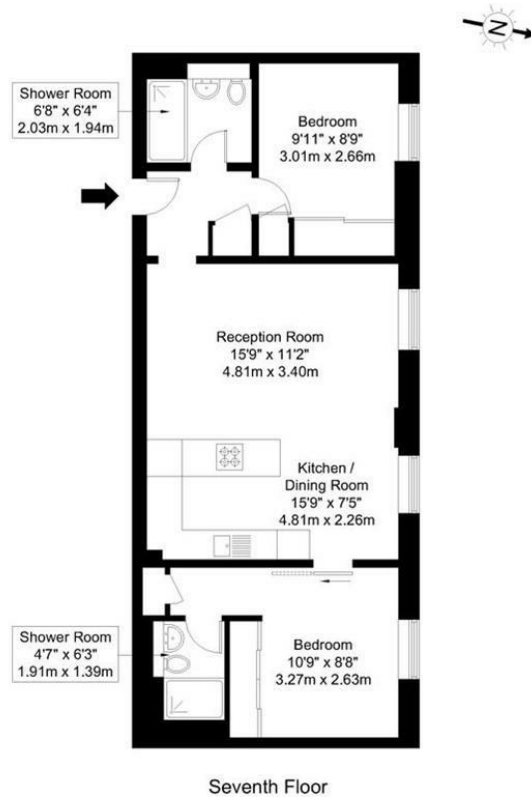
Council Tax: Band D





Commercial Road, E1 1LF

Approx Gross Internal Area = 63 sq m / 678 sq ft



Ref:

Copyright **BLEU
PLAN**

The Floor plan is not to scale and measurements and areas shown are approximate and therefore should be used for illustrative purposes only. The plan has been prepared in accordance with the RICS code of Measuring Practice and whilst we have confidence in the information produced it must not be relied on. Maximum lengths and widths are represented on the floor plan. If there is any aspect of particular importance, you should carry out or commission your own inspection of the property.

Copyright @ BLEUPLAN

Energy Efficiency Rating		
	Current	Potential
<i>Very energy efficient - lower running costs</i>		
(92 plus) A		
(81-91) B		
(69-80) C		
(55-68) D	65	66
(39-54) E		
(21-38) F		
(1-20) G		
<i>Not energy efficient - higher running costs</i>		
England & Wales	EU Directive 2002/91/EC	

Agents Note: Whilst every care has been taken to prepare these particulars, they are for guidance purposes only. All measurements are approximate and are for general guidance purposes only and whilst every care has been taken to ensure their accuracy, they should not be relied upon and potential buyers/tenants are advised to recheck the measurements

OFFICE ADDRESS
88 Cheshire Street
London
E2 6EH

OFFICE DETAILS
0207 739 6969
info@peachproperties.com
www.peachproperties.com