



**POOLE
TOWNSEND**

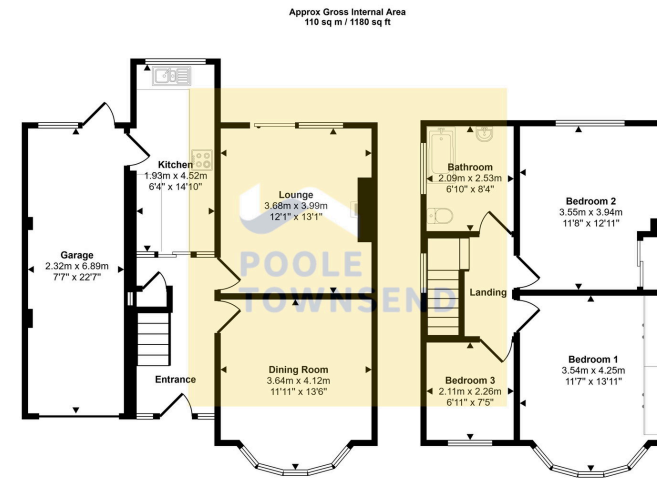
29 Hornedale Avenue,
£240,000

3 1 2



- 3 Bed Semi-Detached
- Close To Local Amenities
- No Upper Chain
- A Lawned Front Garden
- An Open Driveway And Attached Garage
- A Bay Fronted Dining Room
- A Lounge With Sliding Patio Doors
- An Extended Kitchen
- A Spacious Family Bathroom
- A Large Well Established Garden



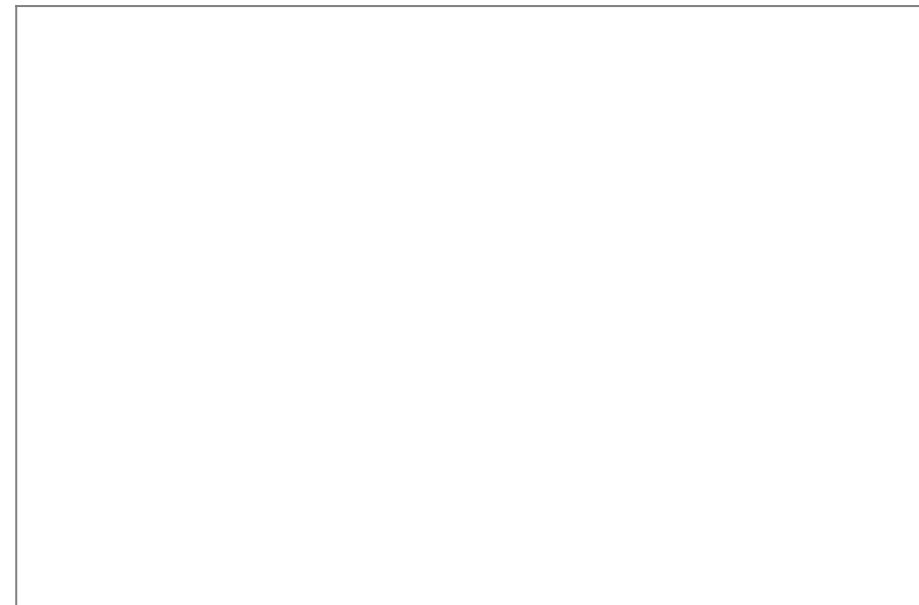


Ground Floor
Approx 64 sq m / 694 sq ft

First Floor
Approx 45 sq m / 486 sq ft

This floorplan is only for illustrative purposes and is not to scale. Measurements of rooms, doors, windows, and any items are approximate and no responsibility is taken for any error, omission or mis-statement. Icons of items such as bathroom suites are representations only and may not look like the real items. Made with Made Snappy 360.

NEW! Situated in a desirable residential area close to local schools, Barrow's Central Park, and the town centre, this extended semi-detached home offers spacious family accommodation. The property benefits from a lawned front garden, open driveway, and attached garage, with internal accommodation comprising a welcoming hallway, bay-fronted dining room, and a lounge with fireplace and sliding patio doors opening onto the garden. The extended kitchen provides a range of fitted units, integrated cooking appliances, and access to the garage for additional utility space. To the first floor are three bedrooms, including two doubles with fitted furniture and a single bedroom, along with a spacious family bathroom. Externally, the rear garden is a standout feature, offering a private and well-maintained space with patio, lawn, mature planting, shed, and screening. Further benefits include gas-fired central heating and no upper chain.



Visit us at
www.pooletownsend.co.uk
enquiries@pooletownsend.co.uk

We are open
 Monday – Friday 9.00 – 5.00
 Saturday 9.00 – 1.00

Barrow 01229 811811
 Ulverston 01229 588111
 Grange 015395 33316
 Kendal 01539 734455
 Milnthorpe 015395 62044