



Chaseley Field Mansions

Salford



£210,000

Chaseley Field Mansions

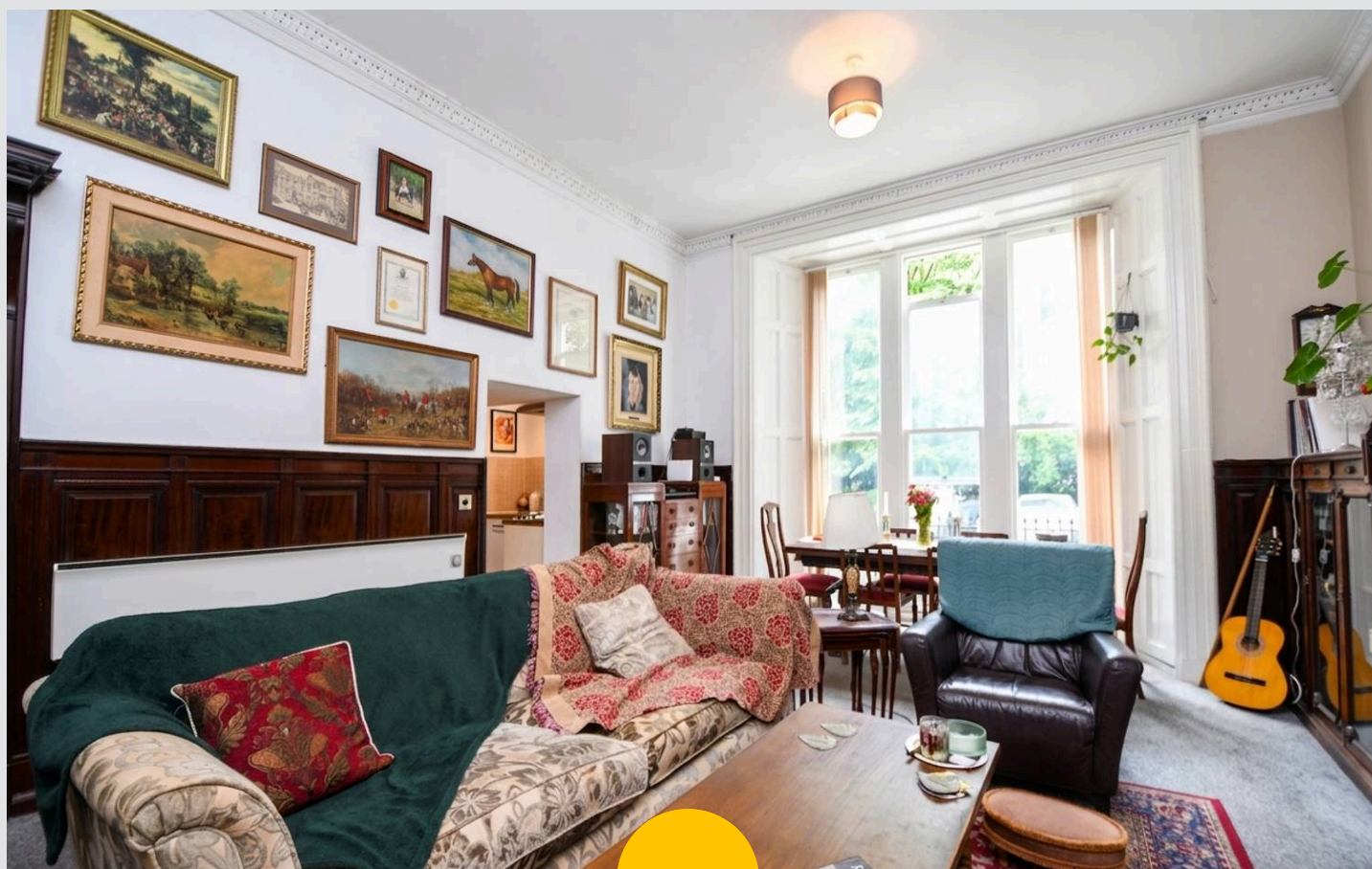
Chaseley Road, Salford

****STUNNING TWO DOUBLE BEDROOM DUPLEX APARTMENT COMING TO THE MARKET CHAIN FREE****
19TH CENTURY PROPERTY CONVERTED INTO STUNNING AND EXCLUSIVE APARTMENTS!!

Council Tax band: D

Tenure: Leasehold

- Spacious, two double bedroom duplex apartment coming to the market CHAIN FREE!
- Stunning 19th century grade two listed converted mansion, full of character and original features!
- Featuring a spacious family lounge with stunning original features and flooded with natural light
- Modern fitted kitchen
- Contemporary three piece bathroom suite and W.C.
- Gated entry and secure communal parking
- Two double bedrooms
- Fantastic first time buy!
- Situated close by to fantastic amenities and transport links



HILLS



Entrance Hallway

11' 2" x 10' 7" (3.40m x 3.23m)

Lounge

21' 11" x 14' 9" (6.67m x 4.49m)

Kitchen

15' 6" x 9' 3" (4.72m x 2.82m)

WC

4' 2" x 5' 1" (1.26m x 1.55m)

Bedroom One

16' 5" x 14' 7" (5.01m x 4.44m)

Bedroom Two

13' 5" x 14' 1" (4.08m x 4.30m)

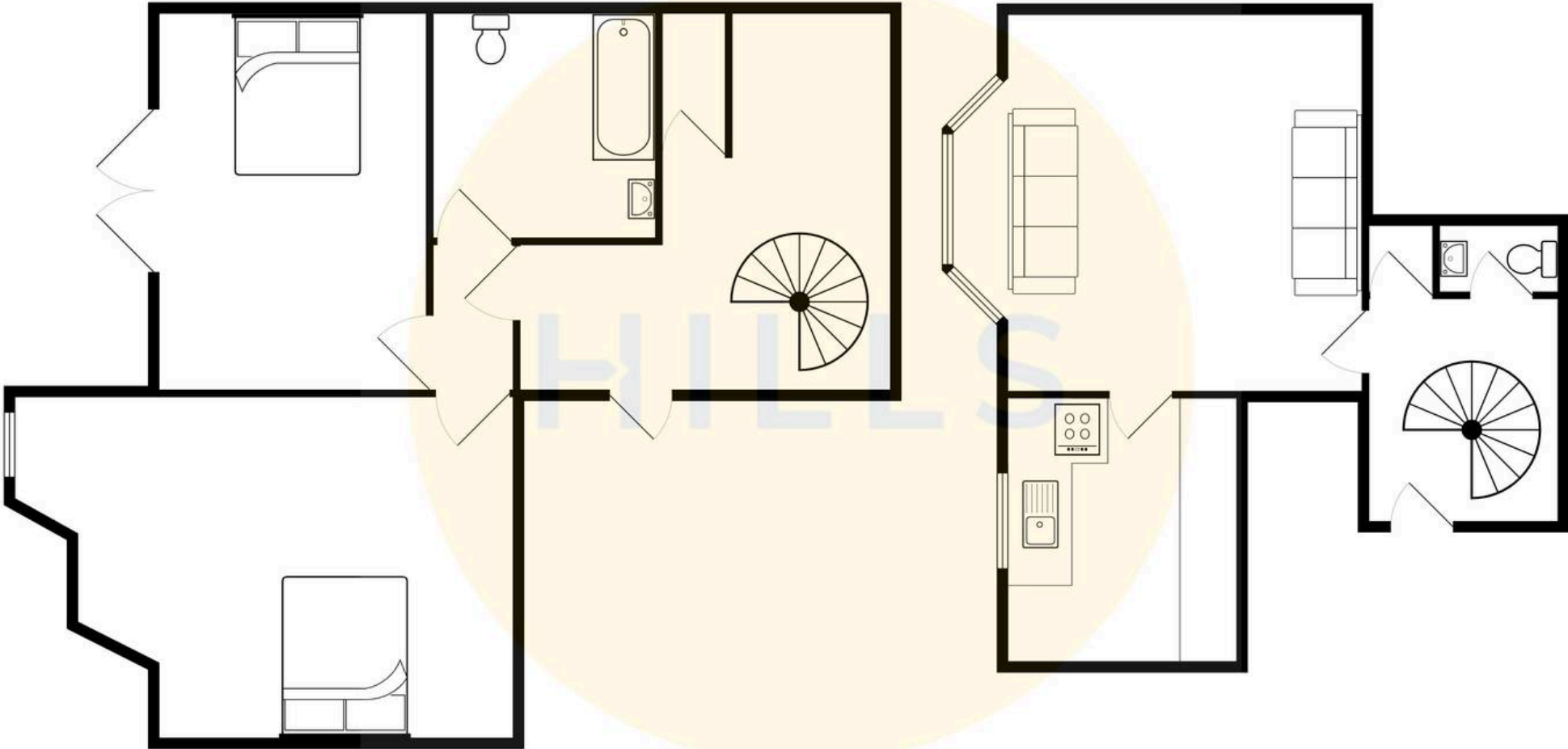
Bathroom

9' 1" x 4' 9" (2.77m x 1.46m)



HILLS







Hills | Salfords Estate Agent

Hills Residential, Sentinel House Albert Street – M30 0SS

0161 707 4900

sales@hills.agency

www.hills.agency/



By law, we are required to conduct anti-money laundering checks on all potential buyers and sellers. In line with HMRC guidelines, our trusted partner, Coadjute, will securely manage these checks on our behalf. A non-refundable fee of £45 + VAT per person will apply, and Coadjute will handle the payment. Once an offer is accepted, Coadjute will send a secure link for you to complete the biometric checks. These checks must be completed before we can send the memorandum of sale to all parties. PLEASE NOTE: The Agent has not tested any equipment, fixtures, fittings or services so cannot verify that they are in working order or fit for the purpose. References to the properties tenure are based on information supplied by the seller. You are advised to check the availability of this property before travelling any distance to view. Every effort has been made to ensure these particulars are correct and not misleading but their accuracy is not guaranteed nor do they form part of any contract.