



## Yew Tree Road, W12

### £1,150,000

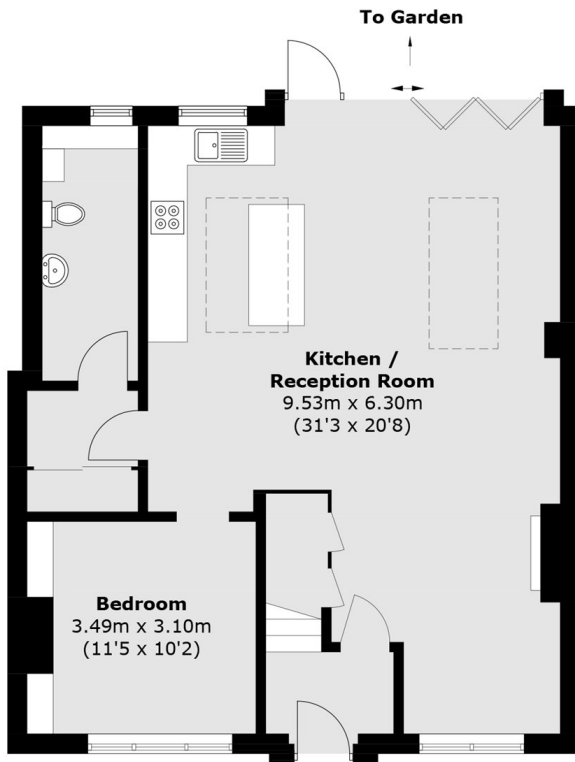
A beautifully renovated and extended four-bedroom freehold home arranged over three floors. The property offers generous living space including two reception rooms, a modern kitchen with bi-folding doors opening onto a private garden, and a separate utility room. There are two well-appointed bathrooms, and the home also benefits from off-street parking. Finished to a high standard throughout, this spacious property is ideal for modern family living.

Situated close to East Acton Station (Central Line) and other amenities including Westfield Shopping Centre and easy access to the A40.

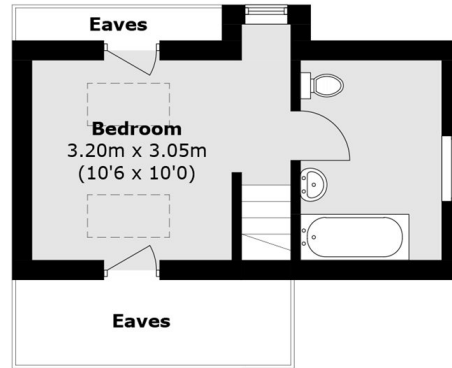
### Features

- End Of Terrace
- Off Street Parking
- Four Double Bedrooms
- Utility Room & W/C
- Two Bathrooms
- Extended & Renovated

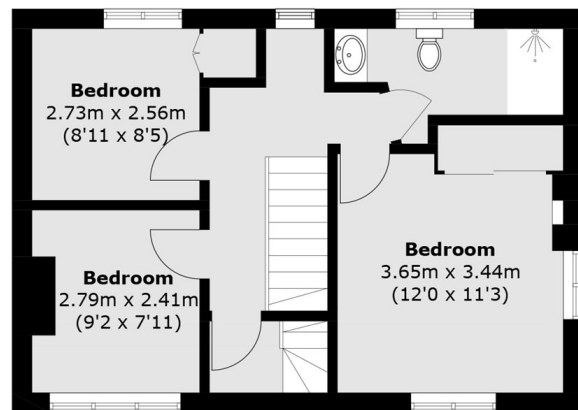
# Yew Tree Road, London, W12



**Ground Floor**



**Second Floor**



**First Floor**

Total area (approx.): 141.1 sq. m (1,518.8 sq. ft)  
(Excluding Eaves)