



Lamplugh Road, Bridlington, YO15 2JU

- Large Maisonette
- Spacious Lounge With Beautiful Sea Views
- Full Of Potential
- Vehicle Access To A Garage Space At The Rear
- Three Bedrooms
- Balcony To The Rear
- Ideal For A Range of Buyers
- Located On Bridlington's Sought-After North Side Sea Front

Asking Price £190,000



The Timbers, Flat 6, 37 Lamplugh Road, , Bridlington, YO15 2JU

DESCRIPTION

A fantastic and rare opportunity to acquire a spacious maisonette situated on Bridlington's highly sought-after North Side sea front, offering beautiful, uninterrupted sea views. This versatile property would suit a wide range of buyers and is full of potential for those looking to create a wonderful coastal home.

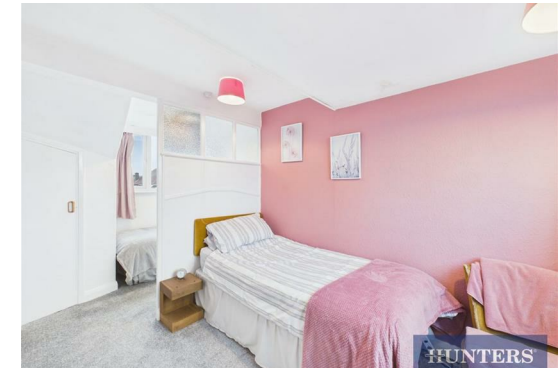
Upon entering the property, you are welcomed into the heart of the home – a generous lounge positioned at the front of the property. The large bay window frames stunning sea views, filling the room with natural light and creating a superb living space. The room is also large enough to comfortably accommodate a family dining table, making it a perfect area for relaxing and entertaining.

Also on this floor is a spacious double bedroom with ample room for furniture and storage. The kitchen offers plenty of storage units and workspace, providing an excellent opportunity for personalisation to suit your own style and needs. Completing this level is a bathroom fitted with a two-piece suite, alongside a separate W/C.

To the upper floor, the property continues to impress with two further generously sized bedrooms and a useful storage room. Externally, to the rear of the property, there is vehicle access to a large garage space, which is shared with five other residents.

This property represents a superb opportunity for buyers looking to put their own stamp on a coastal property. Whether you are searching for a full-time residence, a holiday home, or an investment opportunity, this home offers fantastic potential in a highly desirable location.

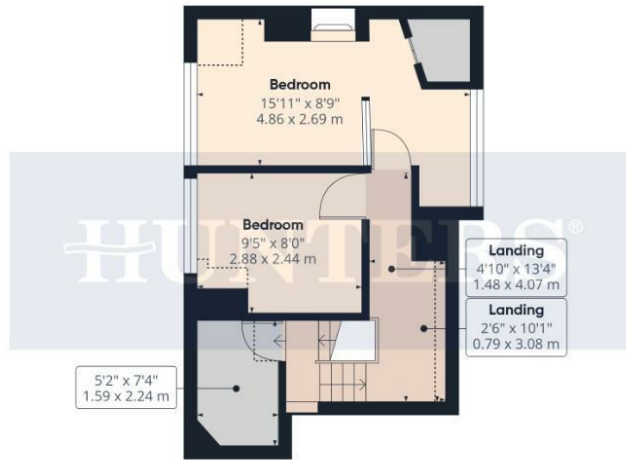
Ideally located within easy reach of Bridlington's harbour, town centre, cafés, shops and transport links. The property also offers convenient access to the beautiful coastal village of Sewerby, perfect for scenic walks, beaches and enjoying the stunning Yorkshire coastline. Schedule a viewing today!







Ground Floor



Floor 1



Viewings

Please contact bridlington@hunters.com, if you wish to arrange a viewing appointment for this property or require further information.

Valuations

For a valuation of your property, please email the team with your property details, contact information and the times you are available.

HUNTERS

Approximate total area⁽¹⁾

908 ft²
84.3 m²

Reduced headroom

48 ft²
4.5 m²

(1) Excluding balconies and terraces

Reduced headroom

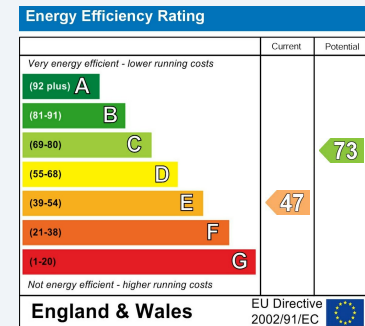
Below 5 ft/1.5 m

Calculations reference the RICS IPMS 3C standard. Measurements are approximate and not to scale. This floor plan is intended for illustration only.

GIRAFFE360

ENERGY PERFORMANCE CERTIFICATE

The energy efficiency rating is a measure of the overall efficacy of a home. The higher the rating the more energy efficient the home is and the lower the fuel bills will be.



These particulars are intended to give a fair and reliable description of the property but no responsibility for any inaccuracy or error can be accepted and do not constitute an offer or contract. We have not tested any services or appliances (including central heating if fitted) referred to in these particulars and the purchasers are advised to satisfy themselves as to the working order and condition. If a property is unoccupied at any time there may be reconnection charges for any switched off/disconnected or drained services or appliances - All measurements are approximate.

THINKING OF SELLING? If you are thinking of selling your home or just curious to discover the value of your property, Hunters would be pleased to provide free, no obligation sales and marketing advice. Even if your home is outside the area covered by our local offices we can arrange a Market Appraisal through our national network of Hunters estate agents.

