



Long Lane

London, SE1

£1,800 pcm

A beautiful one double bedroom apartment with balcony set within modern gated development moments from Bermondsey Street and London Bridge tube.

CHESTERTONS



Long Lane

London, SE1

- ONE BEDROOM
- MODERN BATHROOM
- BALCONY
- FURNISHED



A beautiful one double bedroom apartment with balcony set within modern gated development moments from Bermondsey Street and London Bridge tube. The property offers great, bright space, modern kitchen and bathroom.

Bermondsey is situated on the south bank of the River Thames and is one of the capital's most up and coming areas. Bermondsey is on the Jubilee line making Canary Wharf and West London easily accessible. The area has a weekly antiques market on a Friday and is a short walk to Shad Thames, London Bridge & Bermondsey Street which are home to an array of bars and restaurants.

Tenure: To be advised

Additional tenant charges apply (fees apply to non-AST tenancies only)
 Tenancy Agreement Fee: £300
 References per Tenant/Guarantor: £60
 Inventory check (approx. £100 – £250 inc. VAT)
[chestertons.com/property-to-rent/applicable-fees](https://www.chestertons.com/property-to-rent/applicable-fees)

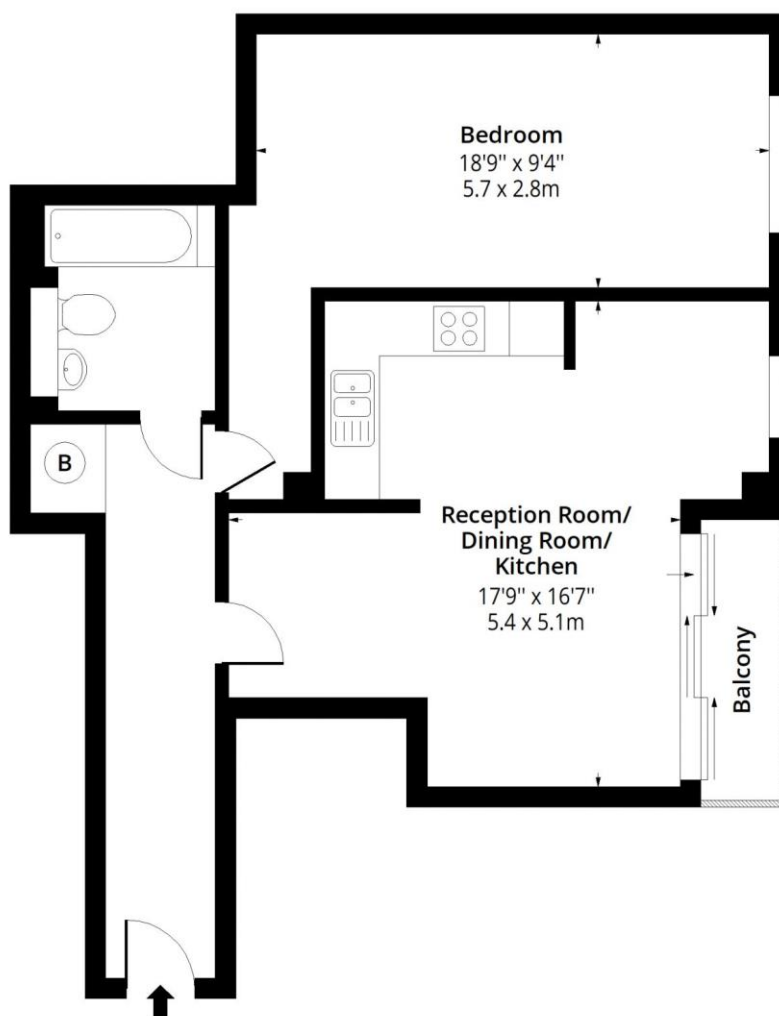
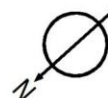
Energy Efficiency Rating		
	Current	Potential
Very energy efficient - lower running costs		
A (94-100)		
B (81-93)		
C (69-80)		
D (55-68)		
E (39-54)		
F (21-38)		
G (1-20)		
Not energy efficient - higher running costs		
	76	87
England, Scotland & Wales EU Directive 2002/91/EC		

Chestertons Tower Bridge Lettings

220 Tower Bridge Road
 Tower Bridge
 London
 SE1 2UP
lettings.towerbridge@chestertons.com
 02073576911
[chestertons.com](https://www.chestertons.com)

Long Lane, London, SE1

Approx. Gross Internal Area 632 Sq Ft - 58.71 Sq M (Excluding Balcony)
Approx. Gross Internal Area 663 Sq Ft - 61.59 Sq M (Including Balcony)



Second Floor

Floor Area 632 Sq Ft - 58.71 Sq M

Floor plan is for illustrative purposes only and is not to scale. Every attempt has been made to ensure the accuracy of the floor plan shown, however all measurements, fixtures, fittings and data shown are an approximate interpretation for illustrative purposes only.

lpaplus.com

