



**Desborough**

Desborough

**£1,150 pcm**

**Deposit:** £1,150

### "Heady Delights"

Fabulous 3 bedroom semi-detached property situated on the popular Grange Estate in Desborough. Large spacious lounge, down stairs cloakroom, kitchen and dining room. Upstairs benefits from 3 good sized bedrooms the master boasting an en-suite shower room, and also a separate family bathroom. Good sized garden to the rear with a single garage and off road parking to the side.

Available June !

**Living Room** - 4.55m x 3.28m (14'11" x 10'9")

**WC** - 1.78m x 0.84m (5'10" x 2'9")

**Kitchen** - 2.59m x 2.06m (8'6" x 6'9")

**Dining Room** - 2.69m x 2.36m (8'10" x 7'9")

**Bedroom 1** - 3.73m x 2.64m (12'3" x 8'8")

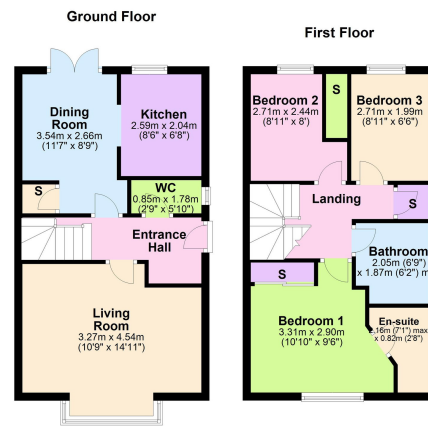
**Ensuite** - 2.13m x 1.45m (7'0" x 4'9")

**Bedroom 2** - 2.69m x 2.46m (8'10" x 8'1")

**Bedroom 3** - 2.69m x 1.98m (8'10" x 6'6")

**Bathroom** - 2.06m x 1.88m (6'9" x 6'2")





Total area: approx. 73.8 sq. metres (794.8 sq. feet)



Henderson Connellan Kettering office 01536 417888 [ketteringsales@hendersonconnellan.co.uk](mailto:ketteringsales@hendersonconnellan.co.uk)

Disclaimer: These particulars do not form part of any offer or contract and should not be relied upon as statements or representations of fact. Any areas, measurements of distances are approximate. The text, photographs and plans are for guidance only and are not necessarily comprehensive.

